



Tsunami Deployer

HPE Content Exporter Guide

**Supports migration of EMC HPE Content Manager into Microsoft
SharePoint using Tsunami Deployer**

Version 4.0
Last Updated: April 30, 2024

Table of Contents

PREFACE	IV
INTENDED AUDIENCE.....	IV
CONVENTIONS	IV
TECHNICAL SUPPORT.....	V
COMMENTS AND SUGGESTIONS	V
1 INSTALLING TZUNAMI HCP EXPORTER	1-6
1.1 SYSTEM REQUIREMENTS.....	1-7
1.2 PERMISSION REQUIREMENTS.....	1-7
1.2.1 Connecting HPE Content Manager Server	1-7
1.3 INSTALLING TZUNAMI HPE CONTENT EXPORTER	1-8
1.4 CONFIGURATION OF TZUNAMI SERVICE SETTINGS.....	1-10
1.5 UNINSTALL TZUNAMI HPE CONTENT EXPORTER	1-11
1.5.1 Uninstallation using Installer	1-11
1.5.2 Uninstallation using Control Panel.....	1-11
2 TZUNAMI HPE CONTENT EXPORTER.....	2-12
2.1 OVERVIEW.....	2-13
2.1.1 Supported Types	2-13
2.1.2 Security	2-13
2.1.3 Configuration for Additional System Metadata Extraction.....	2-13
2.2 EXPORTING FROM HPE CONTENT MANAGER	2-15
2.3 COMMAND-LINE EXPORT.....	2-23
2.4 LOGGING SETTINGS.....	2-25
2.5 BEST PRACTICE	2-25
3 COPYRIGHT AND TRADEMARK.....	3-26

List of Tables

Table 1-1: System Requirements	1-7
Table 2-1: HPE Content Exporter, Welcome screen - Description of fields	2-16
Table 2-2: HPE Content Configurations Screen – Description of Fields	2-17
Table 2-3: HPE Content Configurations Screen, General Tab – Description of Fields	2-17
Table 2-4: HPE Content Configurations, Actions Tab - Description of fields	2-18
Table 2-5 Analyzer Information Description	2-19
Table 2-6: Target Structure Guidelines	2-25

List of Figures

Figure 1-1: Welcome Window	1-8
Figure 1-2: End-User License Agreement Window	1-8
Figure 1-3: Custom Setup Window	1-9
Figure 1-4: Installing Tsunami HPE Content Exporter Window	1-9
Figure 1-5: Installation Complete Window	1-10
Figure 1-6 Deployer Settings Manager	1-10
Figure 2-1 Custom Metadata Configuration	2-14
Figure 2-2 Sample Internal Name and Display Name	2-15
Figure 2-3: HPE Content Exporter Wizard.....	2-16
Figure 2-4: HPE Content Configurations Screen – Connection Tab	2-17
Figure 2-5: HPE Content Configurations Screen – General Tab	2-17
Figure 2-6 HPE Content Configurations Screen – Roots Tab	2-18
Figure 2-7: HPE Content Configurations Screen – Actions Tab.....	2-18
Figure 2-8 Analyze Option.....	2-19
Figure 2-9 Analyzer Information	2-19
Figure 2-10 Analyzer Information	2-19
Figure 2-11 Global ACL Mapping file.....	2-20
Figure 2-12 Folders Screen.....	2-20
Figure 2-13 Filter Screen	2-21
Figure 2-14 Filter Property	2-21
Figure 2-15: Destination Folder Screen	2-22
Figure 2-16: Exporter Progress Screen.....	2-23
Figure 2-17 Log level Settings	2-25

PREFACE

This guide provides installation procedures for **Tsunami HPE Content Exporter** and detail steps to extract contents from **HPE Content Manager** using **Tsunami HPE Content Exporter**. The guide also describes how to extract contents non-interactive way using command-line instructions and best practice.

This preface contains the following topics.

- Intended Audience
- Conventions
- Technical Support
- Comments and Suggestions

INTENDED AUDIENCE

Tsunami HPE Content Exporter Guide is intended for:

- System Administrators who are responsible for exporting HPE Content Manager Contents and setting migration environment using Tsunami Deployer.
- Project Managers and IT Managers who create and regulate usage of **Tsunami Deployer** and **Tsunami HPE Content Exporter**.

CONVENTIONS

The following text conventions are used in this document:

- Commands and keywords are given in **boldface**
- Terminal sessions, console screens, or system file names are displayed in fixed width fonts



Caution indicates that the described action might result in program malfunction or data loss.



Notes contain helpful suggestions about or references to materials not contained in this manual.



Tips provide information that might help you solve a problem.

TECHNICAL SUPPORT

Before contacting Tzunami Support Team, ensure that you are referencing the latest copy of this user guide (Ctrl+Click to follow link) [Tzunami Deployer HPE Content Exporter Guide](#).

For additional information, please contact Tzunami Support Team at support@tzunami.com.

COMMENTS AND SUGGESTIONS

Your feedback is important to us and will help us to provide the most accurate and high quality information possible in our documentation. Send us comments or suggestions by email to support@tzunami.com. Be sure to include as much of the following as possible:

- The document title.
- The location that the document was accessed from (either downloaded from Tzunami web site or the **Tzunami Deployer User Guide** and **Tzunami HPE Content Exporter Guide** available in **Tzunami Deployer**).
- The section or chapter number and the original text found in the document.



When you send information to Tzunami Support Team, you grant Tzunami a right to use or distribute the information internally within Tzunami Development and Support team for diagnostic purpose.

1 INSTALLING TZUNAMI HCP EXPORTER

This chapter contains information about installing **Tsunami HPE Content Exporter**. It contains the following topics:

- *System Requirements*
- *Permission Requirements*
- *Installing Tsunami HPE Content Exporter*
- *Uninstall Tsunami HPE Content Exporter*

1.1 SYSTEM REQUIREMENTS

The following requirements must be met in order to use **Tsunami HPE Content Exporter**:

Table 1-1: System Requirements

Components	Minimum Requirements
Computer and processor	2GHz Pentium processor or equivalent.
Memory	2 GB (Minimum); 4GB (Recommended).
Hard disk	50Mb (additional space will be required for the Tsunami Deployer projects, which may vary from 10 Mb to 4 GB).
Supported Operating System	Windows Server 2003/2008/2012, Windows XP, Windows Vista, Windows 7, Windows 8 & Windows 10.
Supported Architectures	x86 and x64.
Network	Intranet/Internet access depending on connectivity requirements.
Display	800 x 600, 256 colors (minimum); 1024 x 768 high color, 32-bit (recommended)
Microsoft .NET Framework	Microsoft .Net Framework 4.0 or higher
Visual C++ Redistributable Packages	Microsoft Visual C++ Redistributable Packages 64 bit for Visual Studio 2013 Download Visual C++ Redistributable Packages for Visual Studio 2013 from Official Microsoft Download Center

1.2 PERMISSION REQUIREMENTS

1.2.1 Connecting HPE Content Manager Server

For connecting to HPE Content Manager Server using **Tsunami HPE ContentExporter**, you need a user account with the following permissions in the HPE Content Manager:

- A user of Administrator user type.
- Having “Explicit Windows Authentication” enabled.
- It is advised to use the user account having elevated role and permissions as data migration user.



1.3 INSTALLING TZUNAMI HPE CONTENT EXPORTER

Tsunami HPE Content Exporter requires to create necessary directories in the installation location and copies the required files during the installation process. The directory and log files are created in the run time of **Tsunami HPE Content Exporter**.

To install **Tsunami HPE Content Exporter**:

1. Unzip the zip file, and run `TsunamiHPEContentExporter.msi`. The **Tsunami HPE Content Exporter** setup wizard (Welcome window) will launch. To advance through the install wizard, click **Next** on the bottom of the window.

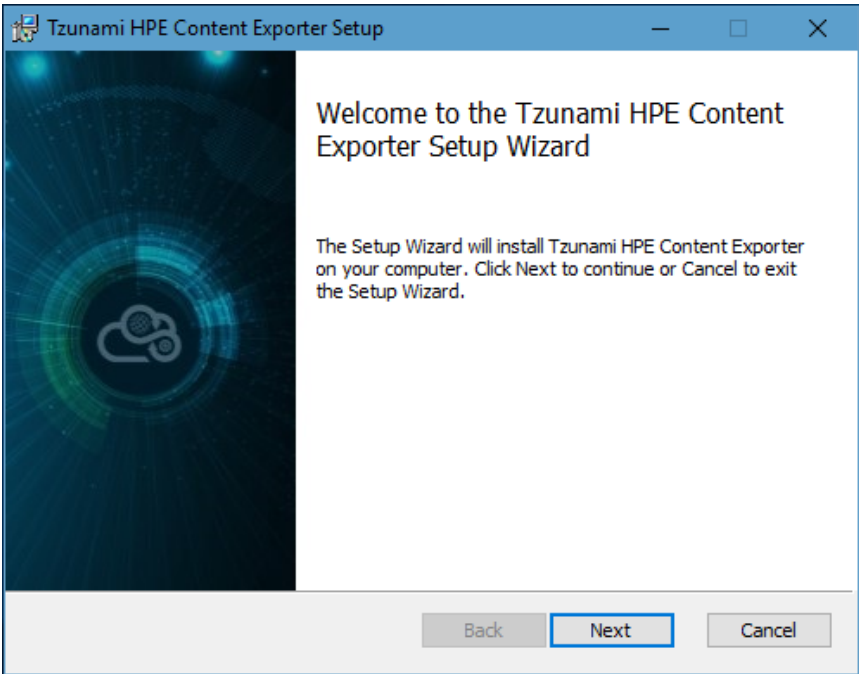


Figure 1-1: Welcome Window

2. In the End-User Licensing Agreement panel, click **"I accept the terms in the License Agreement"** and click **Next** to continue installation.

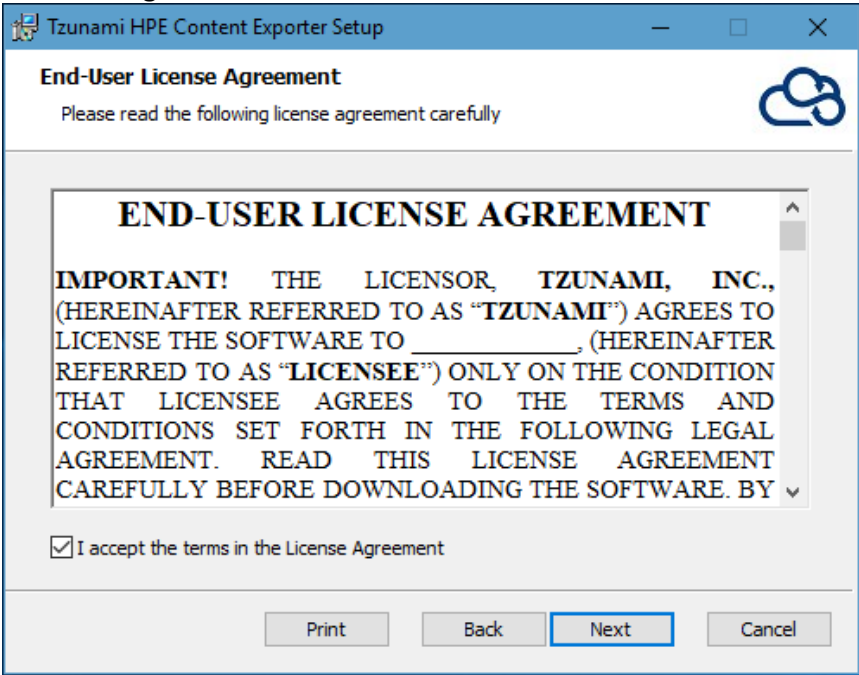


Figure 1-2: End-User License Agreement Window



You are advised to read the terms of the license carefully before proceeding with the installation. If you decline the license terms, the installation cannot proceed.

3. In the Custom Setup panel, do one of the following:
- To accept the default Destination Folder, click **Next**.
 - Click **Browse**, locate and select a destination folder, click **OK**, and then click **Next**.

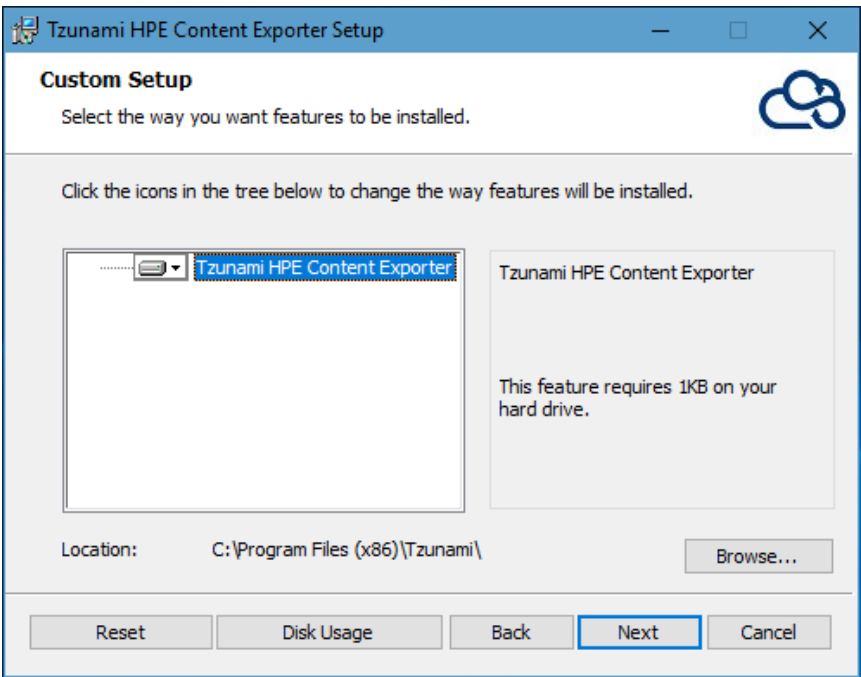


Figure 1-3: Custom Setup Window

4. In the Ready to install Tzunami HPE Content Exporter panel, click **Install**.

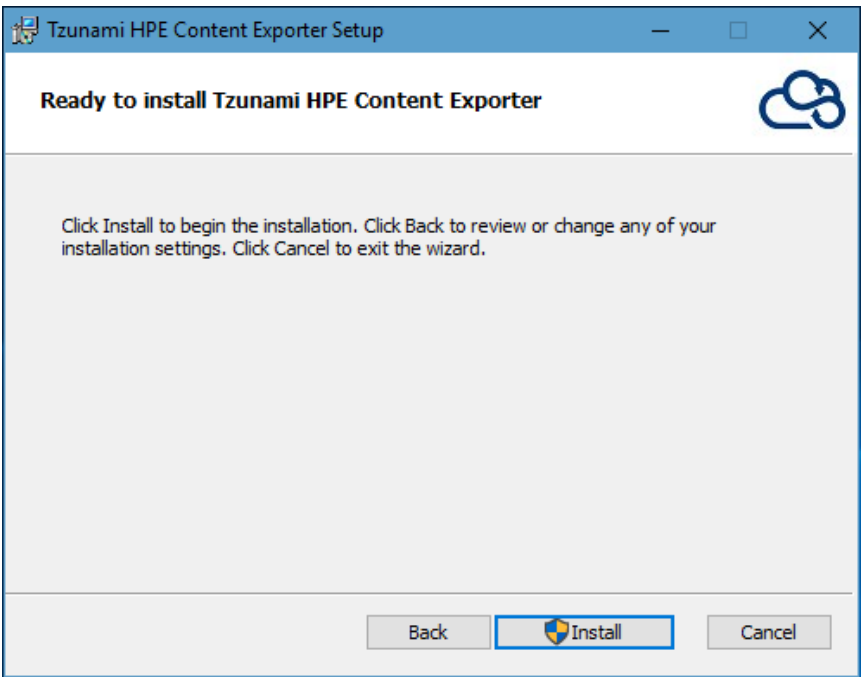


Figure 1-4: Installing Tzunami HPE Content Exporter Window

5. In the Completed Tsunami HPE Content Exporter Setup Wizard, to exit the wizard, click **Finish**.

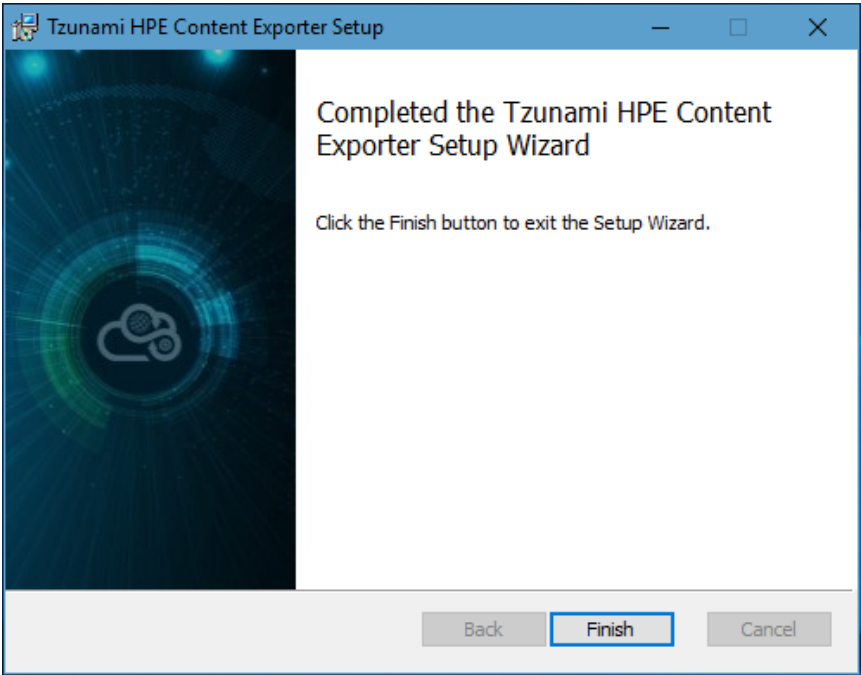


Figure 1-5: Installation Complete Window



When Tsunami HPE Content Exporter is installed, it comes with a default license that can be used for evaluation purpose only. This license is limited in time and number of operations.

1.4 CONFIGURATION OF TZUNAMI SERVICE SETTINGS

1. When installing **Tsunami Deployer/Exporter/Remote Service** for the first time, a **Tsunami Service Settings** dialog is displayed. In **Tsunami Service Settings**, the Licensing Service, Link Resolver Service and O365 AD Service are pointed to localhost (same machine) and port.

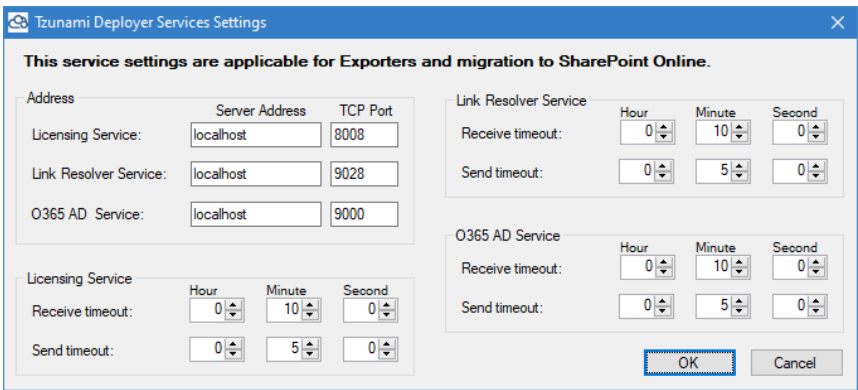


Figure 1-6 Deployer Settings Manager



User can run the **Settings Manager.exe** application from the installation directory to display this service settings dialog at any time and updated the settings to point the Tsunami services as required.

If these services are installed on another machine, point to that machine with machine name or IP Address and port.

Licensing Service: TCP port 8008 (or the port that the Licensing Service is listening on)

Link Resolver Service: TCP port 9028 (or the port that the Link Resolver Service is listening on)

O365 AD Service: TCP port 9000 (or the port that the O365 AD Service is listening on).

2. Click on **OK**.

1.5 UNINSTALL TZUNAMI HPE CONTENT EXPORTER

This section of the guide illustrates different ways to remove or uninstall Tzunami HPE Content Exporter from your Tzunami HPE Content Exporter installed machine. Here are the two different ways to uninstall Tzunami HPE Content Exporters:

- Uninstallation using Installer
- Uninstallation using Control Panel

To uninstall Tzunami HPE Content Exporter, user needs to be a Local Administrator in the HPE Content Exporter installed machine. Uninstalling Tzunami HPE Content Exporter is simple and easy. You can remove or uninstall it in no time. You don't need to reboot your computer once the uninstalling process is complete.



Log files, licensing information files etc. will remain after uninstalling Tzunami HPE Content Exporter. You can manually delete those files from your computer if needed. By default logs are located at the "C:\Program Files\Tsunami\Deployer 4.0\Exporter\Logs", or where Tzunami HPE Content Exporter is installed. Tzunami HPE Content Exporter Options information will be available in "C:\Documents and Settings\All users\Application Data\Local\Tsunami" location.

1.5.1 Uninstallation using Installer

To uninstall Tzunami HPE Content Exporter using Installer

1. Close **Tzunami HPE Content Exporter**.
2. Unzip the zip file, and run TzunamiHPEContentExporter.msi. The Tzunami HPE Content setup wizard (Welcome window) will launch. To advance through the remove installation wizard, click "**Next**" at the bottom of the screen.
3. In the Change, repair or remove installation panel, click "**Remove**" button to proceed to remove Tzunami HPE Content Exporter from your computer.
4. In the Ready to remove Tzunami HPE Content Exporter panel, click "**Remove**" to remove Tzunami HPE Content Exporter from your computer.
5. Click **Finish** to exit the setup wizard.



You can right-click Tzunami HPE Content Exporter setup (TzunamiHPEContentExporter.msi) file and select **Uninstall** to remove or uninstall Tzunami HPE Content Exporter from your computer.

1.5.2 Uninstallation using Control Panel

To uninstall Tzunami HPE Content Exporter using Control Panel

1. Close **Tzunami HPE Content Exporter**.
2. Click **Start > Control Panel > Add or Remove Programs**.
3. In Add or Remove Programs window, right-click the Tzunami HPE Content Exporter application you want to remove, and then click **Uninstall**.

2 TZUNAMI HPE CONTENT EXPORTER

This chapter contains information about Tzunami HPE Content Exporter. It contains the following topics:

- *Overview*
- *Exporting from*
- *Command-line Export*
- *Logging settings*
- *Best Practice*

2.1 OVERVIEW

Tsunami HPE Content Exporter enables migrating HPE Content Manager Content into SharePoint 2007, SharePoint 2010, SharePoint 2013, SharePoint 2016, and SharePoint Online using Tsunami Deployer.

To load HPE Content Manager Content into **Tsunami Deployer**, you must first extract the content, using **Tsunami HPE Content Exporter**, into **TDX** (Tsunami Deployer Export) and **STDx** (Separate Tsunami Deployer Export) files. You can then load this **TDX** file into a Deployer project.



When working with Tsunami Deployer on several machines, you can run an export on one machine and load the exported data on another.

Tsunami HPE Content Exporter is distributed as an external tool from Tsunami Deployer.

2.1.1 Supported Types

The following items are exported from HPE Content Manager:

- Records (Electronic and Non-Electronic Documents, Folder)
- Records versions and revisions
- Locations (Committee, Group, Organization, Person, Position, Venue, Project Team and Workgroup)
- Custom Records (derived from default Document and Folder type only)
- Custom Metadata
- Orphan/Root documents
- Security

2.1.2 Security

In addition to the structure and items, **Tsunami HPE Content Exporter** extracts security information. The following permissions are used in the exporter:

- Browse
- View Document
- View Metadata
- Update Document
- Update Record Metadata
- Modify Record Access
- Destroy Record
- Contribute Contents

Each item is assigned an ACL defining the permissions of the various members according to the roles they were assigned.

2.1.3 Configuration for Additional System Metadata Extraction

The HPE Content system has a lot of system metadata defined. All the system metadata migration may not be relevant for migration purpose. Therefore, **Tsunami HPE Content Exporter** extracts a fixed set of system metadata in default.

If user needs to extract the system metadata which is not included in the fixed set of metadata, then user can configure the information of each metadata to be extracted in a configuration file.

The configuration file is **CustomMetadataConfig.xml** which is located in installation directory (e.g. *C:\Program Files (x86)\Tsunami\Deployer 4.0\Exporters\HPEContent*).

From the installation directory, open the CustomMetadataConfig.xml in any xml editor. In the file, locate the Properties node. Then for each metadata that you want to extract, add a Property node with correct value for id, title and type as depicted in the following figure.

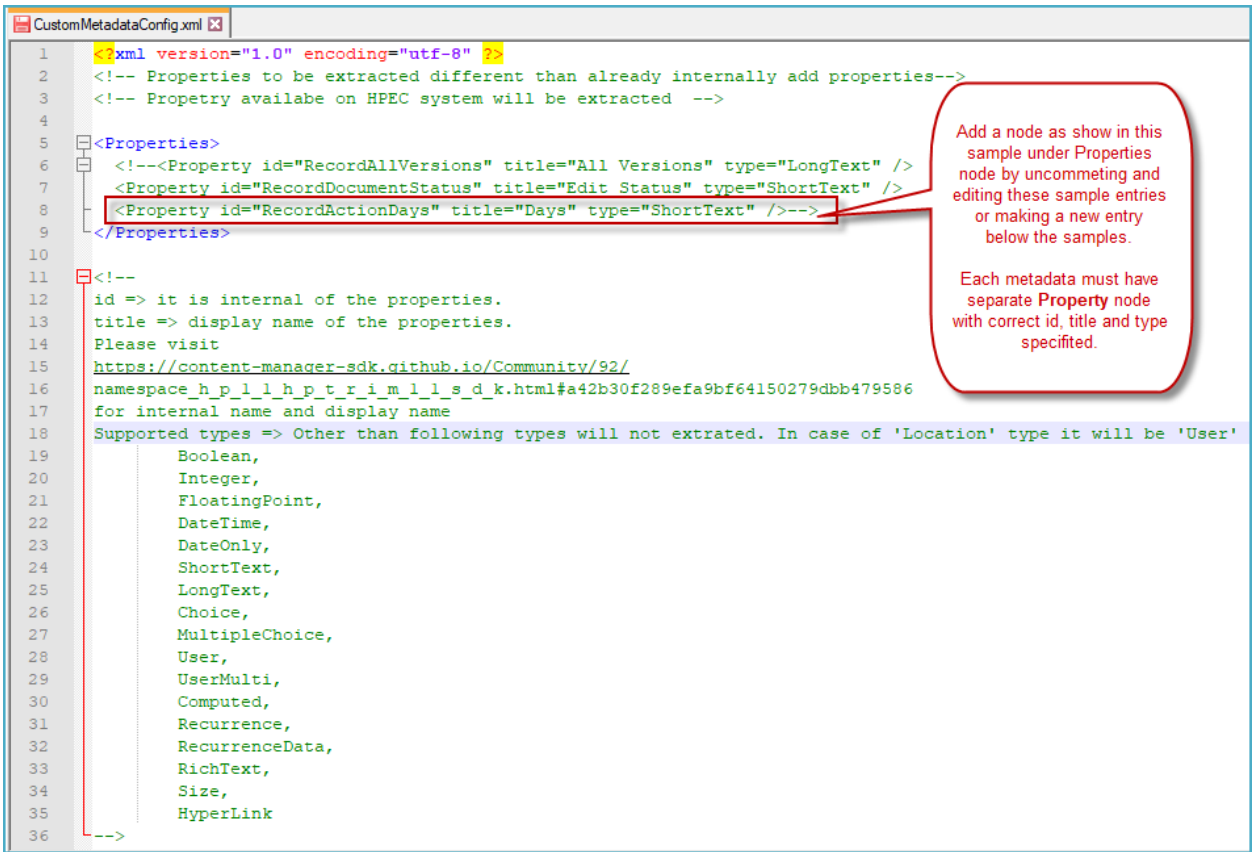


Figure 2-1 Custom Metadata Configuration

For each metadata, user needs to provide the information for following fields:

- id
- title
- type

Where, id => it is internal name of the properties.

title => display name of the properties.

To find the internal name, please visit following link

https://content-manager-sdk.github.io/Community/92/namespace_h_p_1_1_h_p_t_r_i_m_1_1_s_d_k.html#a42b30f289efa9bf64150279dbb479586

From the **Enumerated** list presented, find the internal and display as shown in example:

Hewlett Packard Enterprise

HPE Content Manager SDK 9.2

Main Page

Related Pages

Packages

Classes

Packages

Package Functions

HPE Content Manager SDK 9.2

Welcome to the HPE Content Manager SDK

Supporting Information

Release Notes

Start here

Programming in HPE Content Manager

Search Clauses

Enum Items

Object Purposes

Advanced Topics

Packages

Classes

Class List

HP

HPTRIM

SDK

Class Index

Class Hierarchy

enum HP.HPTRIM.SDK.PropertyIds

The PropertyIds enum

Enumerator	Display Name (title)
Unknown	Unknown
AttachedLabels	Attached Labels
DateLastUpdated	Date Last Updated
LastUpdatedBy	Last Updated By
Uri	Unique Identifier
Url	Web URL
Urn	Uniform Resource Name
ActionDefActionName	Action Name
ActionDefAssignable	Assignable

Figure 2-2 Sample Internal Name and Display Name

The **Tsunami HPE Content Exporter** supports the value for **type** field as below:

- Boolean,
- Integer,
- FloatingPoint,
- DateTime,
- DateOnly,
- ShortText,
- LongText,
- Choice,
- MultipleChoice,
- User,
- UserMulti,
- Computed,
- Recurrence,
- RecurrenceData,
- RichText,
- Size,
- HyperLink

In case of **Location**, the value for **type** field should be **User'**

2.2 EXPORTING FROM HPE CONTENT MANAGER

The **Tsunami HPE Content Exporter** enables you to export HPE Content Manager Content to a **TDX** file.



When exporting, keep the following in mind:

Export in small chunks: When exporting from your source system, perform the export in small chunks of about 40K-50K files each that have a common business logic or some other logic.

Ensure consistency: Make sure that the content of the different exports does not overlap and that, while exporting, no changes are made to the source data.

To export to a TDX file:

1. Run the **Tsunami HPE Content Exporter** from installation location or Start menu.
(e.g. C:\Program Files (x86)\Tsunami\Deployer 4.0\Exporters\HPEContent\TsunamiExporter.exe)
Or
In Tsunami Deployer, **Right-Click** in the HPE Content tab source store area and select **Export HPE Content to TDX**.
The Welcome screen of the Export Wizard appears.

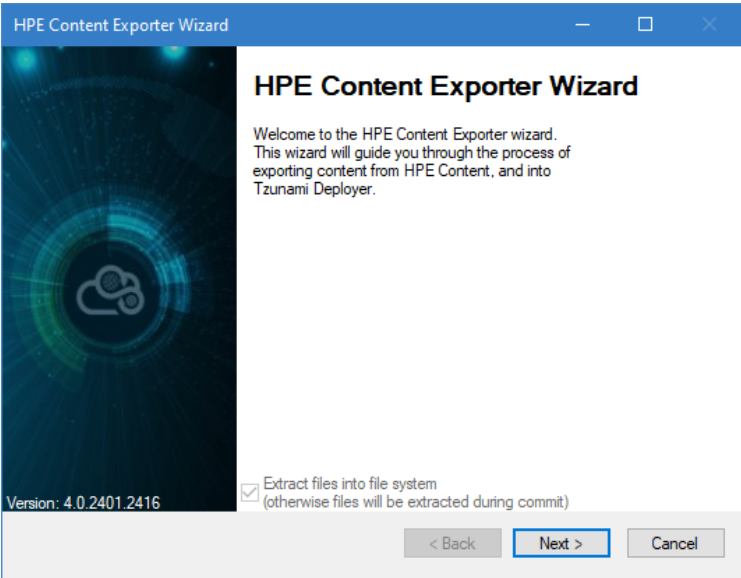


Figure 2-3: HPE Content Exporter Wizard

Table 2-1: HPE Content Exporter, Welcome screen - Description of fields

Fields	Description
Extract files into file system (otherwise files will be extracted during commit)	<div><div>Check this option if you wish to download the binary files from HPE Content Manager server to the file system and store them in the File Store folder, in the same location as the TDX file.</div><div>If this option is unchecked, no files are downloaded at the export stage. The files are only downloaded when they are needed, in the commit stage.</div><div><div></div><div><ul style="list-style-type: none">To download files from HPE Content Manager Server during commit stage, you must install Tsunami HPE Content Exporter on the Tsunami Deployer installed machine.</div></div></div>

2. Click **Next**. The HPE Content Configurations screen appears with three tabs: Connection, General, Roots and Actions.
3. Click the **Connection** tab and enter the information required for the exporter to connect to HPE Content Manager.

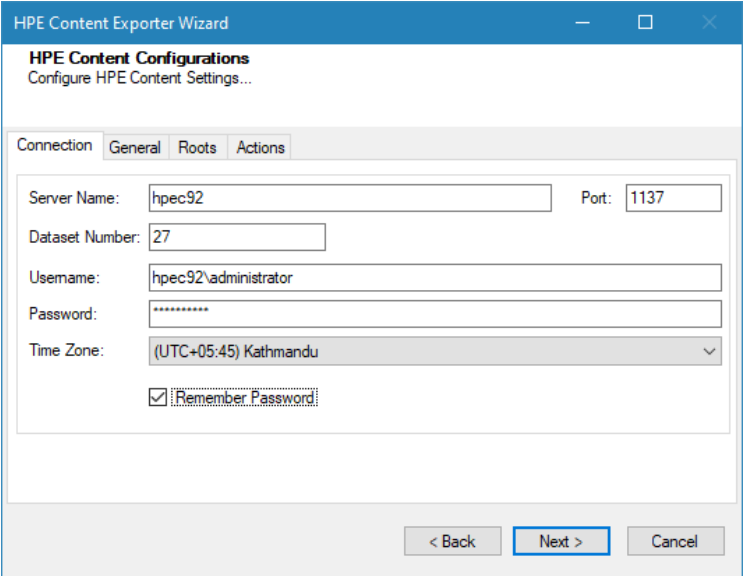


Figure 2-4: HPE Content Configurations Screen – Connection Tab

Table 2-2: HPE Content Configurations Screen – Description of Fields

Field	Description
Server Name	Enter the HPE Content Manager Server name.
Port	Enter the HPE Content Manager Server port number.
Dataset Number	Enter the HPE Content Manager Server dataset number.
Username	Enter the username to use when connecting to the Namespace.
Password	Enter the password to use when connecting to the Namespace.
Time Zone	Select the time zone of HPE Content Manager Server.
Remember Password	Check to remember login credential for next time.

4. Click the **General** tab and enter general export information.

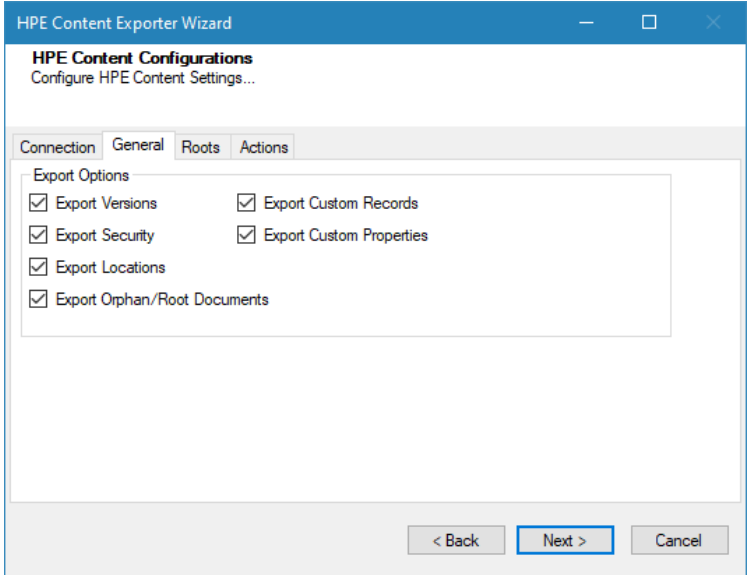



Figure 2-5: HPE Content Configurations Screen – General Tab

Table 2-3: HPE Content Configurations Screen, General Tab – Description of Fields

Field	Description
Export versions	Check this option if you wish to export all versions of records.  Uncheck this option, if you wish to export current versions of each item.
Export Security	Check this option if you wish to export the security permissions.
Export Locations	Check this option if you wish to export the Locations as Group and Users.
Export Orphan/Root Documents	Check this option if you wish to export the records residing into the root location of the server (having no parent location).
Export Custom Records	Check this option if you wish to export the user defined records. Custom records derived only from default document and folder types are supported.

Field	Description
Export Custom Properties	Check this option if you wish to export the user defined metadata.

5. Click the **Roots** tab and enter unique record number per line.

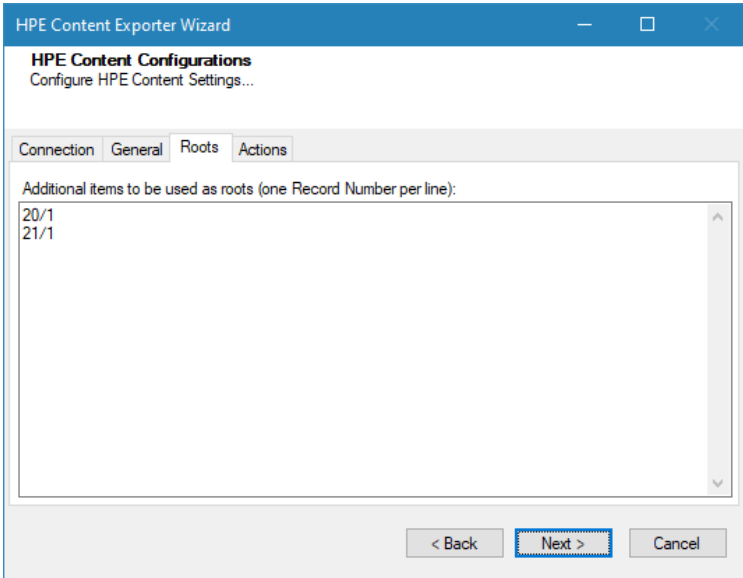


Figure 2-6 HPE Content Configurations Screen – Roots Tab

It is an optional option and the records appears under main root in hierarchy in next screen.

6. Click on Actions tab.

The **Actions** tab allows you to use different actions that can be taken in the exporter.

- Auto Pause:** The export process is paused and resumed using this functionality at a set time each day. The feature can be turned on or off using the **Use Auto Pause** check box. The feature can be checked by the user, who can also select the pause and resume times. The user can deselect it to turn off the feature.

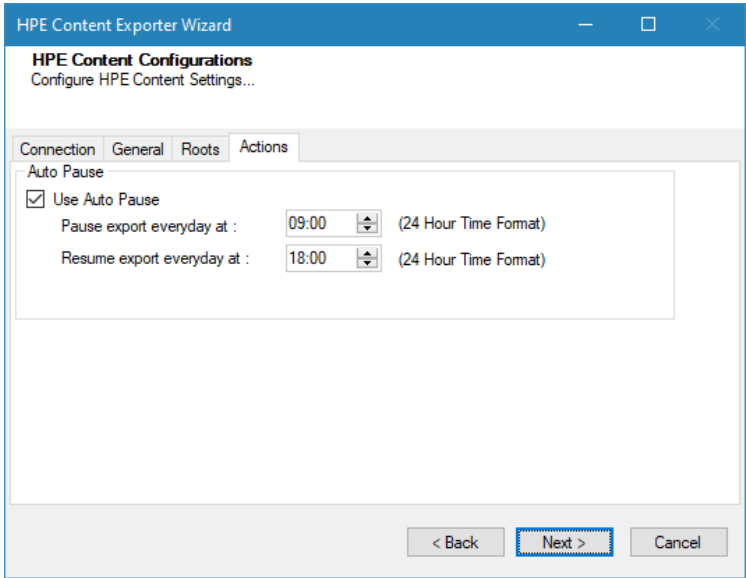


Figure 2-7: HPE Content Configurations Screen – Actions Tab

Table 2-4: HPE Content Configurations, Actions Tab - Description of fields

Field	Description
Auto Pause	
Use Auto Pause	To use the auto-pause and resume feature, select this option. To turn off this function, uncheck this box.
Pause export every day at	Set the daily time that the export process should pause.

Field	Description
Resume export every day at	Set the daily time for restarting the interrupted export operation.

The settings for actions are only applied to this exporter instance that is currently executing when the user clicks the **Next** button.

7. Click **Next**. The Folders screen appears.

Tsunami Exporter provides quick analysis option before exporting to know the size, count of contents inside selected folder.

If you want to analyze the content: Check on the Folder(s) in tree view, then **Analyze** button is enabled. Click **Analyze**.

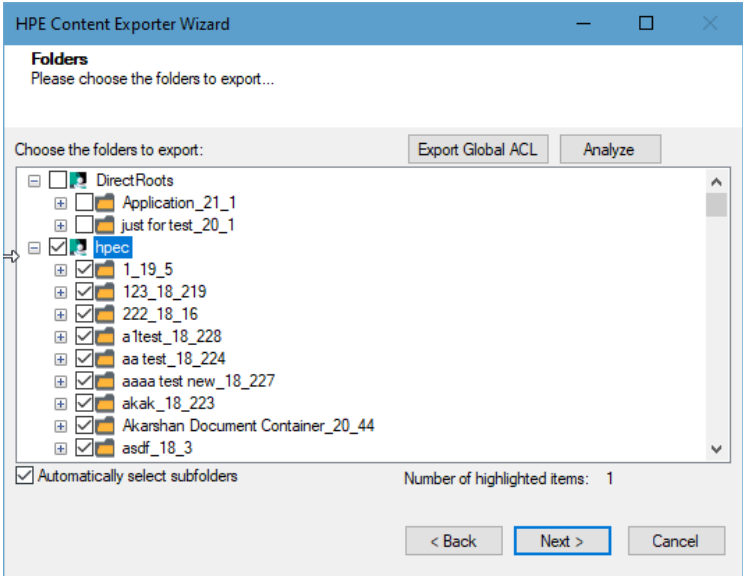


Figure 2-8 Analyze Option

Analyzer screen appears. Analyzer screen provides the detail information that helps to plan for the export (chunk size) based on File size and number of items.

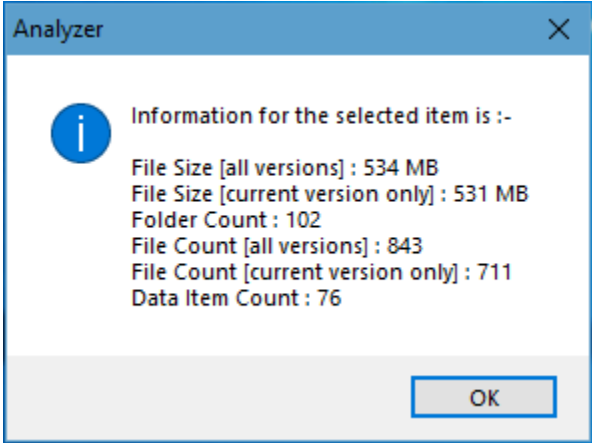


Figure 2-9 Analyzer Information

Figure 2-10 Analyzer Information

Table 2-5 Analyzer Information Description

Field	Description
File Size [all versions]	Provides the total size of files for all versions of documents.
File Size [current version only]	Provides the total size of files for current version of documents.
Folder Count	Provides the number of folders.

Field	Description
File Count [all versions]	Provides the total number of files for all versions of documents.
File Count [current version only]	Provides the total number of files for current versions of documents.
Data Item Count	Provides the total number of data item.

You can export the Roles, Groups and Users in a file by clicking on **Export Global ACL** button. A progress bar appears while exporting the information. The file is by default exports to:
Location: C:\ProgramData\Tsunami\GlobalAclexport\HPEContent
File Name: global_acl.xml
 This file is used in **Tsunami Deployer** when using Global ACL Mapping. Refer **Deployer User Guide’s** section **Global ACL Mapping** for more details.

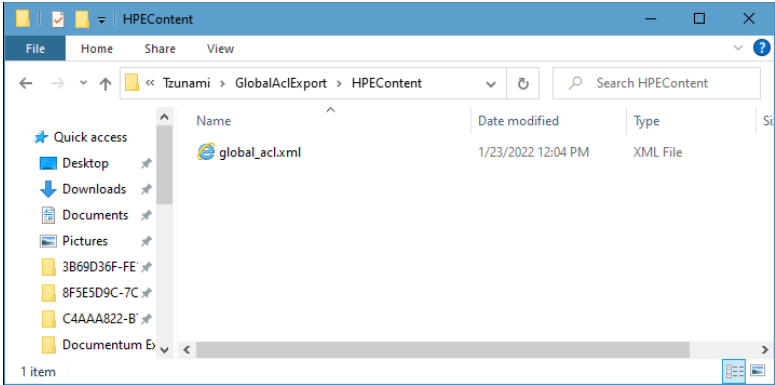


Figure 2-11 Global ACL Mapping file

8. Select the folder(s) to export.

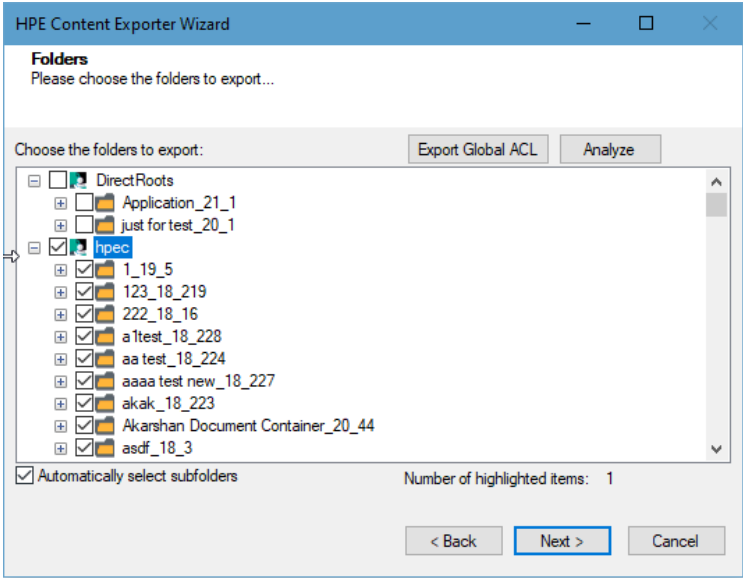


Figure 2-12 Folders Screen



You can select all subfolders of a selected folder by checking Automatically select subfolders.
 The folder and sub-folder with their ID are displayed in Tree View.

9. Click **Next**. The Filter screen appears.

HPE Content Exporter Wizard

Filter

Please set a filter...

Properties:

Author
Date Created
Editor
ID
Last Action Date
Name

Condition:

Author

Equals to

Add Condition

Clear Condition

Filter:

☐ Apply OR Condition

Clear All

< Back

Next >


Cancel

Figure 2-13 Filter Screen

10. Set up filtering as follows:
- a. In the Properties field, select a property.

b. In the Condition field, select a condition from the dropdown list and enter or select values in the corresponding field.

c. Click **Add Condition**. The condition is added to the Filter area, displaying the full filter expression.

 You can only add one condition per property.

You can edit a condition for a property by selecting the property and modifying the condition type or values that are currently assigned to it.

You can remove a condition from a property or all the conditions from all the properties by clicking **Clear Condition** or **Clear All**, respectively.

For example, if 'Date Created' property is applied in filter, the item(s) will be filtered based on the valid condition(s) from 'Date Created' property.

HPE Content Exporter Wizard

Filter

Please set a filter...

Properties:

Author
Date Created
Editor
ID
Last Action Date
Name

Condition:

Date Created

Between

29/Jun /2018 2:24:00 PM

For example, the values 4 and 9 will return items with the values 5, 6, 7 and 8.

29/Jun /2018 2:24:00 PM

Add Condition

Clear Condition

Filter:

☐ Apply OR Condition

Date Created between '1/May/2018 02:24:00 PM' and '15/Jun/2018 02:24:00 PM'

Clear All

< Back

Next >

Cancel

Figure 2-14 Filter Property

11. Click **Next**. The Destination Folder screen appears.

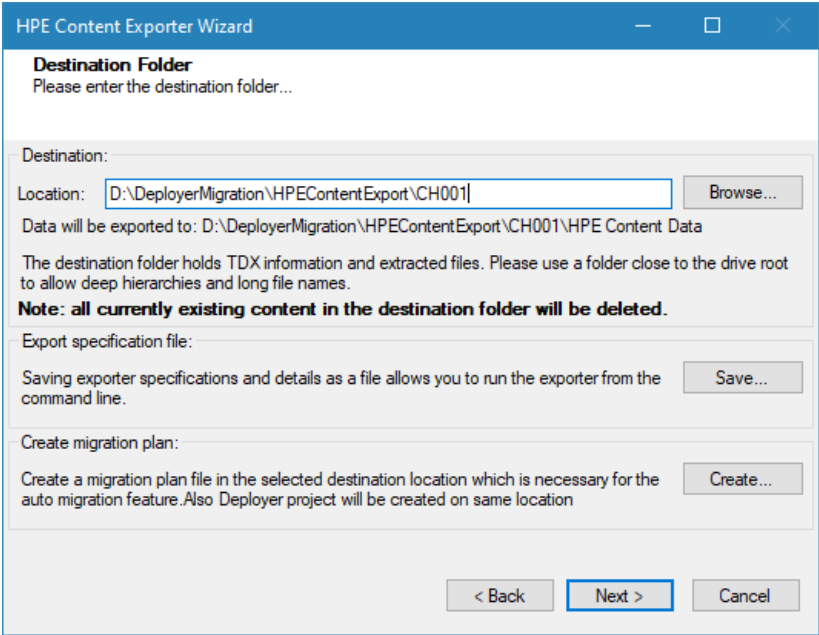



Figure 2-15: Destination Folder Screen

Specify where to export the files and generated **TDX** information. Make sure you are saving to a folder with a descriptive name and under a well-organized file system hierarchy. It is recommended to export to a folder that is as close to the root as possible.


 When exporting deep hierarchy, the property which store the path for exported folder/files may exceed the maximum character supported by the property (typically 260 characters defined in the Windows API). To overcome such condition, it is recommended to export to a folder that is as close to the root as possible.

Starting in Windows 10, version 1607, MAX_PATH limitations have been removed from common Win32 file and directory functions. Please, refer information published by Microsoft from following link and consult with your system administrator to remove the limitation whenever possible.

<https://docs.microsoft.com/en-us/windows/win32/fileio/maximum-file-path-limitation?tabs=registry>

Click **Save** under **Export specification file** for saving export specification details as an XML file which can be used to run the exporter in command-line mode. See the section ‘**Command-line Export**’ below for more details.

12. Click **Next**.

 If the export folder already exists, a warning appears, informing you that the destination folder already exists and if you continue all existing information will be deleted.

Clicking **OK** confirms overwrite and clicking **Cancel** returns you to the Destination Folder screen to change the destination folder.

An Exporting screen appears with a progress bar and execution report, and the export process begins. During the export process, a **Pause** button is displayed. Users can manually pause and resume the export process (despite of scheduled pause/resume time) by clicking on **Pause/Resume** button.

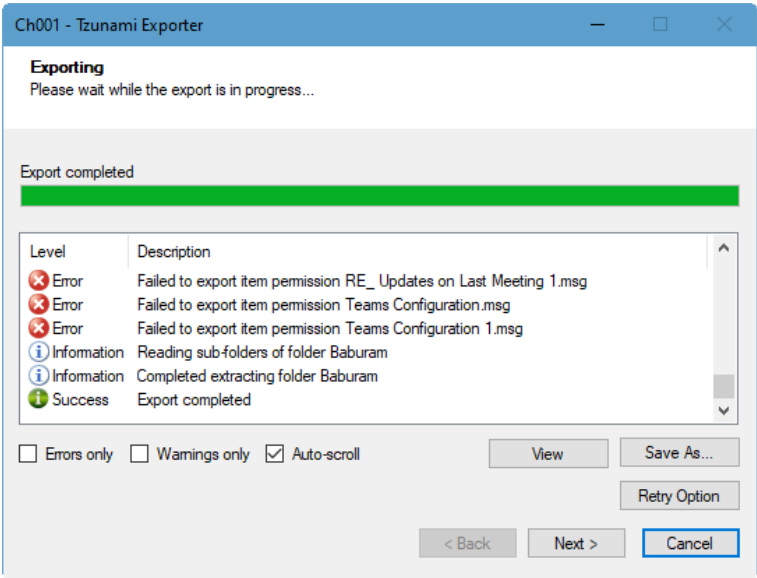


Figure 2-16: Exporter Progress Screen



- You can save the export report by clicking **Save As...** after the export is complete.
- You can check **Auto-scroll** to display the latest progress messages, as they appear.
- You can display only export errors by checking **Errors only**.
- You can display only export warnings by checking **Warnings only**.

- Click **Retry Option**, if there are failed item(s).
- Click **Next**. The Export Complete screen appears.
- Click **Done**. The Tsunami HPE Content Export wizard is closed.

If the exporter was run from Tsunami Deployer, after the extraction process completes successfully, you are prompted to load the exported data into the current Tsunami Deployer project. Clicking ‘Yes’ begins the process of loading the content from the previously exported **TDX** file into the project. For more information about loading sources, refer to the [Tsunami Deployer User Guide](#).

2.3 COMMAND-LINE EXPORT

Tsunami HPE Content Exporter provides ability to run export sessions non-interactively using command line instructions. This allows administrators to plan and schedule long running migration jobs through scripts, batch files and schedulers according to needs and organizational timetables. To run the exporter in batch mode you will need exporter specification file explained in the ‘The Destination Folder screen appears’ step (**Ctrl + Error!** Reference source not found.of the export wizard. The file contains all the export option details including:

- Source ECM connectivity information (Server Address, User Name, Password etc.)
- Items to export
- Destination and Log Folder
- Filter
- Exporter specific options

This file can be edited to suit your needs, however the XML schema of the file should not be altered. It is recommended that you generate a sample specifications file in the Destination Folder Screen selection step of the export wizard and use it as a template to create your own specification file.

Once the specification file is ready, you can run the exporter from command line using command:

TsunamiExporter.exe [-r <ResultFile>] -s <ExportSpecificationsFile>

Usage

Field	Description
-r	Outputs export results into an XML file [Optional]
-s	XML file containing export specifications

For example:

```
C:\User\Administrator> "C:\Program Files (x86)\Tsunami\Deployer
4.0\Exporters\HPEContent\TsunamiExporter.exe" -s "D:\Spec Files\specs1.xml"
```

```
C:\Program Files (x86)\Tsunami\Deployer 4.0\Exporters\HPEContent> TsunamiExporter.exe -s
"D:\Spec Files\specs1.xml"
```

Based on your needs you can create number of specification files and use them to run multiple export sessions as batch commands.



You will need to provide absolute path for **TsunamiExporter.exe** and **ExportSpecificationsFile** in the command if you are not running from the exporter installation directory.

To export contents with elevated or administrative privileges, you can run the exporter from command line using command:

RUNAS /trustlevel: "Unrestricted" "<ExporterInstallationDirectory>\TsunamiExporter.exe" -s "<Spec file path>\Specfilename.xml" "

For example:

```
C:\> RUNAS /trustlevel:"Unrestricted" "C:\Program Files (x86)\Tsunami\Deployer
4.0\Exporters\HPEContent\TsunamiExporter.exe " -s "D:\Spec Files\specs1.xml"
```


2.4 LOGGING SETTINGS

In Tsunami Exporter, log is written in a persistent medium having as much information as possible about events that occur while the software runs. That information plays a vital role while diagnosing if any issue occurs during the export process. Hence, it is worth mentioning that logger writes each and very details during.

Tsunami Inc provides the settings for writing logs. There are the following log levels that the user can change before running the tool.

1. Go to installation directory of the exporter and open **TsunamiExporter.exe.config** file in an editor.
2. Locate the key and set corresponding values as mentioned below:
 - **LogLevel:** Set the esteem to “Debug” or “High” or “Normal” or “low” or “none”.

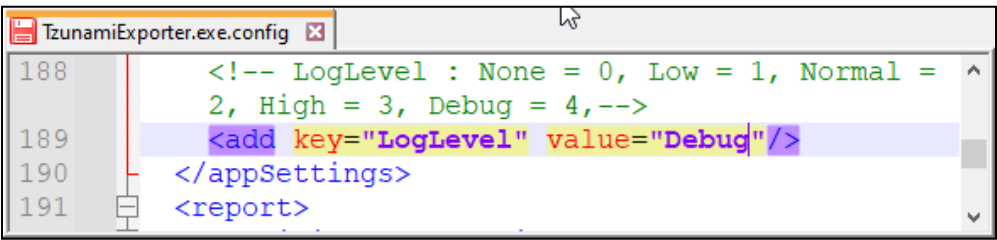


Figure 2-17 Log level Settings

- **Debug:** Writes logs as much as possible. So, this setting includes the maximum level of verbosity. By default, the tool is packaged with this setting.
 - **High:** Writes logs as much as possible for warnings and errors. However, it will not log possible diagnostic information.
 - **Normal:** Writes logs for anticipated errors and warnings.
 - **Low:** Critical errors are logged. There will be as low as possible information logged.
 - **None:** No such logs are written.
3. Save the file. Then run the exporter.

2.5 BEST PRACTICE

Due to the technological differences between HPE Content Manager and SharePoint, the following best practices should be taken into consideration:

- Follow the guidelines below when choosing the target structure.

Table 2-6: Target Structure Guidelines

HCP Item Type	Relevant SharePoint Types
Record (Folder type)	<ul style="list-style-type: none">• Document Library
Location	<ul style="list-style-type: none">• Custom List
Electronic Document	<ul style="list-style-type: none">• Document
Non Electronic Document	<ul style="list-style-type: none">• Data Item

3 COPYRIGHT AND TRADEMARK

© Copyright 2024. Tsunami Inc. All rights reserved.

All intellectual property rights in this publication are owned by Tsunami, Inc. and protected by United States copyright laws, other applicable copyright laws and international treaty provisions. Tsunami, Inc. retains all rights not expressly granted. No part of this publication may be reproduced in any form whatsoever or used to make any derivative work without prior written approval by Tsunami, Inc.

No representation of warranties for fitness for any purpose other than what is specifically stated in this guide is made either by Tsunami, Inc. or by its agents.

Tsunami, Inc. reserves the right to revise this publication, and/or make improvements or changes in the product(s) and/or the program(s) described in this documentation at any time without prior notice.

Any software on removable media described in this publication is furnished under a license agreement included with the product as a separate document. If you are unable to locate a copy, please contact Tsunami, Inc. and a copy will be forwarded to you.

Tsunami is either a registered trademark or a trademark of Tsunami, Inc. in the United States and/or other countries.

All other brand or product names are trademarks or registered trademarks of their respective companies.

For further information, you can contact Tsunami Inc. at:

Tsunami Inc.

601 108th Avenue, NE

Suite 1900

Bellevue, WA 98004, USA

Email: sales@tsunami.com, support@tsunami.com

Web: <http://www.tsunami.com>