



Tsunami Deployer HCP Exporter Guide

Supports migration of EMC HCP content repositories into Microsoft SharePoint using Tsunami Deployer

Version 4.0
Last Updated: January 25, 2024

Table of Contents

PREFACE	IV
INTENDED AUDIENCE.....	IV
CONVENTIONS	IV
TECHNICAL SUPPORT.....	V
COMMENTS AND SUGGESTIONS	V
1 INSTALLING TZUNAMI HCP EXPORTER	1-1
1.1 SYSTEM REQUIREMENTS.....	1-2
1.2 PERMISSION REQUIREMENTS.....	1-2
1.2.1 Connecting HCP Server	1-2
1.3 INSTALLING TZUNAMI HCP EXPORTER.....	1-3
1.4 CONFIGURATION OF TZUNAMI SERVICE SETTINGS.....	1-5
1.5 UNINSTALL TZUNAMI HCP EXPORTER.....	1-6
1.5.1 Uninstallation using Installer	1-6
1.5.2 Uninstallation using Control Panel.....	1-6
2 TZUNAMI HCP EXPORTER.....	2-7
2.1 OVERVIEW.....	2-8
2.1.1 Supported Types	2-8
2.1.2 Security	2-8
2.2 EXPORTING FROM HCP	2-9
2.3 COMMAND-LINE EXPORT.....	2-16
2.4 LOGGING SETTINGS.....	2-17
2.5 BEST PRACTICE	2-17
3 COPYRIGHT AND TRADEMARK.....	3-18

List of Tables

Table 1-1: System Requirements	1-2
Table 2-1: HCP Exporter, Welcome screen - Description of fields.....	2-9
Table 2-2: HCP Configurations Screen – Description of Fields.....	2-10
Table 2-3: HCP Configurations Screen, General Tab – Description of Fields	2-11
Table 2-4: HCP Configurations, Actions Tab - Description of fields	2-11
Table 2-5: Target Structure Guidelines	2-17

List of Figures

Figure 1-1: Welcome Window	1-3
Figure 1-2: End-User License Agreement Window	1-3
Figure 1-3: Custom Setup Window	1-4
Figure 1-4: Installing Tzunami HCP Exporter Window	1-4
Figure 1-5: Installation Complete Window	1-5
Figure 1-6 Deployer Settings Manager	1-5
Figure 2-1: HCP Exporter Wizard	2-9
Figure 2-2: HCP Configurations Screen – Connection Tab	2-10
Figure 2-3: HCP Configurations Screen – General Tab.....	2-10
Figure 2-4: HCP Configurations Screen – Actions Tab	2-11
Figure 2-5 Folders Screen.....	2-12
Figure 2-6 Analyzer Information	2-12
Figure 2-7 Filter Screen	2-12
Figure 2-8 Filter Property.....	2-13
Figure 2-9: Destination Folder Screen	2-14
Figure 2-10: Exporter Progress Screen.....	2-15
Figure 2-11 Log level Settings	2-17

PREFACE

This guide provides installation procedures for **Tsunami HCP Exporter** and detail steps to extract contents from HCP using Tsunami HCP Exporter. The guide also describes how to extract contents non-interactive way using command-line instructions and best practice.

This preface contains the following topics.

- Intended Audience
- Conventions
- Technical Support
- Comments and Suggestions

INTENDED AUDIENCE

Tsunami HCP Exporter Guide is intended for:

- System Administrators who are responsible for exporting HCP contents and setting migration environment using Tsunami Deployer.
- Project Managers and IT Managers who create and regulate usage of **Tsunami Deployer** and **Tsunami HCP Exporter**.

CONVENTIONS

The following text conventions are used in this document:

- Commands and keywords are given in **boldface**
- Terminal sessions, console screens, or system file names are displayed in fixed width fonts



Caution indicates that the described action might result in program malfunction or data loss.



Notes contain helpful suggestions about or references to materials not contained in this manual.



Tips provide information that might help you solve a problem.

TECHNICAL SUPPORT

Before contacting Tzunami Support Team, ensure that you are referencing the latest copy of this user guide (Ctrl+Click to follow link) [Tzunami Deployer HCP Exporter Guide](#).

For additional information, please contact Tzunami Support Team at support@tzunami.com.

COMMENTS AND SUGGESTIONS

Your feedback is important to us and will help us to provide the most accurate and high quality information possible in our documentation. Send us comments or suggestions by email to support@tzunami.com. Be sure to include as much of the following as possible:

- The document title.
- The location that the document was accessed from (either downloaded from Tzunami web site or the **Tzunami Deployer User Guide** and **Tzunami HCP Exporter Guide** available in **Tzunami Deployer**).
- The section or chapter number and the original text found in the document.



When you send information to Tzunami Deployer, you grant Tzunami a non-exclusive right to use or distribute the information in any way it believes appropriate without incurring any obligation to you.

1 INSTALLING TZUNAMI HCP EXPORTER

This chapter contains information about installing **Tsunami HCP Exporter**. It contains the following topics:

- *System Requirements*
- *Permission Requirements*
- *Installing Tsunami HCP Exporter*
- *Uninstall Tsunami HCP Exporter*

1.1 SYSTEM REQUIREMENTS

The following requirements must be met in order to use Tsunami HCP Exporter:

Table 1-1: System Requirements

Components	Minimum Requirements
Computer and processor	2GHz Pentium processor or equivalent.
Memory	2 GB (Minimum); 4GB (Recommended).
Hard disk	50Mb (additional space will be required for the Tsunami Deployer projects, which may vary from 10 Mb to 4 GB).
Supported Operating System	Windows Server 2003/2008/2012, Windows XP, Windows Vista, Windows 7, Windows 8 & Windows 10.
Supported Architectures	x86 and x64.
Network	Intranet/Internet access depending on connectivity requirements.
Display	800 x 600, 256 colors (minimum); 1024 x 768 high color, 32-bit (recommended)
Microsoft .NET Framework	Microsoft .Net Framework 4.0

1.2 PERMISSION REQUIREMENTS

1.2.1 Connecting HCP Server

Tsunami HCP Exporter uses the **REST API** for connecting to HCP server. You need a user account with the following setting/permissions in the HCP Server namespace:

- In Protocol setting, **Enable REST API** should be selected.
- User account should have at least **Read** Data Access Privilege in the Namespace.
- User account should have at least **Read** and **Read ACL** Data Access Privileges in the Namespace to export security (ACL) as well.



- It is advised to use the user account having elevated role and permissions as data migration user.

1.3 INSTALLING TZUNAMI HCP EXPORTER

Tsunami HCP Exporter requires to create necessary directories in the installation location and copies the required files during the installation process. The directory and log files are created in the run time of **Tsunami HCP Exporter**.

To install Tsunami HCP Exporter:

1. Unzip the zip file, and run TsunamiHCPExporter.msi. The Tsunami HCP Exporter setup wizard (Welcome window) will launch. To advance through the install wizard, click **Next** on the bottom of the window.

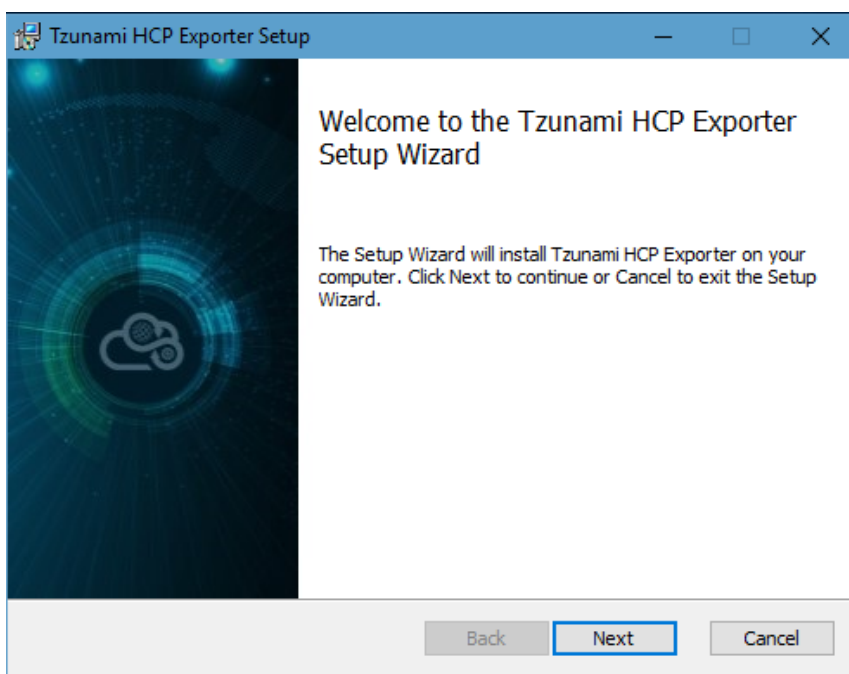


Figure 1-1: Welcome Window

2. In the End-User Licensing Agreement panel, click **"I accept the terms in the License Agreement"** and click **Next** to continue installation.

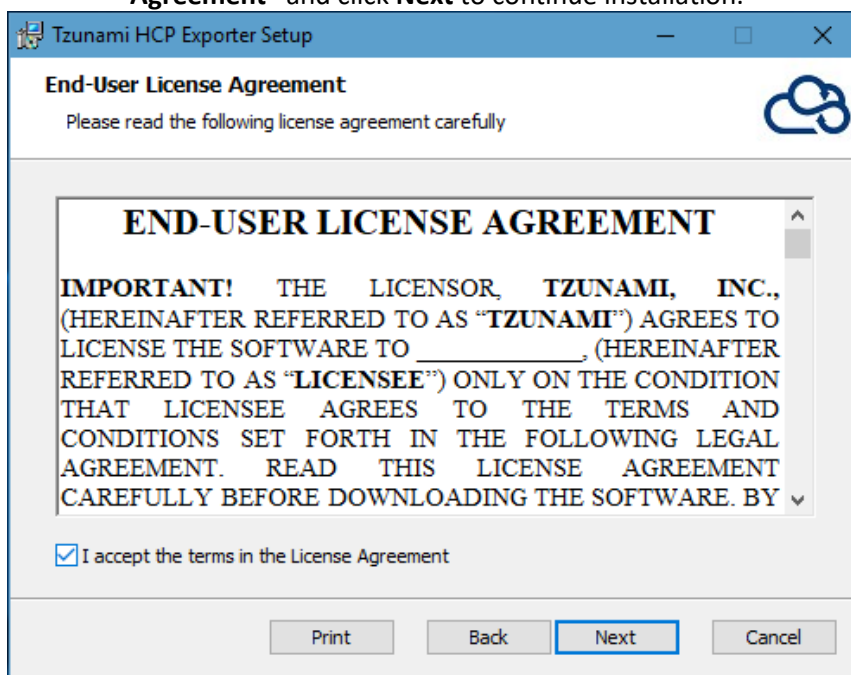


Figure 1-2: End-User License Agreement Window



You are advised to read the terms of the license carefully before proceeding with the installation. If you decline the license terms, the installation cannot proceed.

- In the Custom Setup panel, do one of the following:
 - To accept the default Destination Folder, click **Next**.
 - Click **Browse**, locate and select a destination folder, click **OK**, and then click **Next**.

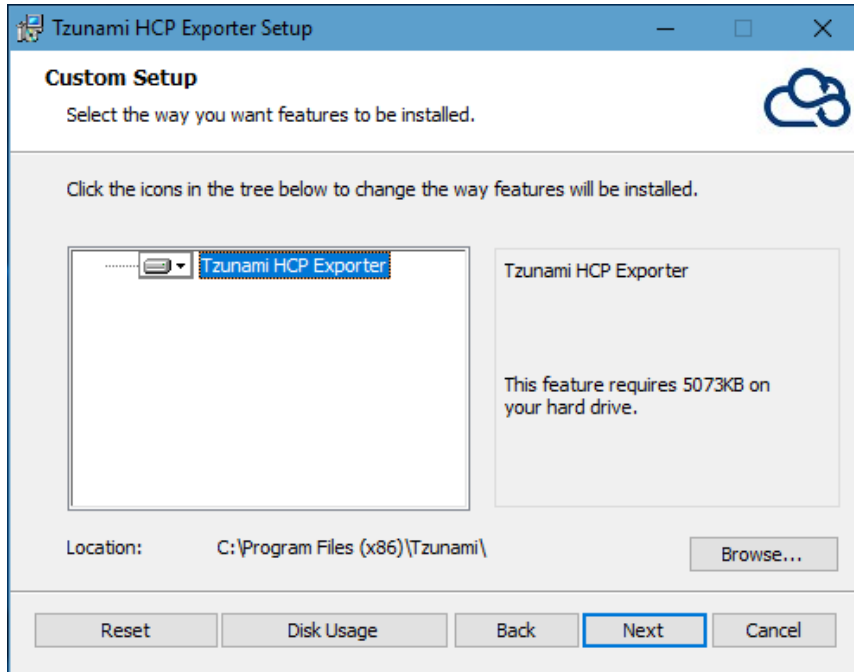


Figure 1-3: Custom Setup Window

- In the Ready to install Tsunami HCP Exporter panel, click **Install**.

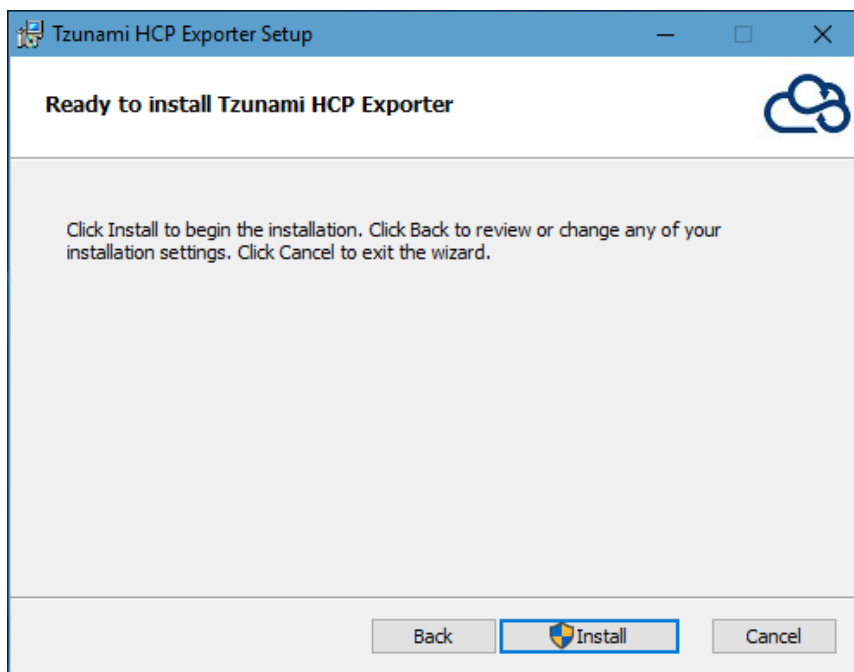


Figure 1-4: Installing Tsunami HCP Exporter Window

5. In the Completed Tzunami HCP Exporter Setup Wizard, to exit the wizard, click **Finish**.

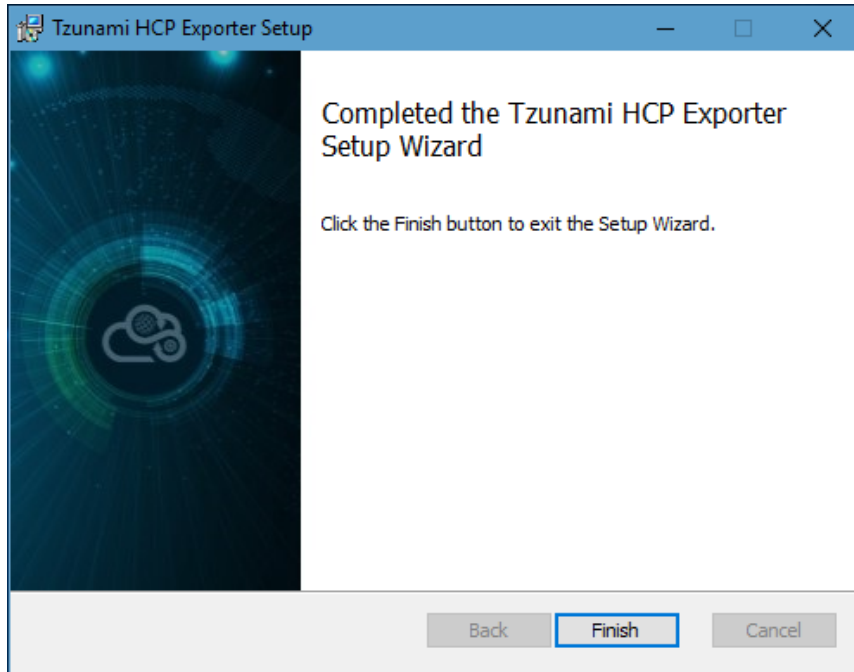


Figure 1-5: Installation Complete Window



When Tzunami HCP Exporter is installed, it comes with a default license that can be used for evaluation purpose only. This license is limited in time and number of operations.

1.4 CONFIGURATION OF TZUNAMI SERVICE SETTINGS

1. When installing **Tzunami Deployer/Exporter/Remote Service** for the first time, a **Tzunami Service Settings** dialog is displayed. In **Tzunami Service Settings**, the Licensing Service, Link Resolver Service and O365 AD Service are pointed to localhost (same machine).

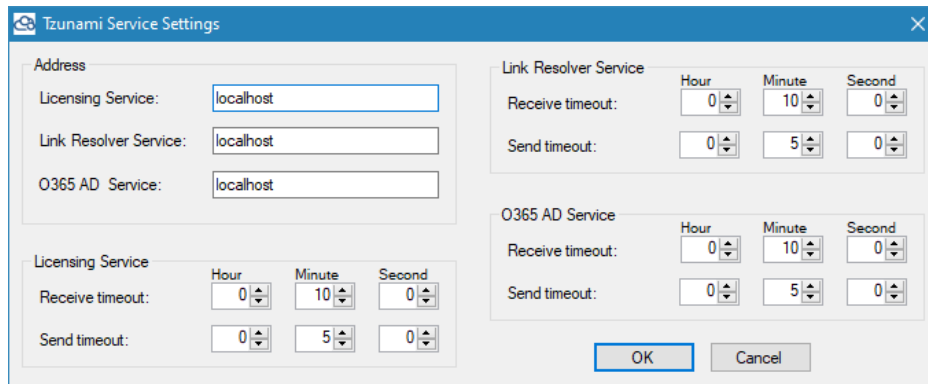


Figure 1-6 Deployer Settings Manager



User can run the **Settings Manager.exe** application from the installation directory to display this service settings dialog at any time and updated the settings to point the Tzunami services as required.

In case of Remote Service installation, restart the Tzunami Remote Service after updating the Tzunami Service Settings.

If these services are installed in other machine, point to that machine with machine name or IP Address.

2. Click on **OK**.

1.5 UNINSTALL TZUNAMI HCP EXPORTER

This section of the guide illustrates different ways to remove or uninstall Tsunami HCP Exporter from your HCP Server. Here are the two different ways to uninstall Tsunami HCP Exporters:

- Uninstallation using Installer
- Uninstallation using Control Panel

To uninstall Tsunami HCP Exporter, user needs to be a Local Administrator in the HCP Exporter installed machine. Uninstalling Tsunami HCP Exporter is simple and easy. You can remove or uninstall it in no time. You don't need to reboot your computer once the uninstalling process is complete.



Log files, licensing information files etc. will remain after uninstalling Tsunami HCP Exporter. You can manually delete those files from your computer if needed. By default logs are located at the "C:\Program Files\Tsunami\Deployer 4.0\Exporter\Logs", or where Tsunami HCP Exporter is installed. Tsunami HCP Exporter Options information will be available in "C:\Documents and Settings\All users\Application Data\Local\Tsunami" location.

1.5.1 Uninstallation using Installer

To uninstall Tsunami HCP Exporter using Installer

1. Close **Tsunami HCP Exporter**.
2. Unzip the zip file, and run TsunamiHCPExporter.msi. The Tsunami HCP setup wizard (Welcome window) will launch. To advance through the remove installation wizard, click "**Next**" at the bottom of the screen.
3. In the Change, repair or remove installation panel, click "**Remove**" button to proceed to remove Tsunami HCP Exporter from your computer.
4. In the Ready to remove Tsunami HCP Exporter panel, click "**Remove**" to remove Tsunami HCP Exporter from your computer.
5. Click **Finish** to exit the setup wizard.



You can right-click Tsunami HCP Exporter setup (TsunamiHCPExporterSetup.msi) file and select **Uninstall** to remove or uninstall Tsunami HCP Exporter from your computer.

1.5.2 Uninstallation using Control Panel

To uninstall Tsunami HCP Exporter using Control Panel

1. Close **Tsunami HCP Exporter**.
2. Click **Start > Control Panel > Add or Remove Programs**.
3. In Add or Remove Programs window, right-click the Tsunami HCP Exporter application you want to remove, and then click **Uninstall**.

2 TZUNAMI HCP EXPORTER

This chapter contains information about Tsunami HCP Exporter. It contains the following topics:

- *Overview*
- *Exporting from HCP*
- *Command-line Export*
- *Logging settings*
- *Best Practice*

2.1 OVERVIEW

Tsunami HCP Exporter enables migrating HCP content into SharePoint 2007, SharePoint 2010, SharePoint 2013, SharePoint 2016, and SharePoint Online using Tsunami Deployer.

To load HCP content into **Tsunami Deployer**, you must first extract the content, using **Tsunami HCP Exporter**, into **TDX** (Tsunami Deployer Export) and **STDX** (Separate Tsunami Deployer Export) files. You can then load this **TDX** file into a Deployer project.



When working with Tsunami Deployer on several machines, you can run an export on one machine and load the exported data on another.

Tsunami HCP Exporter is distributed as an external tool from Tsunami Deployer.

2.1.1 Supported Types

The following items are exported from HCP:

- Namespace
- Folder
- Document (including Versions)

2.1.2 Security

In addition to the structure and items, **Tsunami HCP Exporter** extracts security information. The following permissions are used in the exporter:

- Browse
- Read
- Write
- Delete
- Purge
- Privileged
- Search
- Read ACL
- Write ACL
- Change Owner
- None

Each item is assigned an ACL defining the permissions of the various members according to the roles they were assigned.

2.2 EXPORTING FROM HCP

The **Tsunami HCP Exporter** enables you to export HCP content to a **TDX** file.



When exporting, keep the following in mind:

Export in small chunks: When exporting from your source system, perform the export in small chunks of about 40K-50K files each that have a common business logic or some other logic.

Ensure consistency: Make sure that the content of the different exports does not overlap and that, while exporting, no changes are made to the source data.

To export to a TDX file:

1. Run the **Tsunami HCP Exporter** from installation location or Start menu.

(e.g. C:\Program Files (x86)\Tsunami\Deployer 4.0\Exporters\HCP\TsunamiExporter.exe)

Or

In Tsunami Deployer, **Right-Click** in the HCP tab source store area and select **Export HCP to TDX**.

The Welcome screen of the Export Wizard appears.

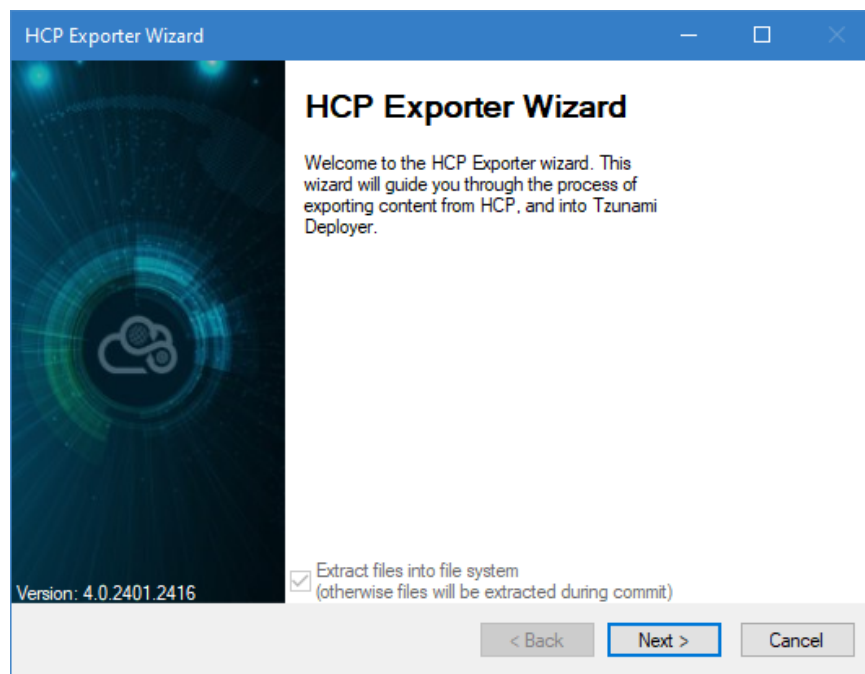


Figure 2-1: HCP Exporter Wizard

Table 2-1: HCP Exporter, Welcome screen - Description of fields

Fields	Description
Extract files into file system (otherwise files will be extracted during commit)	<p>Check this option if you wish to download the binary files from HCP server to the file system and store them in the FileStore folder, in the same location as the TDX file.</p> <p>If this option is unchecked, no files are downloaded at the export stage. The files are only downloaded when they are needed, in the commit stage.</p> <ul style="list-style-type: none"> • To download files from HCP server during commit stage, you must install Tsunami HCP Exporter on the Tsunami Deployer installed machine.

Click **Next**.

2. Click the **Connection** tab and enter the information required for the exporter to connect to HCP.

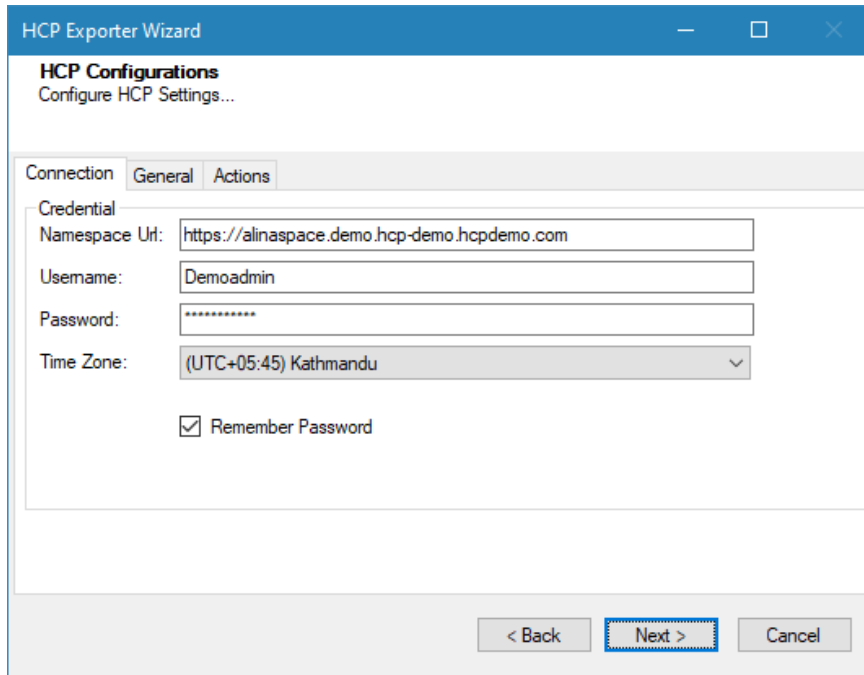


Figure 2-2: HCP Configurations Screen – Connection Tab

Table 2-2: HCP Configurations Screen – Description of Fields

Field	Description
Namespace Url	Enter the url of a namespace.
Username	Enter the username to use when connecting to the Namespace.
Password	Enter the password to use when connecting to the Namespace.
Time Zone	Select the time zone.
Remember password	Check this option if you wish to save your password for next login

3. Click the **General** tab and enter general export information.

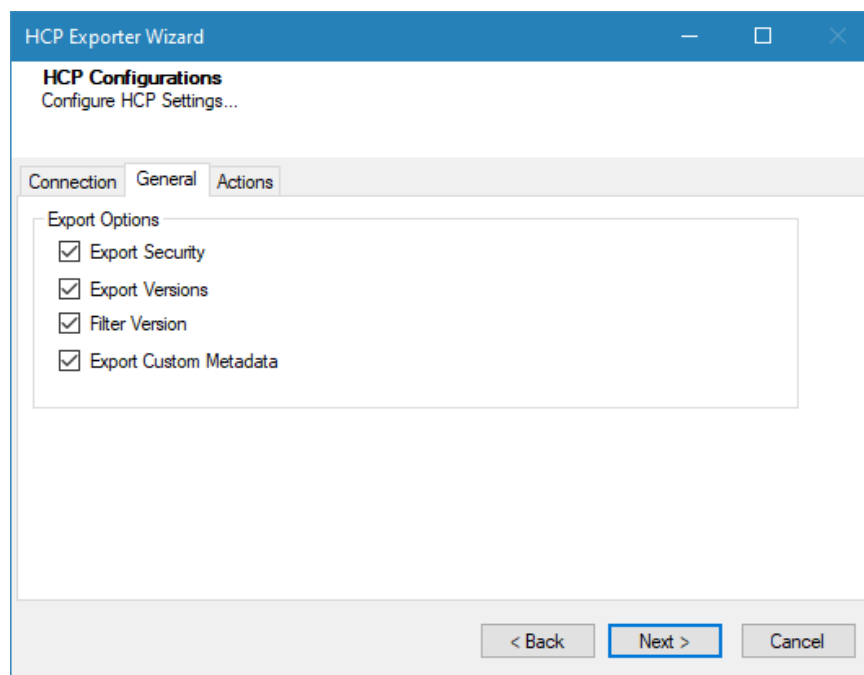


Figure 2-3: HCP Configurations Screen – General Tab

Table 2-3: HCP Configurations Screen, General Tab – Description of Fields

Field	Description
Export Security	Check this option if you wish to export the security permissions of items.
Export versions	Check this option if you wish to export all versions of documents. <ul style="list-style-type: none"> • Versioning should be enabled in Tenant/Namespace. • If you do not check this option, only the latest version of each document is exported.
Filter Version	Check this option to apply or not filter for versions.
Export Custom Metadata	Check this option if you wish to export Custom Metadata assigned the document.

4. Click on **Actions** tab.

The **Actions** tab allows you to use different actions that can be taken in the exporter.

- **Auto Pause:** The export process is paused and resumed using this functionality at a set time each day. The feature can be turned on or off using the **Use Auto Pause** check box. The feature can be checked by the user, who can also select the pause and resume times. The user can deselect it to turn off the feature.

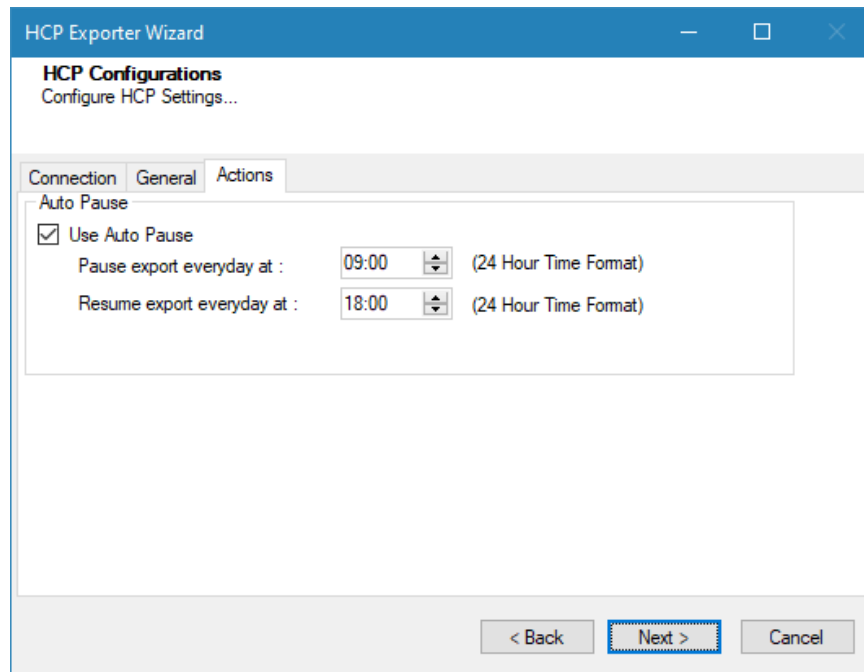


Figure 2-4: HCP Configurations Screen – Actions Tab

Table 2-4: HCP Configurations, Actions Tab - Description of fields

Field	Description
Auto Pause	
Use Auto Pause	To use the auto-pause and resume feature, select this option. To turn off this function, uncheck this box.
Pause export every day at	Set the daily time that the export process should pause.
Resume export every day at	Set the daily time for restarting the interrupted export operation.

The settings for actions are only applied to this exporter instance that is currently executing when the user clicks the **Next** button.

5. Click **Next**. Select the folder(s) to export.

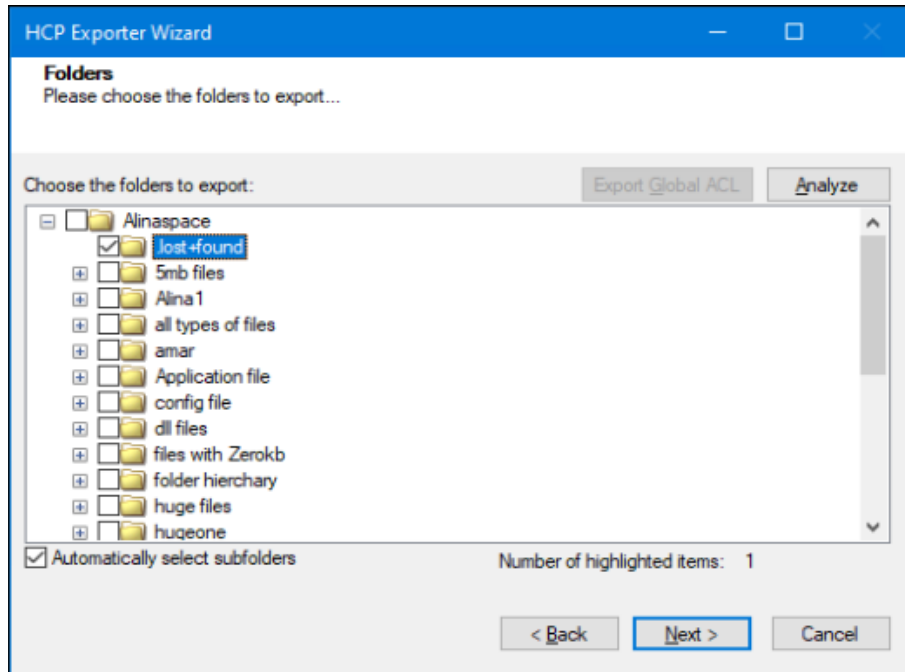


Figure 2-5 Folders Screen



You can select all subfolders of a selected folder by checking Automatically select subfolders.

Analyzer screen appears. Analyzer screen provides the detail information that helps to plan for the export (chunk size) based on File size and number of items.

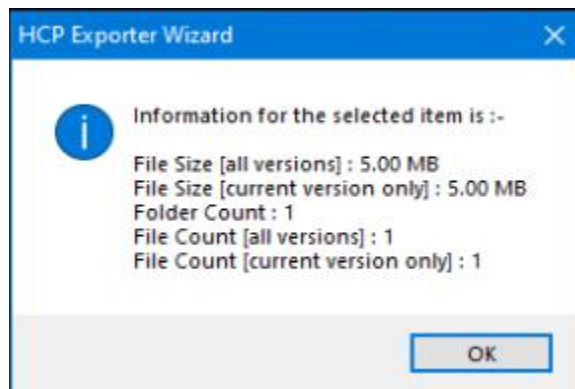


Figure 2-6 Analyzer Information

6. Click **Next**. The Filter screen appears.

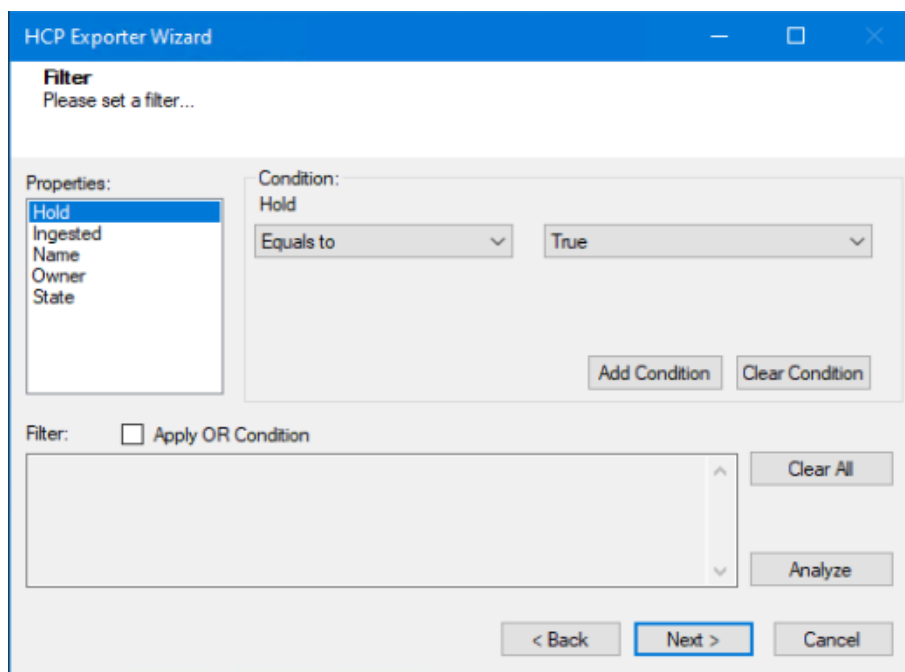


Figure 2-7 Filter Screen

7. Set up filtering as follows:

- a. In the Properties field, select a property.
- b. In the Condition field, select a condition from the dropdown list and enter or select values in the corresponding field.
- c. Click **Add Condition**. The condition is added to the Filter area, displaying the full filter expression.



You can only add one condition per property.

You can edit a condition for a property by selecting the property and modifying the condition type or values that are currently assigned to it.

You can remove a condition from a property or all the conditions from all the properties by clicking **Clear Condition** or **Clear All**, respectively.

For example, if 'Ingested' property is applied in filter, the item(s) will be filtered based on the valid condition(s) from 'Ingested' property.

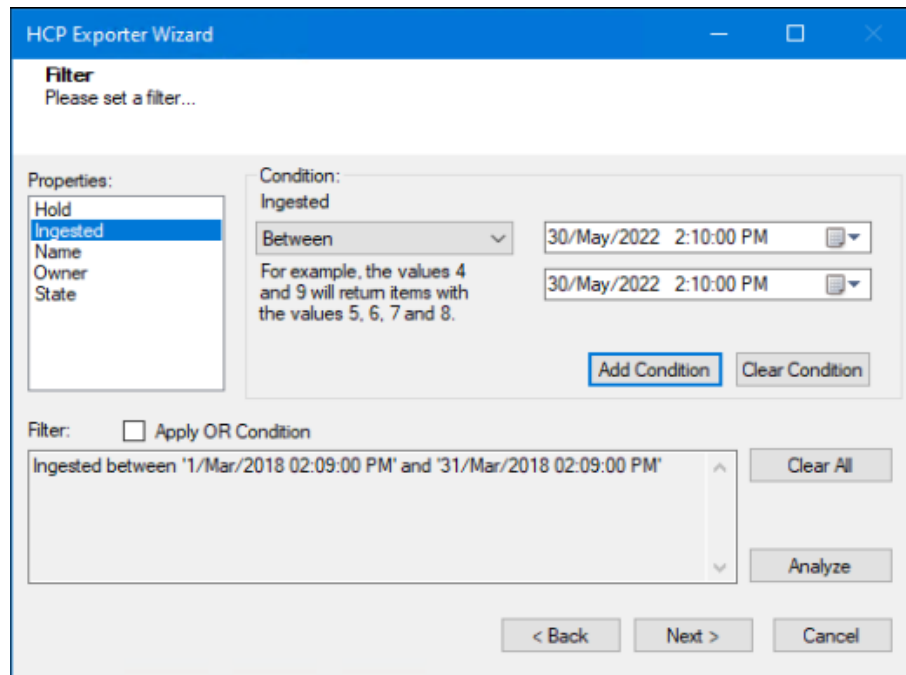


Figure 2-8 Filter Property

8. Click **Next**. The Destination Folder screen appears.

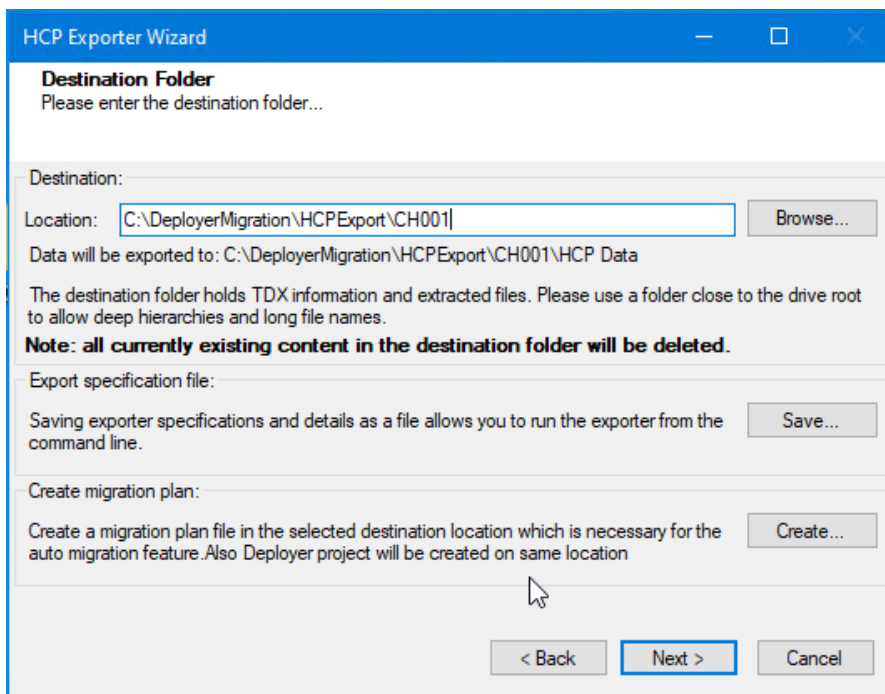


Figure 2-9: Destination Folder Screen

Specify where to export the files and generated **TDX** information. Make sure you are saving to a folder with a descriptive name and under a well-organized file system hierarchy. It is recommended to export to a folder that is as close to the root as possible.



When exporting deep hierarchy, the property which store the path for exported folder/files may exceed the maximum character supported by the property (typically 260 characters defined in the Windows API). To overcome such condition, it is recommended to export to a folder that is as close to the root as possible.

Starting in Windows 10, version 1607, MAX_PATH limitations have been removed from common Win32 file and directory functions. Please, refer information published by Microsoft from following link and consult with your system administrator to remove the limitation whenever possible.

<https://docs.microsoft.com/en-us/windows/win32/fileio/maximum-file-path-limitation?tabs=registry>

Click **Save** under **Export specification file** for saving export specification details as an XML file which can be used to run the exporter in command-line mode. See the section **Command-line Export** below for more details.

9. Click **Next**.



If the export folder already exists, a warning appears, informing you that the destination folder already exists and if you continue all existing information will be deleted.

Clicking **OK** confirms overwrite and clicking **Cancel** returns you to the Destination Folder screen to change the destination folder.

An Exporting screen appears with a progress bar and execution report, and the export process begins. During the export process, a **Pause** button is displayed. Users can manually pause and resume the export process (despite of scheduled pause/resume time) by clicking on **Pause/Resume** button.

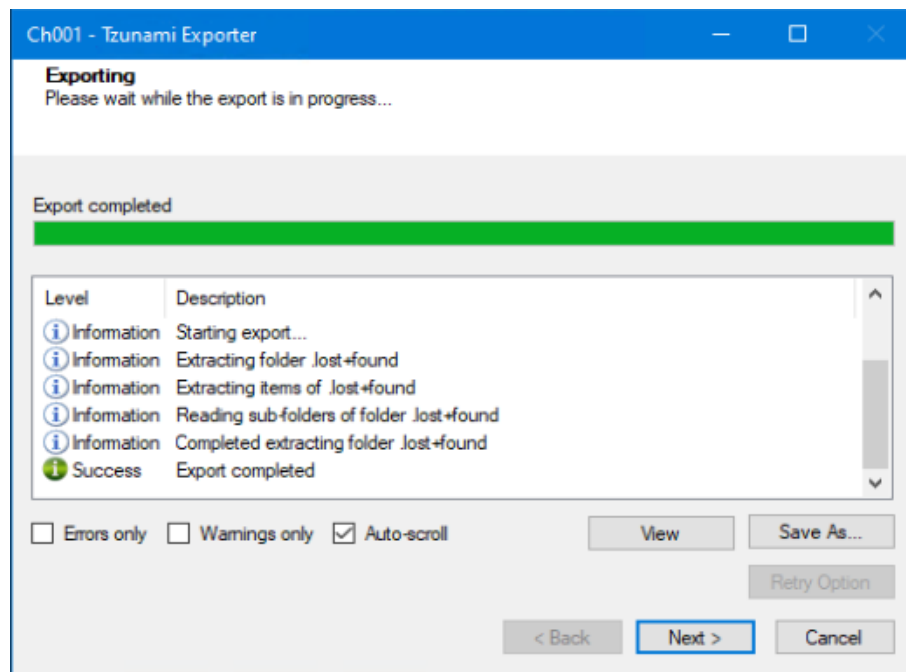


Figure 2-10: Exporter Progress Screen



- You can save the export report by clicking **Save As...** after the export is complete.
- You can check **Auto-scroll** to display the latest progress messages, as they appear.
- You can display only export errors by checking **Errors only**.
- You can display only export warnings by checking **Warnings only**.

10. Click **Retry Option**, if there are failed item(s).
11. Click **Next**. The Export Complete screen appears.
12. Click **Done**. The Tsunami HCP Export wizard is closed.

If the exporter was run from Tsunami Deployer, after the extraction process completes successfully, you are prompted to load the exported data into the current Tsunami Deployer project. Clicking 'Yes' begins the process of loading the content from the previously exported **TDX** file into the project. For more information about loading sources, refer to the [Tsunami Deployer User Guide](#).

2.3 COMMAND-LINE EXPORT

Tsunami HCP Exporter provides ability to run export sessions non-interactively using command line instructions. This allows administrators to plan and schedule long running migration jobs through scripts, batch files and schedulers according to needs and organizational timetables. To run the exporter in batch mode you will need exporter specification file explained in the 'The Destination Folder screen appears' step (**Click Save under Export specification** file for saving export specification details of the export wizard. The file contains all the export option details including:

- Source ECM connectivity information (Server Address, User Name, Password etc.)
- Items to export
- Destination and Log Folder
- Filter
- Exporter specific options

This file can be edited to suit your needs, however the XML schema of the file should not be altered. It is recommended that you generate a sample specifications file in the Destination Folder Screen selection step of the export wizard and use it as a template to create your own specification file.

Once the specification file is ready, you can run the exporter from command line using command:

TsunamiExporter.exe [-r <ResultFile>] -s <ExportSpecificationsFile>

Usage

Field	Description
-r	Outputs export results into an XML file [Optional]
-s	XML file containing export specifications

For example:

```
C:\User\Administrator> "C:\Program Files (x86)\Tsunami\Deployer  
4.0\Exporters\HCP\TsunamiExporter.exe" -s "D:\Spec Files\specs1.xml"
```

```
C:\Program Files (x86)\Tsunami\Deployer 4.0\Exporters\HCP> TsunamiExporter.exe -s "D:\Spec  
Files\specs1.xml"
```

Based on your needs you can create number of specification files and use them to run multiple export sessions as batch commands.



You will need to provide absolute path for **TsunamiExporter.exe** and **ExportSpecificationsFile** in the command if you are not running from the exporter installation directory.

In Microsoft Windows Server 2003 and Windows Server 2008 environment, if USG (Universal Security Group) is enabled, Users with low privileges sometimes cannot export ECM contents. To export contents using command line, User must run with elevated or administrative privileges.

To export contents with elevated or administrative privileges, you can run the exporter from command line using command:

```
RUNAS /trustlevel:"Unrestricted" "<ExporterInstallationDirectory>\TsunamiExporter.exe" -s  
"<Spec file path>\Specfilename.xml" "
```

For example:

```
C:\> RUNAS /trustlevel:"Unrestricted" "C:\Program Files (x86)\Tsunami\Deployer  
4.0\Exporters\HCP\TsunamiExporter.exe " -s "D:\Spec Files\specs1.xml"
```

2.4 LOGGING SETTINGS

In Tzunami Exporter, log is written in a persistent medium having as much information as possible about events that occur while the software runs. That information plays a vital role while diagnosing if any issue occurs during the export process. Hence, it is worth mentioning that logger writes each and every details during.

Tzunami Inc provides the settings for writing logs. There are the following log levels that the user can change before running the tool.

1. Go to installation directory of the exporter and open **TzunamiExporter.exe.config** file in an editor.
2. Locate the key and set corresponding values as mentioned below:
 - **LogLevel:** Set the esteem to “Debug” or “High” or “Normal” or “low” or “none”.

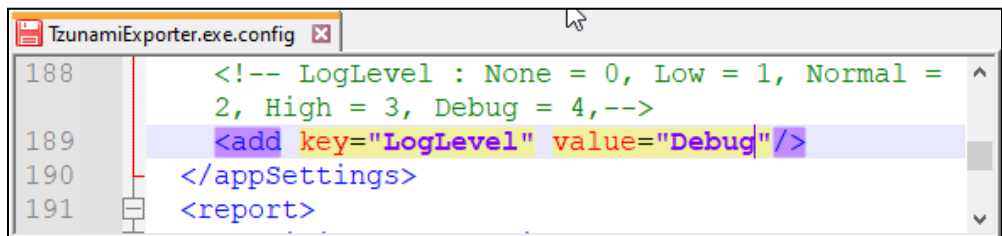


Figure 2-11 Log level Settings

- **Debug:** Writes logs as much as possible. So, this setting includes the maximum level of verbosity. By default, the tool is packaged with this setting.
- **High:** Writes logs as much as possible for warnings and errors. However, it will not log possible diagnostic information.
- **Normal:** Writes logs for anticipated errors and warnings.
- **Low:** Critical errors are logged. There will be as low as possible information logged.
- **None:** No such logs are written.

3. Save the file. Then run the exporter.

2.5 BEST PRACTICE

Due to the technological differences between HCP and SharePoint, the following best practices should be taken into consideration:

- Follow the guidelines below when choosing the target structure.

Table 2-5: Target Structure Guidelines

HCP Item Type	Relevant SharePoint Types
Namespace	<ul style="list-style-type: none"> • Document Library
Folder	Folder
Document	Document

3 COPYRIGHT AND TRADEMARK

© Copyright 2024. Tsunami Inc. All rights reserved.

All intellectual property rights in this publication are owned by Tsunami, Inc. and protected by United States copyright laws, other applicable copyright laws and international treaty provisions. Tsunami, Inc. retains all rights not expressly granted. No part of this publication may be reproduced in any form whatsoever or used to make any derivative work without prior written approval by Tsunami, Inc.

No representation of warranties for fitness for any purpose other than what is specifically stated in this guide is made either by Tsunami, Inc. or by its agents.

Tsunami, Inc. reserves the right to revise this publication, and/or make improvements or changes in the product(s) and/or the program(s) described in this documentation at any time without prior notice.

Any software on removable media described in this publication is furnished under a license agreement included with the product as a separate document. If you are unable to locate a copy, please contact Tsunami, Inc. and a copy will be forwarded to you.

Tsunami is either a registered trademark or a trademark of Tsunami, Inc. in the United States and/or other countries.

All other brand or product names are trademarks or registered trademarks of their respective companies.

For further information, you can contact Tsunami Inc. at:

Tsunami Inc.

601 108th Avenue, NE

Suite 1900

Bellevue, WA 98004, USA

Email: sales@tsunami.com, support@tsunami.com

Web: <http://www.tsunami.com>