



# **Tsunami Deployer Confluence Exporter Guide**

**Supports extraction of Confluence Enterprise contents and migrate to Microsoft SharePoint using Tsunami Deployer.**

**Version 4.0  
Last Updated: January 25, 2024**

# Table of Contents

---

<b>PREFACE .....</b>	<b>IV</b>
INTENDED AUDIENCE.....	IV
CONVENTIONS .....	IV
TECHNICAL SUPPORT.....	V
COMMENTS AND SUGGESTIONS .....	V
<b>1 INSTALLING TZUNAMI CONFLUENCE EXPORTER .....</b>	<b>1-6</b>
1.1 SYSTEM REQUIREMENTS.....	1-7
1.2 PERMISSION REQUIREMENTS.....	1-7
1.2.1 Connecting Confluence Server.....	1-7
1.3 INSTALLING TZUNAMI CONFLUENCE EXPORTER .....	1-8
1.4 CONFIGURATION OF TZUNAMI SERVICE SETTINGS.....	1-10
1.5 UNINSTALL TZUNAMI CONFLUENCE EXPORTER.....	1-11
1.5.1 Uninstallation using Installer. ....	1-11
1.5.2 Uninstallation using Control Panel.....	1-12
<b>2 TZUNAMI CONFLUENCE EXPORTER .....</b>	<b>2-13</b>
2.1 OVERVIEW.....	2-14
2.1.1 Supported Types .....	2-14
2.1.2 Security .....	2-14
2.2 EXPORTING FROM CONFLUENCE.....	2-15
2.3 COMMAND-LINE EXPORT.....	2-23
2.4 RE-EXPORT.....	2-25
2.5 LOGGING SETTINGS.....	2-29
2.6 BEST PRACTICES.....	2-29
<b>3 COPYRIGHT AND TRADEMARK .....</b>	<b>3-31</b>

## List of Tables

---

Table 1-1: System Requirements .....	1-7
Table 2-1: Confluence Configurations, General Tab – Description of Fields .....	2-16
Table 2-2: Confluence Configurations, Advanced Tab – Description of Fields .....	2-16
Table 2-3 Confluence Configurations, Direct Roots Tab - Description of fields.....	2-18
Table 2-4: Confluence Configurations, Actions Tab - Description of fields .....	2-18
Table 2-5 Connection – Description of Fields .....	2-20
Table 2-6 Analyzer Information Description.....	2-21
Table 2-7: Target Structure Guidelines .....	2-30

## List of Figures

---

Figure 1-1: Welcome Window: .....	1-8
Figure 1-2: End-User License Agreement Window .....	1-8
Figure 1-3: Custom Setup Window .....	1-9
Figure 1-4: Installing Tsunami Confluence Exporter Window .....	1-9
Figure 1-5: Installation Complete Window .....	1-10
Figure 1-6 Deployer Settings Manager .....	1-10
Figure 2-1: Confluence Configurations Screen – General Tab .....	2-15
Figure 2-2: Confluence Configurations Screen – Advanced Tab.....	2-16
Figure 2-3 Confluence Configurations Screen – Direct Roots Tab .....	2-17
Figure 2-4: Confluence Configurations Screen – Actions Tab.....	2-18
Figure 2-5 Connection Screen for On-Premise Confluence Server .....	2-19
Figure 2-6 Connection Screen for Confluence Server on cloud.....	2-19
Figure 2-7 Analyze Option.....	2-20
Figure 2-8 Analyzer Information .....	2-21
Figure 2-9 Global ACL Mapping file.....	2-22
Figure 2-10: Folder Selection Screen .....	2-22
Figure 2-11: Filter Screen .....	2-23
Figure 2-12 Re-Export Window.....	2-25
Figure 2-13 Confluence Configurations Window .....	2-26
Figure 2-14 Connection Window .....	2-26
Figure 2-15 Folders Window .....	2-27
Figure 2-16 Filter Window .....	2-27
Figure 2-17 Destination Folder Window .....	2-28
Figure 2-18 Exporting Window .....	2-28
Figure 2-13 Log level Settings .....	2-29

# PREFACE

This guide provides installation procedures for Tzunami Confluence Exporter and detail steps to extract contents from Confluence using Tzunami Confluence Exporter. The guide also describes how to extract contents non-interactive way using command-line instructions and best practice.

This preface contains the following topics.

- *Intended Audience*
- *Conventions*
- *Technical Support*
- *Comments and Suggestions*

## INTENDED AUDIENCE

Tzunami Confluence Exporter Guide is intended for:

- System Administrators who are responsible for exporting Confluence contents and setting migration environment using Tzunami Deployer.
- Project Managers and IT Managers who create and regulate usage of Tzunami Deployer and Tzunami Confluence Exporter.

## CONVENTIONS

The following text conventions are used in this document:

- Commands and keywords are given in **boldface**.
- Terminal sessions, console screens, or system file names are displayed in fixed width fonts.



**Caution** indicates that the described action might result in program malfunction or data loss.



**Notes** contain helpful suggestions about or references to materials not contained in this manual.



**Tips** provide information that might help you solve a problem.

## TECHNICAL SUPPORT

Before contacting Tsunami Support team, ensure that you are referencing the latest copy of this user guide (Ctrl+Click to follow link) [Tsunami Deployer Confluence Exporter Guide](#).

For additional information, please contact Tsunami Support Team at [support@tsunami.com](mailto:support@tsunami.com)

## COMMENTS AND SUGGESTIONS

Your feedback is important to us and will help us to provide the most accurate and high-quality information possible in our documentation. Send us comments or suggestions by email to [support@tsunami.com](mailto:support@tsunami.com). Be sure to include as much of the following as possible:

- The document title.
- The location that the document was accessed from (either downloaded from Tsunami web site or the Tsunami Deployer User Guide and Tsunami Confluence Exporter Guide available in Tsunami Deployer).
- The section or chapter number and the original text found in the document.



When you send information to Tsunami Deployer, you grant Tsunami a non-exclusive right to use or distribute the information in any way it believes appropriate without incurring any obligation to you.

# 1 INSTALLING TZUNAMI CONFLUENCE EXPORTER

This chapter contains information about installing Tzunami Confluence Exporter. It contains the following topics:

- *System Requirements*
- *Permission Requirements*
- *Installing Tzunami Confluence Exporter*
- *Uninstall Tzunami Confluence Exporter*

## 1.1 SYSTEM REQUIREMENTS

The following table lists the system requirements for Tsunami Deployer Confluence.

Table 1-1: System Requirements

Components	Minimum Requirements
Computer and processor	2GHz Pentium processor or equivalent
Memory	2 GB (Minimum); 4GB (Recommended)
Hard disk	50Mb (additional space will be required for the Tsunami Deployer projects, which may vary from 10 Mb to 4 GB).
Supported Operating System	Windows Server 2008/2012, Windows Vista, Windows 7, Windows 8 & Windows 10 or higher.
Supported Architectures	x86 and x64
Network	Intranet/Internet access depending on connectivity requirements
Display	800 x 600, 256 colors (minimum); 1024 x 768 high color
Microsoft .NET Framework	Microsoft .Net Framework 4.5.1 (including lower versions like 2.0, 3.0, 3.5 and 4.0)

## 1.2 PERMISSION REQUIREMENTS

### 1.2.1 Connecting Confluence Server

For connecting to Confluence server using Tsunami Confluence Exporter, you need to enable the Remote APIs from the Confluence Administration Console.

#### To enable Remote API:

1. Go to the Confluence 'Administration Console':
  - Choose **Browse > Confluence Admin**. The 'Administrator Access' login screen will be displayed.
  - Enter your password and click **Confirm**. You will be temporarily logged into a secure session to access the 'Administration Console'.
2. Select '**General Configuration**' in the left-hand panel.
3. Click '**Edit**' next to '**Feature Settings**'.
4. To enable Remote API, check '**Remote API (XML-RPC & SOAP)**'.
5. Click '**Save**' to retain your changes.



**You must disable Proxy Settings to avoid communication conflicts between Confluence Server and Tsunami Confluence Exporter. For more information, contact your system administrator.**

And user needs following permissions for connecting to Confluence Server:

- User must be member of confluence-administrator Groups.
- User must be a member of confluence-user group.

## 1.3 INSTALLING TZUNAMI CONFLUENCE EXPORTER

You can install Tzunami Confluence Exporter on any machine from which you can connect to Confluence Application Server.

### To install Tzunami Confluence Exporter:

1. Unzip the zip file, run TzunamiConfluenceExporter.msi. The Tzunami Confluence Exporter setup wizard will launch. To advance through the install wizard, click **Next**.

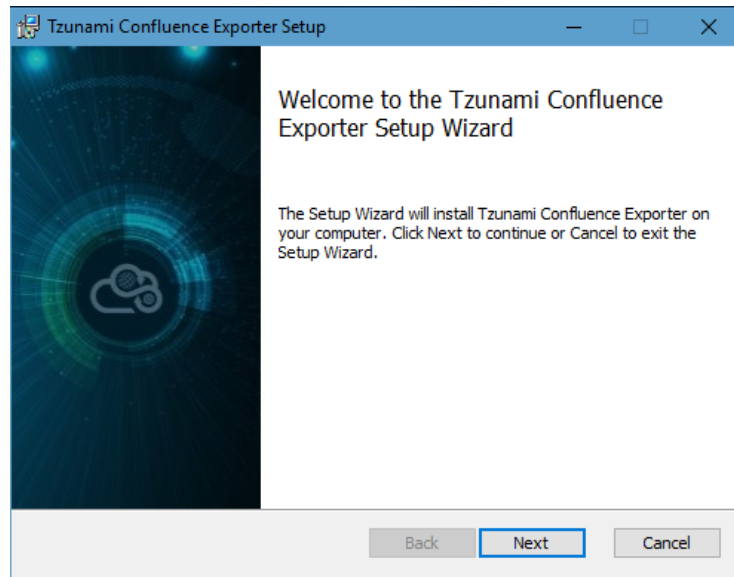


Figure 1-1: Welcome Window:

2. In the End-User Licensing Agreement panel, click "I accept the terms in the License Agreement" and click **Next** to continue installation.

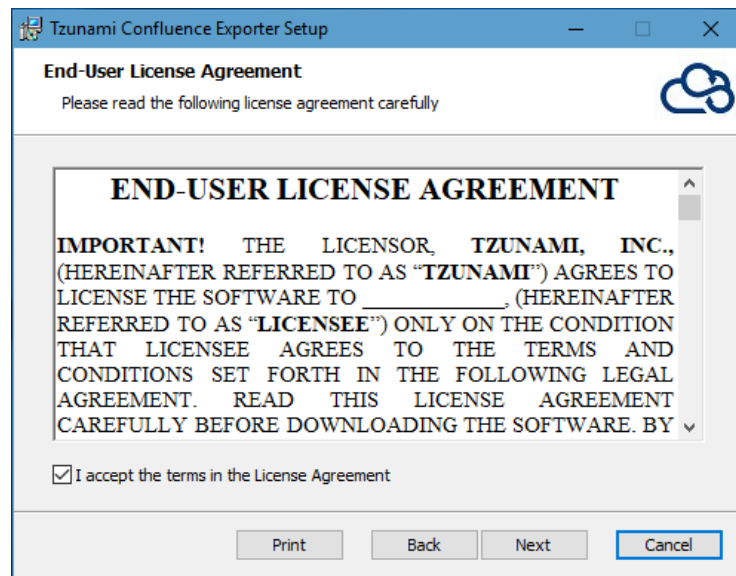


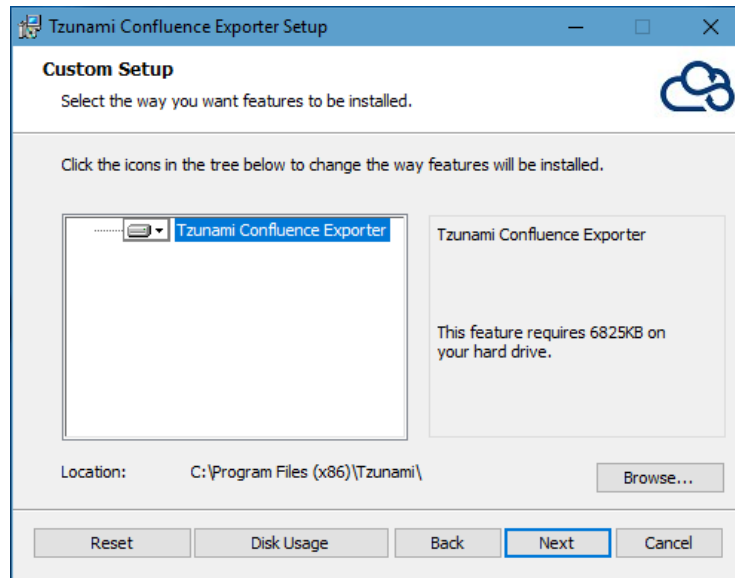
Figure 1-2: End-User License Agreement Window





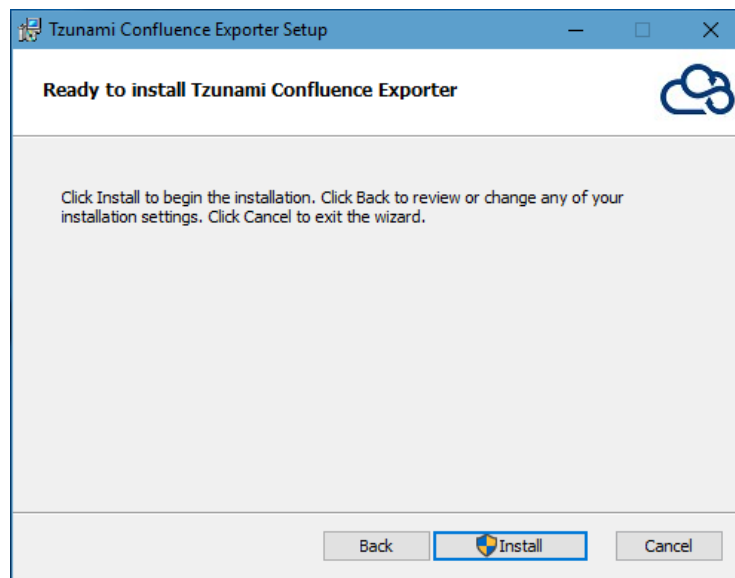
You are advised to read the terms of the license carefully before proceeding with the installation. If you decline the license terms, the installation will not proceed.

3. In the Custom Setup panel, do one of the following:
  - To accept the default Destination Folder, click **Next**.
  - Click **Browse**, locate and select a destination folder, click **OK**, and then click **Next**.



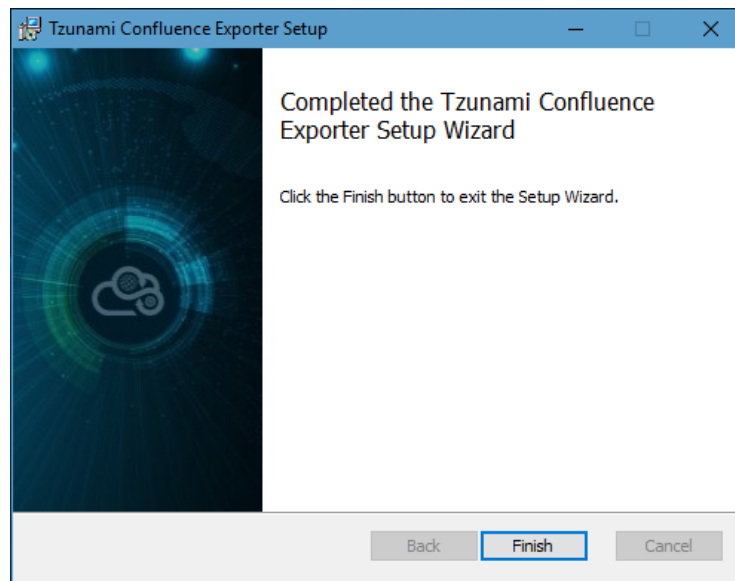
**Figure 1-3: Custom Setup Window**

4. In the Ready to install Tsunami Confluence Exporter panel, click **Install**. Confluence Exporter is installed.



**Figure 1-4: Installing Tsunami Confluence Exporter Window**

5. Click **Finish** to exit from the setup wizard.



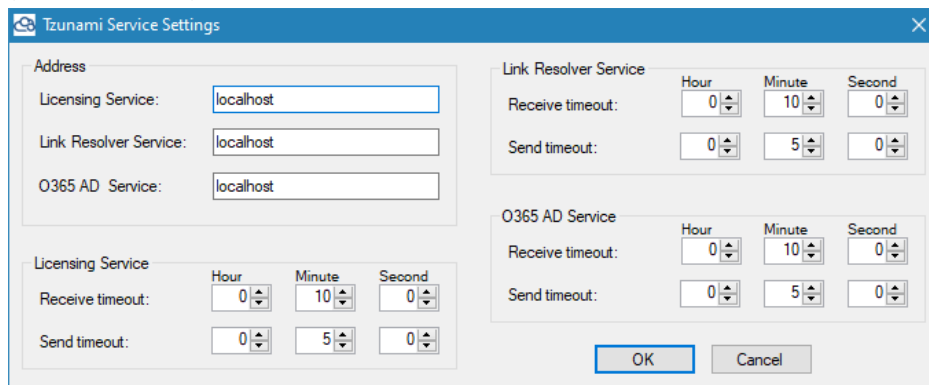
**Figure 1-5: Installation Complete Window**



When Tsunami Confluence Exporter is installed, it comes with a default license that can be used for evaluation purpose only. This license is limited in time and number of operations.

## 1.4 CONFIGURATION OF TZUNAMI SERVICE SETTINGS

1. When installing **Tsunami Deployer/Exporter/Remote Service** for the first time, a **Tsunami Service Settings** dialog is displayed. In **Tsunami Service Settings**, the Licensing Service, Link Resolver Service and O365 AD Service are pointed to localhost (same machine).



**Figure 1-6 Deployer Settings Manager**



User can run the **Settings Manager.exe** application from the installation directory to display this service settings dialog at any time and updated the settings to point the Tsunami services as required.

In case of Remote Service installation, restart the Tsunami Remote Service after updating the Tsunami Service Settings.

If these services are installed in other machine, point to that machine with machine name or IP Address.

2. Click on **OK**.

## 1.5 UNINSTALL TZUNAMI CONFLUENCE EXPORTER

This section of the guide illustrates different ways to remove or uninstall Tzunami Confluence Exporter from your Confluence Server. Here are the two different ways to uninstall Tzunami Confluence Exporters:

- Uninstallation using Installer.
- Uninstallation using Control Panel

To uninstall Tzunami Confluence Exporter, user needs to be a Local Administrator in the Confluence Exporter installed machine. Uninstalling Tzunami Confluence Exporter is simple and easy. You can remove or uninstall it in no time. You don't need to reboot your computer once the uninstalling process is complete.



Log files, licensing information files etc. will remain after uninstalling Tzunami Confluence Exporter. You can manually delete those files from your computer if needed. By default, logs are located at the "C:\Program Files\Tsunami\Deployer 4.0\Exporter\Logs", or where Tzunami Confluence Exporter is installed. Tzunami Confluence Exporter Options information will be available in "C:\Documents and Settings\All users\Application Data\Local\Tsunami" location.

### 1.5.1 Uninstallation using Installer.

To uninstall Tzunami Confluence Exporter using Installer

1. Close **Tzunami Confluence Exporter**.
2. Unzip the zip file and run TzunamiConfluenceExporter.msi. The Tzunami Confluence setup wizard (Welcome window) will launch. To advance through the remove installation wizard, click "**Next**" at the bottom of the screen.
3. In the Change, repair or remove installation panel, click "**Remove**" button to proceed to remove Tzunami Confluence Exporter from your computer.
4. In the Ready to remove Tzunami Confluence Exporter panel, click "**Remove**" to remove Tzunami Confluence Exporter from your computer.
5. Click **Finish** to exit the setup wizard.



You can right-click Tzunami Confluence Exporter setup (TzunamiConfluenceExporter.msi) file and select **Uninstall** to remove or uninstall Tzunami Confluence Exporter from your computer.

## 1.5.2 Uninstallation using Control Panel

### To uninstall Tzunami Confluence Exporter using Control Panel

1. Close **Tzunami Confluence Exporter**.
2. Click **Start > Control Panel > Add or Remove Programs**.
3. In Add or Remove Programs window, right-click the Tzunami Confluence Exporter application you want to remove, and then click **Uninstall**.

## 2 TZUNAMI CONFLUENCE EXPORTER

This chapter contains information of Tsunami Confluence Exporter. It contains the following topics:

- *Overview*
- *Exporting from Confluence*
- *Command-line Export*
- *Re-Export*
- *Logging settings*
- *Best Practices*

## 2.1 OVERVIEW

Tsunami Confluence Exporter enables organizations to migrate contents from Confluence to SharePoint 2007, SharePoint 2010, SharePoint 2013, SharePoint 2016, SharePoint 2019 and SharePoint Online using Tsunami Deployer. Tsunami Confluence Exporter is easy-to-use and convenient way to extract contents from Atlassian Confluence and load contents into Tsunami Deployer.

To load Confluence content into Tsunami Deployer, you must first extract the content, using Tsunami Confluence Exporter, into TDX (Tsunami Deployer Export) and STDX (Separate Tsunami Deployer Export) files. You can then load this TDX file into a Tsunami Deployer project.



When working with Tsunami Deployer on several machines, you can run an export on one machine and load the exported data on another. Tsunami Confluence Exporter is an extension module of Tsunami Deployer. You can work with this module independent of Tsunami Deployer or from within the Deployer.

### 2.1.1 Supported Types

The Tsunami Confluence Exporter supports extraction of seven categories of contents from Confluence Server:

- Spaces
- Personal Spaces
- Pages
- Blogs
- Bookmarks
- Comments
- Attachments

### 2.1.2 Security

In addition to the structure and items, Tsunami Confluence Exporter extracts security information. The following permissions are used in the exporter:

- None
- Viewer
- Contributor
- Admin

Each item is assigned an ACL defining the permissions of the various members according to the roles they were assigned.



The exporter automatically creates four default roles that are used during the deployment process. The roles include None (No permission), Viewer (Read permission on Comments, Pages and Blogs), Contributor Edit (Add, Edit and Delete permissions on Pages, Blogs, Comments and Attachments), and Admin (change access permissions and owner of Pages).

## 2.2 EXPORTING FROM CONFLUENCE

The Tsunami Confluence Exporter enables you to export Confluence contents to a TDX file. It has simple user interface and lets you quickly extract contents such as Spaces, Pages, Blogs, Comments, Attachments, Bookmarks etc.



When exporting, keep the following in mind:

**Export in small chunks:** When exporting from your source system, perform the export in small chunks of about 40K-50K files each that have a common business logic or some other logic.

**Ensure consistency:** Make sure that the content of the different exports does not overlap and that, while exporting, no changes are made to the source data.

### To export to a TDX file:

1. In Tsunami Deployer, right-click in the Confluence tab source store area and select **Export Confluence to TDX**.

Or

Click **Start > All Programs > Tsunami > Tsunami Confluence Exporter**

The Welcome screen of the Export Wizard appears.

2. Click **Next**. The Confluence Configurations screen appears with two tabs: General and Advanced

#### a. General tab

The **General** tab allows you to select the item types that you wish to export from Confluence server. Select the item types listed in this section.

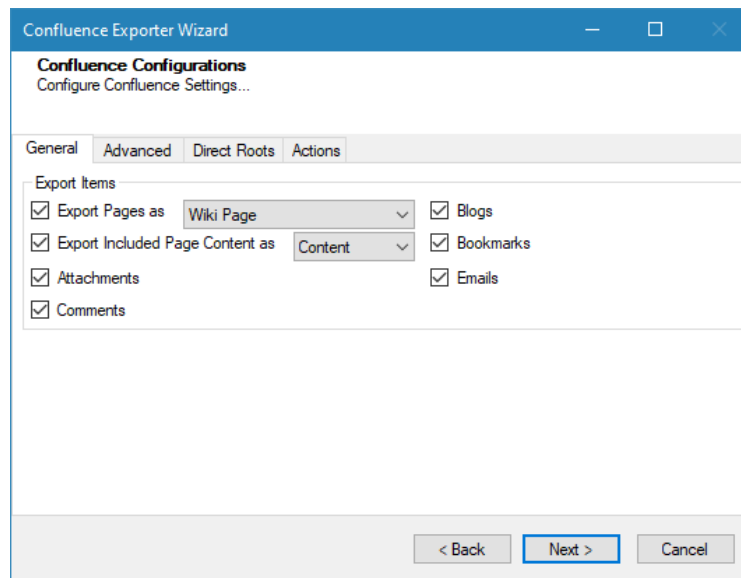


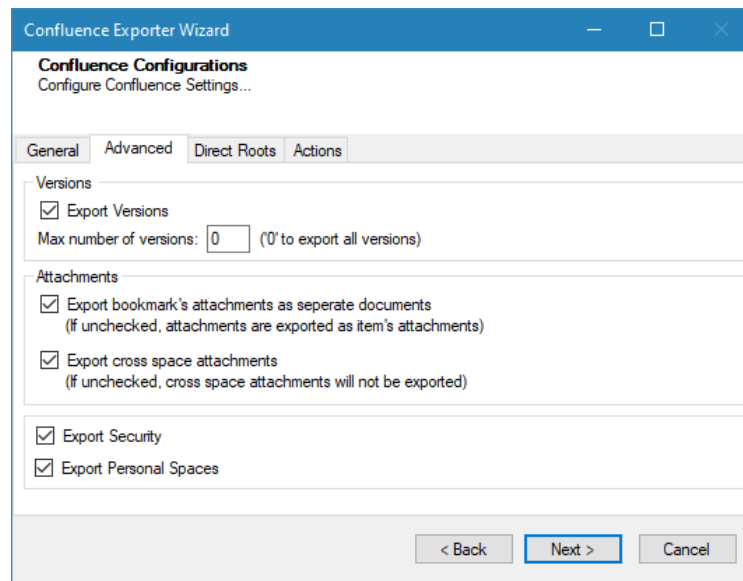
Figure 2-1: Confluence Configurations Screen – General Tab

**Table 2-1: Confluence Configurations, General Tab – Description of Fields**

Field	Description
<b>Export Items</b>	
Export Pages as	Select whether you wish to export pages as Wiki Page or Modern Page or Enterprise Wiki Page.
Blogs	Check this option if you wish to export blogs.
Export Included Page Content as	Select whether you wish to export the content of the Included Pages or export Included Pages as Page Links.
Bookmarks	Check this option if you wish to export bookmarks.
Attachments	Check this option if you wish to export attachments.
Emails	Check this option if you wish to export emails.
Comments	Check this option if you want to export comments.


**b. Advanced tab**

The **Advanced** tab allows you to specify the export options such as security, versions and attachments of bookmarks for confluence.





**Figure 2-2: Confluence Configurations Screen – Advanced Tab**

**Table 2-2: Confluence Configurations, Advanced Tab – Description of Fields**

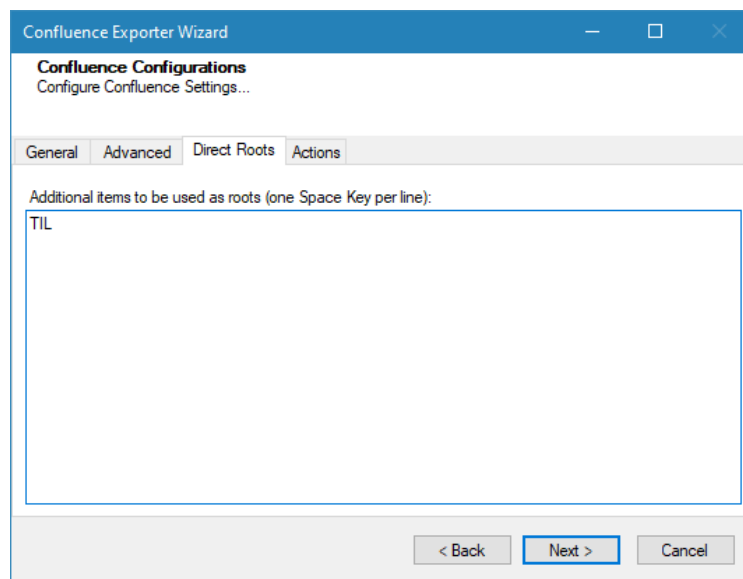
Field	Description
<b>Versions</b>	
Export Version	<p>Check this option if you wish to export all versions of items.</p> <p> Uncheck this option, if you wish to export current versions of each item.</p>



Field	Description
Max number of versions	<p>Enter the number of versions you would like to export for each item.</p> <p> Setting this value to zero will export all versions.</p> <p>If number of maximum versions is specified, number of versions from latest version are exported.</p>
<b>Attachments</b>	
<p>Export bookmark's attachment as separate documents. (If unchecked, attachments are exported as item's attachment.)</p>	<p>Check this option to export all attachments of an item into a folder "&lt;ItemType&gt; Attachments". If you do not check this option, the attachments are exported as item's attachments. Note that checking this option will separate attachments completely from the parent items.</p>
<p>Export cross space attachments (If unchecked, cross space attachments will not be exported)</p>	<p>Check this option if you wish to export cross space attachments of an item into a folder "&lt;ItemType&gt; Attachments". If you do not check this option, cross space attachments will not be exported.</p>
Export security	<p>Check this option if you wish to export security setting of the selected items.</p> <p> The user must have <a href="#">Confluence Administrator permissions in Confluence Server</a> to export security.</p>
Export Personal Spaces	<p>Check this option if you wish to export personal spaces from Confluence server.</p>

### c. Direct Roots tab

The **Direct Roots** tab allows you to enter space key as root folder so that the space will be available to select for export out of the list as well.



**Figure 2-3 Confluence Configurations Screen – Direct Roots Tab**

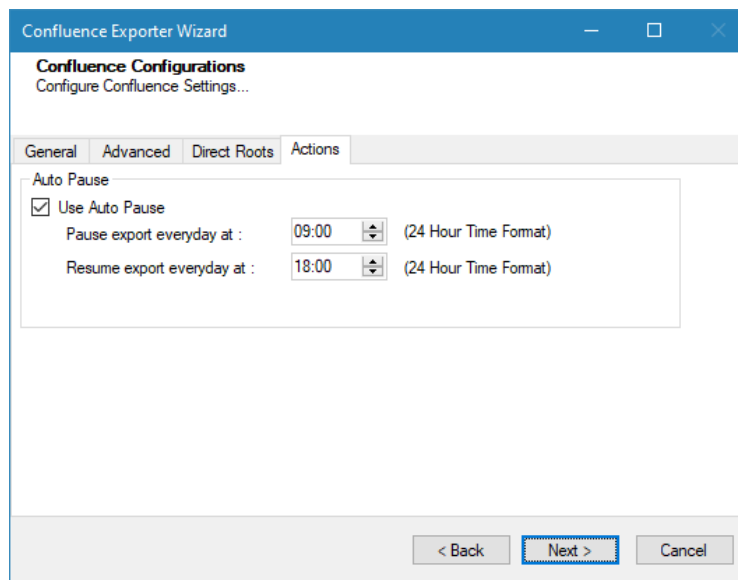
**Table 2-3 Confluence Configurations, Direct Roots Tab - Description of fields**

Field	Description
Additional items to be used as roots (one space key per line)	Enter the space key in the text box to be used as root folder.

**d. Actions tab**

The **Actions** tab allows you to use different actions that can be taken in the exporter.

- **Auto Pause:** The export process is paused and resumed using this functionality at a set time each day. The feature can be turned on or off using the **Use Auto Pause** check box. The feature can be checked by the user, who can also select the pause and resume times. The user can deselect it to turn off the feature.



**Figure 2-4: Confluence Configurations Screen – Actions Tab**

**Table 2-4: Confluence Configurations, Actions Tab - Description of fields**

Field	Description
<b>Auto Pause</b>	
Use Auto Pause	To use the auto-pause and resume feature, select this option. To turn off this function, uncheck this box.
Pause export every day at	Set the daily time that the export process should pause.
Resume export every day at	Set the daily time for restarting the interrupted export operation.

The settings for actions are only applied to this exporter instance that is currently executing when the user clicks the **Next** button.

3. Click **Next**. The Connection screen appears. You need to provide the required portal credential to connect to the Confluence server. For more information, see **Connecting Confluence Server** on page 1-7.



The screenshot shows the 'Confluence Exporter Wizard' window with the 'Connection' tab selected. The title bar reads 'Confluence Exporter Wizard'. Below the title bar, the section is titled 'Connection' with the instruction 'Please enter the connection settings...'. The 'Server Address' field contains 'http://192.168.1.1:8090'. Below this, a note states: 'This is the address of the server that will be used for exporting. A connection to this server should be available during the whole exporting process.' Under the 'Connect As:' section, the 'Default user' radio button is unselected, and the 'Different user name:' radio button is selected. The 'Different user name:' field contains 'administrator', and the 'Password:' field contains six dots. At the bottom, there are three buttons: '< Back', 'Next >', and 'Cancel'.

**Figure 2-5 Connection Screen for On-Premise Confluence Server**

The screenshot shows the 'Confluence Exporter Wizard' window with the 'Connection' tab selected. The title bar reads 'Confluence Exporter Wizard'. Below the title bar, the section is titled 'Connection' with the instruction 'Please enter the connection settings...'. The 'Server Address' field contains 'https://tzunami.atlassian.net/wiki'. Below this, a note states: 'This is the address of the server that will be used for exporting. A connection to this server should be available during the whole exporting process.' Under the 'Connect As:' section, the 'Default user' radio button is unselected, and the 'Different user name:' radio button is selected. The 'Different user name:' field contains 'ribesh.rouniyar@tzunami.com', and the 'Password:' field contains ten dots. Below the password field, there is a checkbox labeled 'Remember Password' which is currently unchecked. At the bottom, there are three buttons: '< Back', 'Next >', and 'Cancel'.

**Figure 2-6 Connection Screen for Confluence Server on cloud**

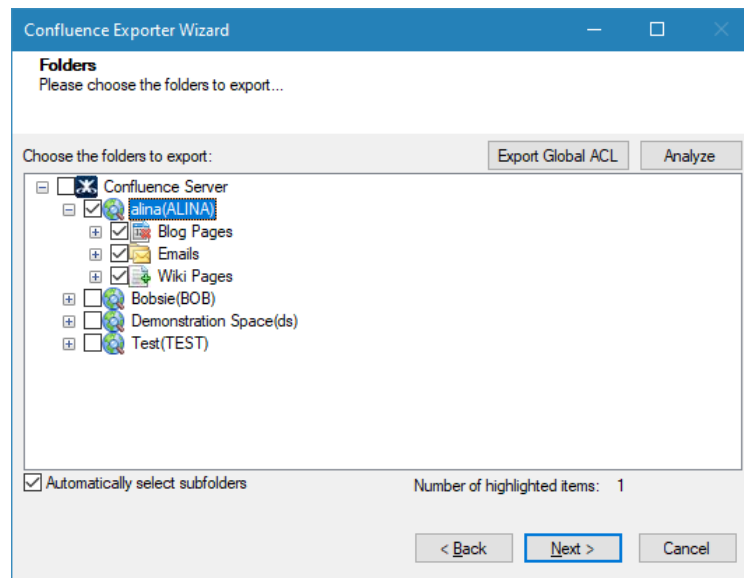
**Table 2-5 Connection – Description of Fields**

Field	Description
Server Address	Enter the URL of the Confluence Server. <b>For example,</b> <a href="http://Confluence:8080/confluence">http://Confluence:8080/confluence</a> For Confluence Server hosted in Cloud, enter the URL. <b>For example,</b> <a href="https://tzunami.atlassian.net/wiki">https://tzunami.atlassian.net/wiki</a>
	 The Server Address is optional if you have installed Tsunami Confluence Exporter on the Confluence Server installed machine with default settings.
<b>Connect As</b>	
Username	Enter the username to use when connecting to Confluence Server.
	 The user must have at least view permission on the Confluence Spaces to export its contents.
Password	Enter the password of the user

4. Click **Next**. The Folders screen appears.

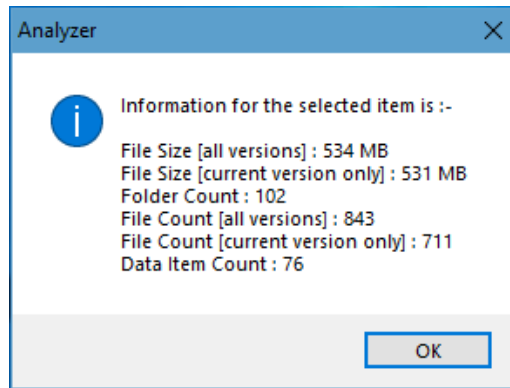
Tsunami Exporter provides quick analysis option before exporting to know the size, count of contents inside selected folder.

If you want to analyze the content: Check on the Folder(s) in tree view, then **Analyze** button is enabled. Click **Analyze**.



**Figure 2-7 Analyze Option**

Analyzer screen appears. Analyzer screen provides the detail information that helps to plan for the export (chunk size) based on File size and number of items.



**Figure 2-8 Analyzer Information**

**Table 2-6 Analyzer Information Description**

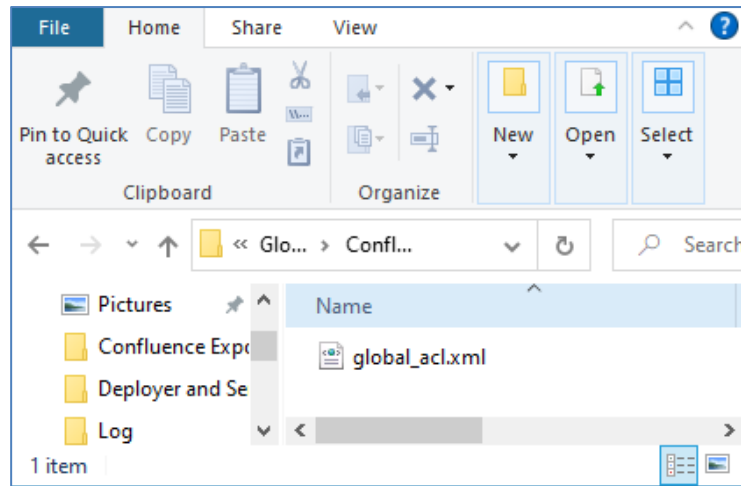
Field	Description
File Size [all versions]	Provides the total size of files for all versions of documents.
File Size [current version only]	Provides the total size of files for current version of documents.
Folder Count	Provides the number of folders.
File Count [all versions]	Provides the total number of files for all versions of documents.
File Count [current version only]	Provides the total number of files for current versions of documents.
Data Item Count	Provides the total number of data item.

You can export the Roles, Groups and Users in a file by clicking on **Export Global ACL** button. A progress bar appears while exporting the information. The file is by default exports to:

**Location:** C:\ProgramData\Tsunami\GlobalAclExport\Confluence

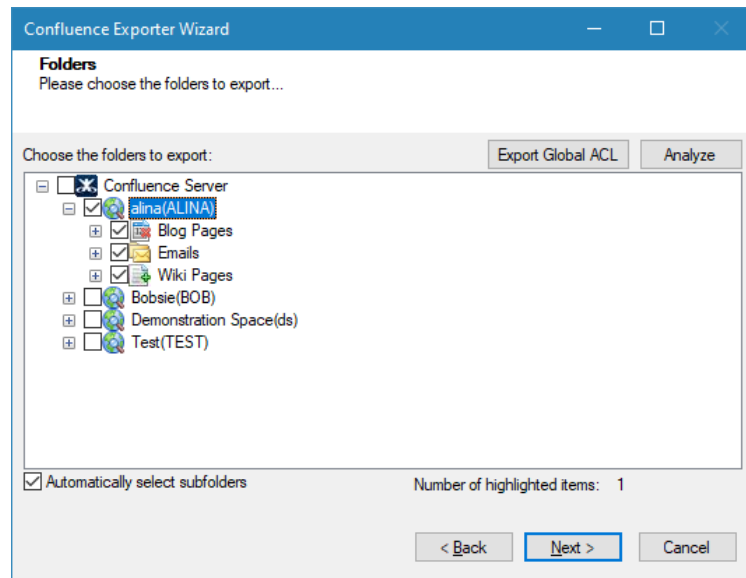
**File Name:** global\_acl.xml

This file is used in Tsunami Deployer when using Global ACL Mapping. Refer **Deployer User Guide's** section **Global ACL Mapping** for more details.



**Figure 2-9 Global ACL Mapping file**

5. Select the folders to export.



**Figure 2-10: Folder Selection Screen**



You can select all subfolders of a selected folder by checking Automatically select subfolders.

6. Click **Next**. The Filter screen appears.

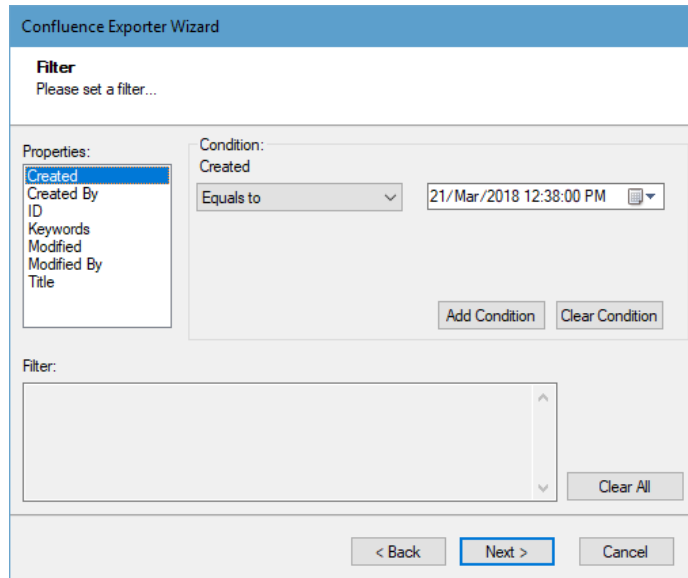


Figure 2-11: Filter Screen

7. Set up filtering as follows:

- a) In the Properties field, select a property.
- b) In the Condition field, select a condition from the drop-down list and enter or select values in the corresponding field.
- c) Click **Add Condition**. The condition is added to the Filter area, displaying the full filter expression.



You can only add one condition per property.

You can edit a condition for a property by selecting the property and modifying the condition type or values that are currently assigned to it.

You can remove a condition from a property or all the conditions from all the properties by clicking Clear Condition or Clear All, respectively.

This option works only for Data Items.

If multiple conditions are applied, only items that match all conditions are exported.

## 2.3 COMMAND-LINE EXPORT

Tsunami Exporter for Confluence provides the ability to run export sessions non-interactively using command line instructions. This allows administrators to plan and schedule long running migration jobs through scripts, batch files and schedulers according to needs and organizational timetables. To run the exporter in batch mode you will need exporter specification file explained in the 'Choose Destination Folder' step of the export wizard. The file contains all the export option details including:

- Source ECM connectivity information (Server Address, Username, Password etc.)

- Items to export
- Destination and Log Folder
- Filter
- Exporter specific options

This file can be edited to suit your needs however the XML schema of the file should not be altered. It is recommended that you generate a sample specifications file in the *Error! Reference source not found.* selection step of the export wizard and use it as a template to create your own specification file.

Once the specification file is ready, you can run the exporter from command line using command:

### Usage

Field	Description
-r	Outputs export results into an XML file [Optional]
-s	XML file containing export specifications

### For example:

```
C:\User\Administrator> "C:\Program Files (x86)\Tsunami\Deployer
4.0\Exporters\Confluence \TsunamiExporter.exe" -s "D:\Spec Files\specs1.xml"
```

```
C:\Program Files (x86)\Tsunami\Deployer 4.0\Exporters\Confluence> TsunamiExporter.exe -
s "D:\Spec Files\specs1.xml"
```

Based on your needs you can create number of specification files and use them to run multiple export sessions as batch commands.



You will need to provide absolute path for **TsunamiExporter.exe** and **ExportSpecificationsFile** in the command if you are not running the command from the exporter installation directory.

In Microsoft Windows 10, Windows 8, Windows 7, Windows Vista and Windows Server 2003/2008/2012 environment, if UAC (User Access Control) is enabled, Users with low privileges sometimes cannot export ECM contents. To export contents using command line, User must run with elevated or administrative privileges.

To export contents with elevated or administrative privileges, you can run the exporter from command line using command:

```
RUNAS /trustlevel:"Unrestricted" "<ExporterInstallationDirectory>\TsunamiExporter.exe"
-s "<Spec file path>\Specfilename.xml "
```



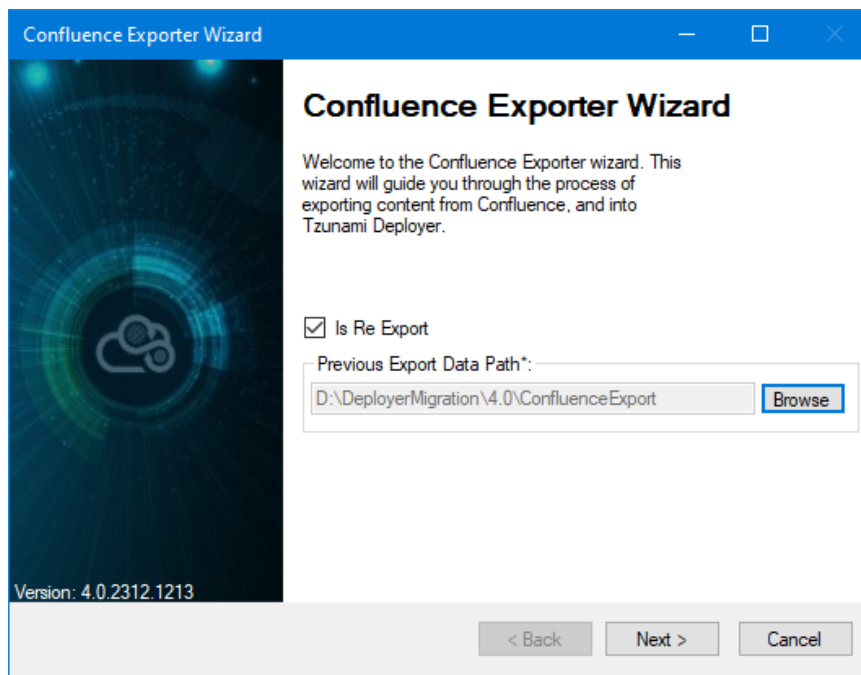
**For example:**

```
RUNAS /trustlevel:"Unrestricted" "C:\Program Files (x86)\Tsunami\Deployer  
4.0\Exporters\Confluence\TsunamiExporter.exe" -s "D:\Spec Files\specs1.xml".
```

## 2.4 RE-EXPORT

Tsunami Exporter for Confluence provides the re-export feature. Re-export feature is applicable for previous export project having errors. When an export project has some failed items with errors that can be re-ran with this feature. At this time, the only the items having errors are processed so that user does not re-export all items included in the export project again. Perform the following steps to run the re-export for export project having errors:

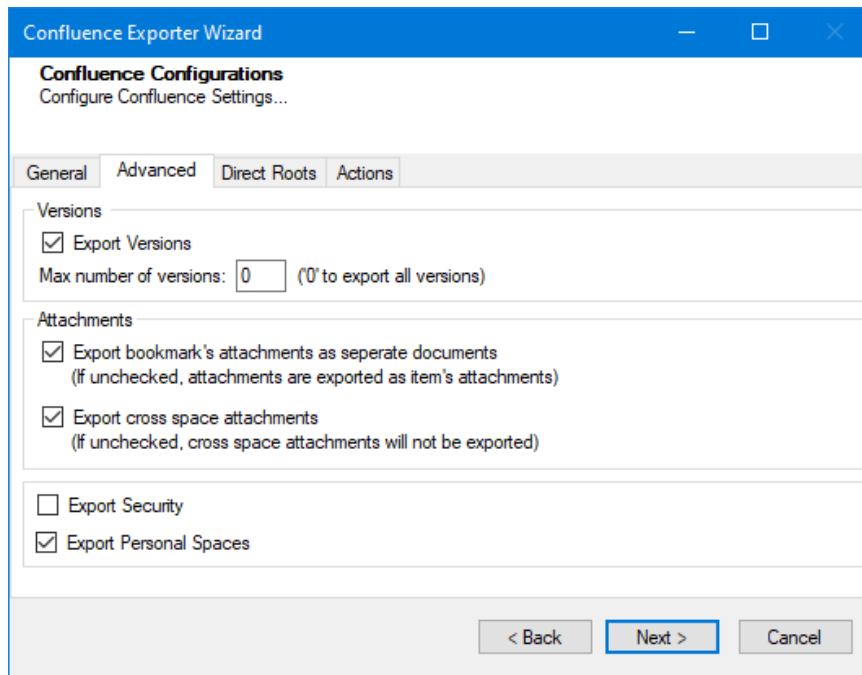
1. Run the Tsunami Confluence Exporter.
2. In the **Confluence Export Wizard** window, check **Is Re-Export** option. Then, browse the previous project location directory by clicking on **Browse** button.



**Figure 2-12 Re-Export Window**

Then, click on **Next** button.

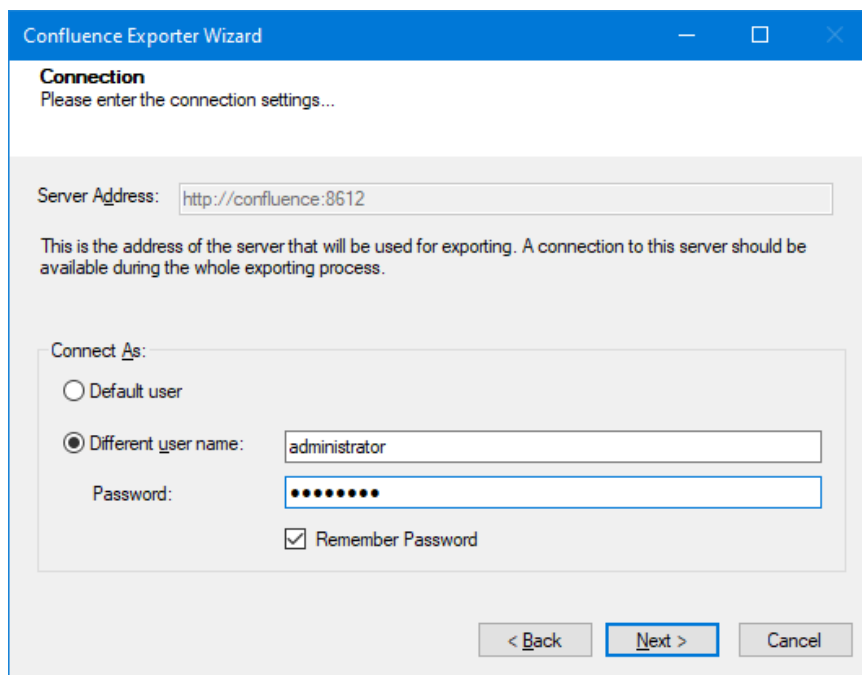
3. In **Confluence Configuration** window, you can set the parameters in **General**, **Advanced**, **Direct Roots** and **Actions** tabs as used previously.



**Figure 2-13 Confluence Configurations Window**

Click on **Next** button.

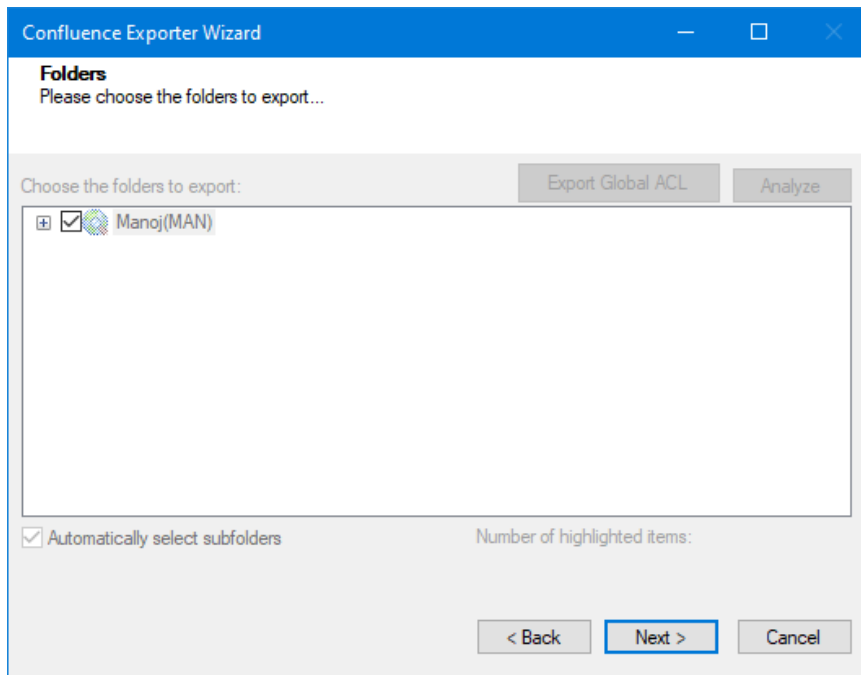
4. In **Connection** window, enter the server address and credential.



**Figure 2-14 Connection Window**

Click on **Next** button.

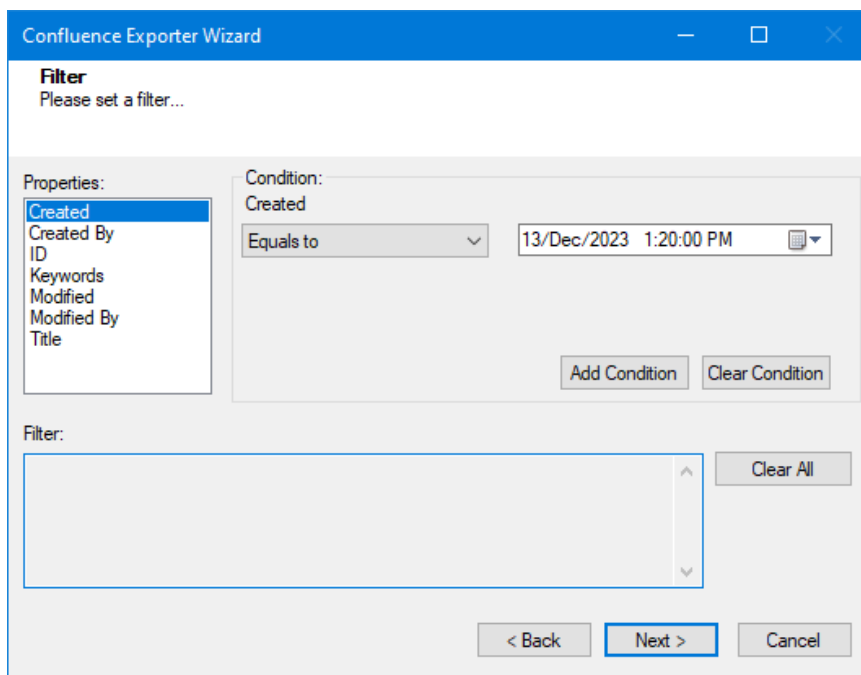
5. In **Folder** window, previously selected folders are available in default. User cannot change the folders to export and displayed as greyed-out.



**Figure 2-15 Folders Window**

Click on **Next** button.

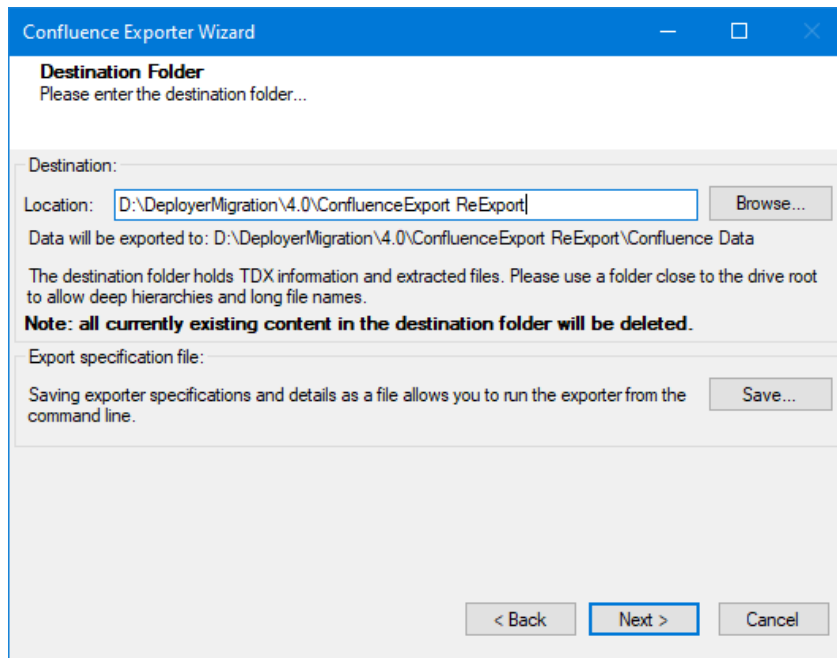
6. In **Filter** window. Filter conditions are displayed.



**Figure 2-16 Filter Window**

Click on **Next** button.

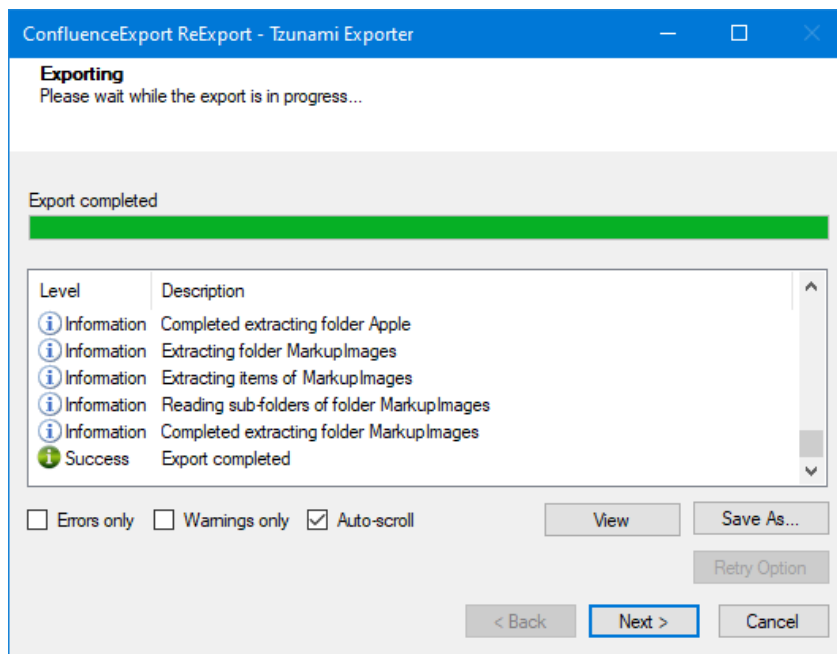
7. In **Destination Folder** window, provide the directory location for re-export.



**Figure 2-17 Destination Folder Window**

Click on **Next** button. Accept the confirmation to created destination folder when presented.

8. In **Exporting** window, the status of the export process is displayed. The export procedure is finished, and a success status is shown.



**Figure 2-18 Exporting Window**

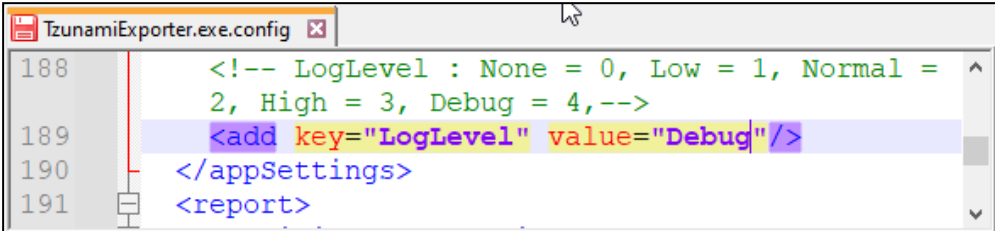
Click on **Next** button. Then, click on **Done** button in the **Thank You** window. The re-exported data are available in provided destination directory with all other relevant files. User can load the re-exported data from the Deployer migration project.

## 2.5 LOGGING SETTINGS

In Tsunami Exporter, log is written in a persistent medium having as much information as possible about events that occur while the software runs. That information plays a vital role while diagnosing if any issue occurs during the export process. Hence, it is worth mentioning that logger writes each and every details during.

Tsunami Inc provides the settings for writing logs. There are the following log levels that the user can change before running the tool.

1. Go to installation directory of the exporter and open **TsunamiExporter.exe.config** file in an editor.
2. Locate the key and set corresponding values as mentioned below:
  - **LogLevel:** Set the esteem to “Debug” or “High” or “Normal” or “low” or “none”.



```
188 <!-- LogLevel : None = 0, Low = 1, Normal =
189 <add key="LogLevel" value="Debug"/>
190 </appSettings>
191 </report>
```

**Figure 2-19 Log level Settings**

- **Debug:** Writes logs as much as possible. So, this setting includes the maximum level of verbosity. By default, the tool is packaged with this setting.
- **High:** Writes logs as much as possible for warnings and errors. However, it will not log possible diagnostic information.
- **Normal:** Writes logs for anticipated errors and warnings.
- **Low:** Critical errors are logged. There will be as low as possible information logged.
- **None:** No such logs are written.

3. Save the file. Then run the exporter.

## 2.6 BEST PRACTICES

Due to the technological differences between Confluence and SharePoint, the following best practices should be taken into consideration:

- Migrate folders to their relative list types, based on the items in those folders:

**Table 2-7: Target Structure Guidelines**

<b>Confluence Item Type</b>	<b>Relevant SharePoint Types</b>
Space	Site
Personal Space	My Site Collection
Pages	Wiki Page Library
Blogs/News	Blog Posts
Blog Comments	Blog Comments
Bookmarks	Link Lists
Comments	Discussion List
Attachments	Document Library

- The Confluence Spaces contain the User ACLs. All the child folders and items inherit security from it. If Confluence Spaces is not extracted as a root folder, the selected child folders of Confluence Spaces contain the User ACL and child items inherit security.
- To export security, the user must have Confluence Administrator Permissions.

# 3 COPYRIGHT AND TRADEMARK

© Copyright 2024. Tsunami Inc. All rights reserved.

All intellectual property rights in this publication are owned by Tsunami, Inc. and protected by United States copyright laws, other applicable copyright laws and international treaty provisions. Tsunami, Inc. retains all rights not expressly granted. No part of this publication may be reproduced in any form whatsoever or used to make any derivative work without prior written approval by Tsunami, Inc.

No representation of warranties for fitness for any purpose other than what is specifically stated in this guide is made either by Tsunami, Inc. or by its agents.

Tsunami, Inc. reserves the right to revise this publication, and/or make improvements or changes in the product(s) and/or the program(s) described in this documentation at any time without prior notice.

Any software on removable media described in this publication is furnished under a license agreement included with the product as a separate document. If you are unable to locate a copy, please contact Tsunami, Inc. and a copy will be forwarded to you.

Tsunami is either a registered trademark or a trademark of Tsunami, Inc. in the United States and/or other countries.

All other brand or product names are trademarks or registered trademarks of their respective companies.

For further information, you can contact Tsunami Inc. at:

Tsunami Inc.

601 108th Avenue, NE

Suite 1900

Bellevue, WA 98004, USA

Email: [sales@tsunami.com](mailto:sales@tsunami.com), [support@tsunami.com](mailto:support@tsunami.com)

Web: <http://www.tsunami.com>