



Tsunami Deployer

AquaLogic Exporter Guide

Supports extraction of Web Components on the server and guides migration to Microsoft SharePoint.

Version 4.0
Last Updated: January 25, 2024

Table of Content

PREFACE	IV
INTENDED AUDIENCE.....	IV
CONVENTIONS	IV
TECHNICAL SUPPORT.....	V
COMMENTS AND SUGGESTIONS	V
1 INSTALLING TZUNAMI AQUALOGIC EXPORTER	1-1
1.1 SYSTEM REQUIREMENTS.....	1-2
1.2 INSTALLING TZUNAMI AQUALOGIC EXPORTER.....	1-3
1.3 CONFIGURATION OF TZUNAMI SERVICE SETTINGS.....	1-5
1.4 POST INSTALLATION STEPS.....	1-6
1.5 UNINSTALL TZUNAMI AQUALOGIC EXPORTER	1-8
1.5.1 Uninstallation using Installer	1-8
1.5.2 Uninstallation using Control Panel.....	1-9
2 TZUNAMI AQUALOGIC EXPORTER.....	2-10
2.1 OVERVIEW.....	2-11
2.1.1 Supported Types	2-11
2.1.2 Security	2-12
2.2 EXPORTING FROM AQUALOGIC.....	2-12
2.3 COMMAND-LINE EXPORT.....	2-23
2.4 LOGGING SETTINGS.....	2-25
2.5 BEST PRACTICES.....	2-26
3 APPENDICES.....	3-27
3.1 APPENDIX A - AQUALOGIC 6.5 WITH SQL	3-27
3.2 APPENDIX B - AQUALOGIC 6.5 WITH ORACLE.....	3-31
3.3 APPENDIX C - AQUALOGIC 6 WITH SQL	3-33
3.4 APPENDIX D - AQUALOGIC 6 WITH ORACLE	3-36
3.5 APPENDIX E - AQUALOGIC 5 WITH SQL.....	3-38
3.6 APPENDIX F - AQUALOGIC 5 WITH ORACLE.....	3-40
4 COPYRIGHT AND TRADEMARK.....	4-42

List of Tables

Table 1-1: System Requirements	1-2
Table 2-1: AquaLogic Configurations, Projects Tab – Description of Fields.....	2-13
Table 2-2: AquaLogic Configurations, Directory Tab – Description of Fields.....	2-15
Table 2-3: AquaLogic v5.x Configurations, Database Tab – Description of Fields	2-15
Table 2-4: AquaLogic v6.x Configurations, Database Tab – Description of Fields	2-16
Table 2-5: AquaLogic Configurations, Actions Tab - Description of fields	2-18
Table 2-6 Analyzer Information Description.....	2-20
Table 2-7: Target Structure Guidelines	2-26

List of Figures

Figure 1-1: Testing Oracle Service – Net Manager	1-2
Figure 1-2: Welcome Window	1-3
Figure 1-3: End-User License Agreement Window	1-3
Figure 1-4: Custom Setup Window	1-4
Figure 1-5: Installing Tsunami AquaLogic Exporter Window	1-4
Figure 1-6: Installation Complete Window	1-5
Figure 1-7 Deployer Settings Manager	1-5
Figure 2-1: AquaLogic Configurations Screen – Projects Tab	2-13
Figure 2-2: AquaLogic Configurations Screen – Directory Tab	2-14
Figure 2-3: AquaLogic v5.x Configurations Screen – Database Tab.....	2-15
Figure 2-4: AquaLogic v6.x Configurations Screen – Database Tab.....	2-16
Figure 2-5: AquaLogic Configurations Screen – Actions Tab	2-18
Figure 2-6: Connection Screen.....	2-19
Figure 2-7 Analyze Option.....	2-19
Figure 2-8 Analyzer Information	2-20
Figure 2-9: Folder Selection Screen	2-20
Figure 2-10: Filter Screen.....	2-21
Figure 2-11: Destination Folder Screen	2-22
Figure 2-12: Exporter Progress Screen.....	2-23
Figure 2-13 Log level Settings	2-25

PREFACE

This guide provides installation procedures for Tsunami AquaLogic Exporter and detail steps to extract contents from AquaLogic using Tsunami AquaLogic Exporter. The guide also describes how to extract contents non-interactive way using command-line instructions and best practice.

This preface contains the following topics.

- Intended Audience
- Conventions
- Technical Support
- Comments and Suggestions

INTENDED AUDIENCE

Tsunami AquaLogic Guide is intended for:

- System Administrators who are responsible for exporting AquaLogic contents and setting migration environment using Tsunami Deployer.
- Project Managers and IT Managers who create and regulate usage of Tsunami Deployer and Tsunami AquaLogic Exporter.

CONVENTIONS

The following text conventions are used in this document:

- Commands and keywords are given in **boldface**
- Terminal sessions, console screens, or system file names are displayed in `fixed width fonts`



Caution indicates that the described action might result in program malfunction or data loss.



Notes contain helpful suggestions about or references to materials not contained in this manual.



Tips provide information that might help you solve a problem.

TECHNICAL SUPPORT

Before contacting Tsunami Support team, ensure that you are referencing the latest copy of this user guide (Ctrl+Click to follow link) [Tsunami Deployer AquaLogic Exporter Guide](#).

For additional information, please contact Tsunami Support Team at support@tsunami.com

COMMENTS AND SUGGESTIONS

Your feedback is important to us and will help us to provide the most accurate and high quality information possible in our documentation. Send us comments or suggestions by email to support@tsunami.com. Be sure to include as much of the following as possible:

- The document title.
- The location that the document was accessed from (either downloaded from Tsunami web site or the Tsunami Deployer User Guide and Tsunami AquaLogic Exporter Guide available in Tsunami Deployer).
- The section or chapter number and the original text found in the document.



When you send information to Tsunami Deployer, you grant Tsunami a non-exclusive right to use or distribute the information in any way it believes appropriate without incurring any obligation to you.

1 INSTALLING TZUNAMI AQUALOGIC EXPORTER

This chapter contains information about installing Tzunami AquaLogic Exporter. It contains the following topics:

- *System Requirements*
- *Installing Tzunami AquaLogic Exporter*
- *Uninstall Tzunami AquaLogic Exporter*

1.1 SYSTEM REQUIREMENTS

The following table lists the system requirements for Tsunami Deployer AquaLogic Exporter.

Table 1-1: System Requirements

Components	Minimum Requirements
Computer and processor	2GHz Pentium processor or equivalent
Memory	2 GB (Minimum); 4GB (Recommended)
Hard disk	50Mb (additional space will be required for the Tsunami Deployer projects, which may vary from 10 Mb to 4 GB).
Supported Operating System	Windows Server 2000/2003/2008/2012, Windows XP, Windows Vista, Windows 7, Windows 8 & Windows 10
Supported Architectures	x86 and x64
Network	Intranet/Internet access depending on connectivity requirements
Display	800 x 600, 256 colors (minimum); 1024 x 768 high color, 32-bit (recommended)
Microsoft .NET Framework	Microsoft .NET Framework 2.0



If using version 5.x of AquaLogic Server with an Oracle database, and the database server is running on a separate machine than the AquaLogic Server, Oracle Client will need to be installed on the machine where the exporter will run.

It is recommended to use the Oracle Client version same as the server version. Oracle Client can be installed from the Oracle Server software package or can be downloaded from Oracle download page

<http://www.oracle.com/technology/software/products/database/index.html> .

During the installation of the Oracle Client, the Oracle service name configured at the client should be same as the service name at the Oracle Server which AquaLogic Server is using. The properties file (PlumtreePortal_v5-0.properties) in AquaLogic installation directory can be referred to check which service name has been assigned to the AquaLogic Server. The PORTAL_DB_NAME entry in this file represents the service name. Configure and test the service using Oracle's Net Manager utility and make sure that it is successful.

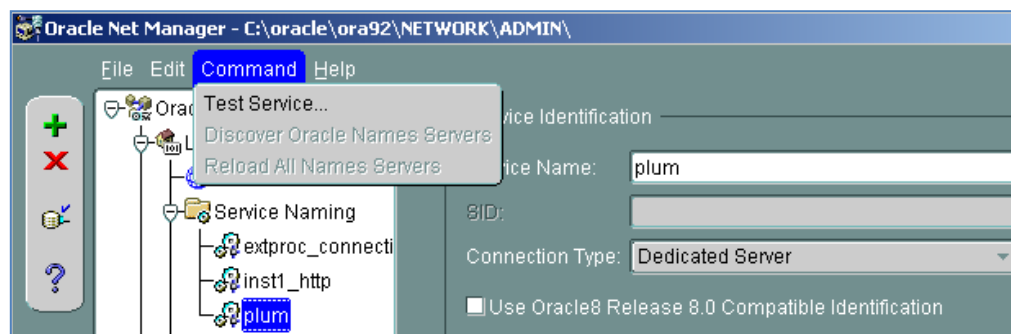


Figure 1-1: Testing Oracle Service – Net Manager

Please consult your database administrator for configuring Oracle Service to connect to the AquaLogic Server database. For questions, contact the Tsunami Support Team at: support@tsunami.com

1.2 INSTALLING TZUNAMI AQUALOGIC EXPORTER

You must install Tzunami AquaLogic Exporter on the AquaLogic Application Server.

To install Tzunami AquaLogic Exporter:

1. Unzip the zip file, and run TzunamiAquaLogicExporter.msi. The Tzunami AquaLogic Exporter Setup Wizard (Welcome window) will launch. To advance through the install wizard, click **Next** on the bottom of the window.

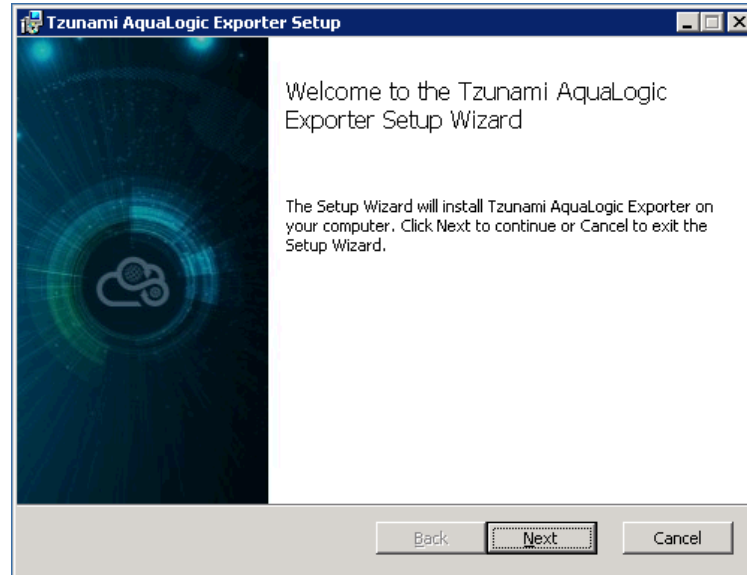


Figure 1-2: Welcome Window

2. In the End-User Licensing Agreement panel, click **"I accept the terms in the License Agreement"** and click **Next** to continue installation.

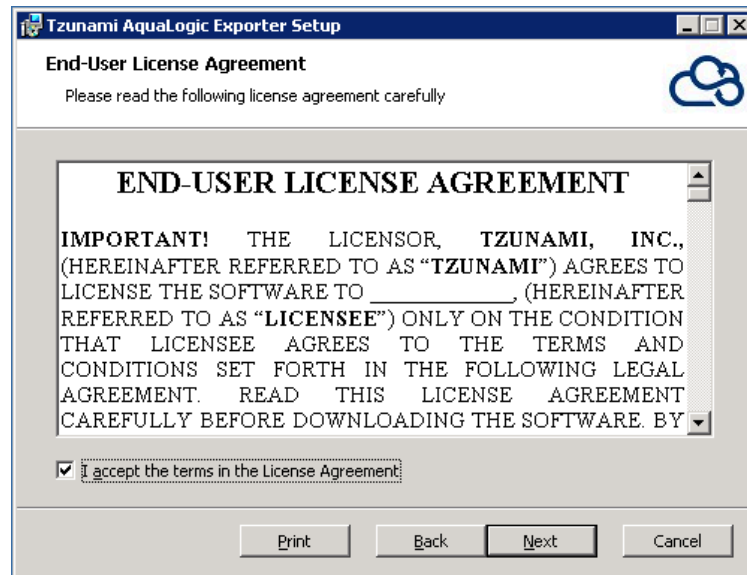


Figure 1-3: End-User License Agreement Window



You are advised to read the terms of the license carefully before proceeding with the installation. If you decline the license terms, the installation cannot proceed.

3. In the Custom Setup panel, do one of the following:
 - To accept the default Destination Folder, click **Next**.
 - Click **Browse**, locate and select a destination folder, click **OK**, and then click **Next**.

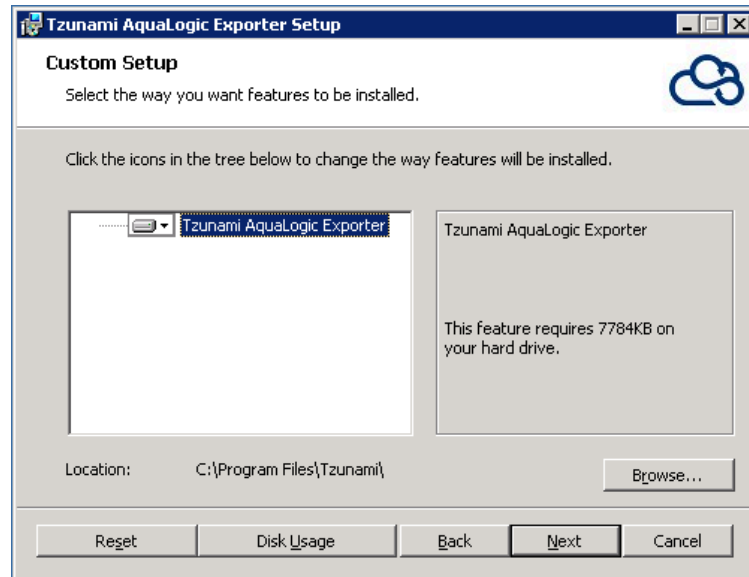


Figure 1-4: Custom Setup Window

4. In the Ready to install Tsunami AquaLogic Exporter panel, click **Install**.

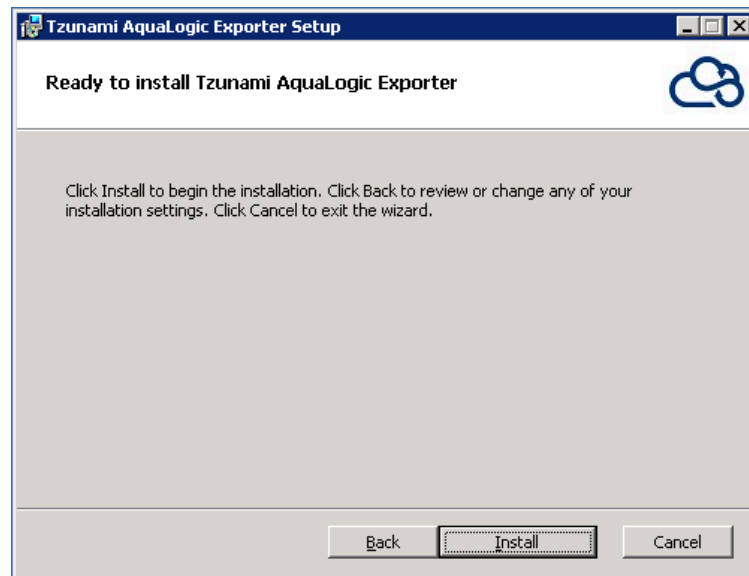


Figure 1-5: Installing Tsunami AquaLogic Exporter Window

5. In the Completed Tsunami AquaLogic Exporter Setup Wizard, to exit the wizard, click **Close**.

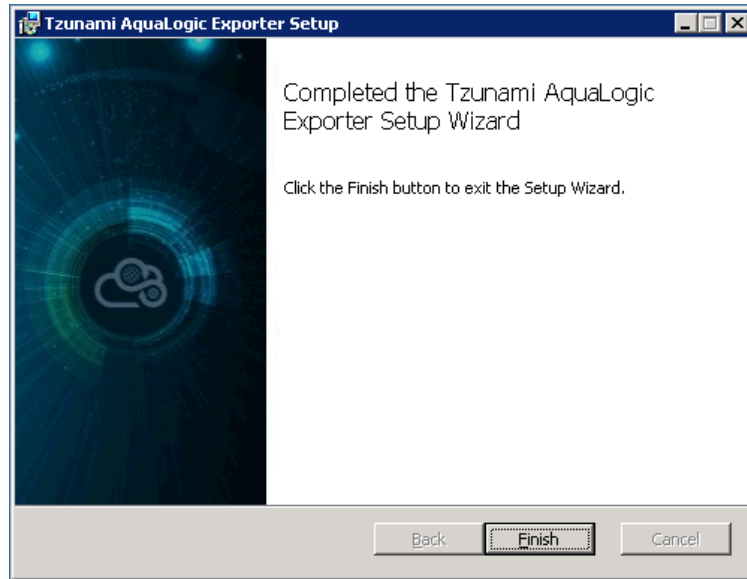


Figure 1-6: Installation Complete Window



When Tsunami AquaLogic Exporter is installed, it comes with a default license that can be used for evaluation purpose only. This license is limited in time and number of operations.

1.3 CONFIGURATION OF TZUNAMI SERVICE SETTINGS

1. When installing **Tsunami Deployer/Exporter/Remote Service** for the first time, a **Tsunami Service Settings** dialog is displayed. In **Tsunami Service Settings**, the Licensing Service, Link Resolver Service and O365 AD Service are pointed to localhost (same machine).

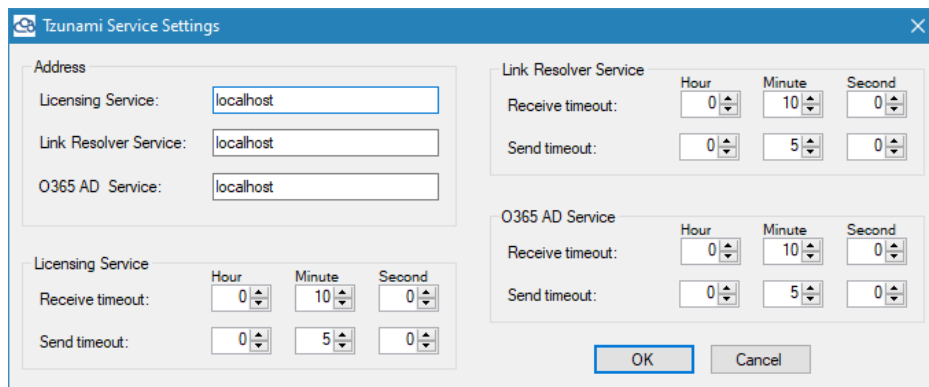


Figure 1-7 Deployer Settings Manager



User can run the **Settings Manager.exe** application from the installation directory to display this service settings dialog at any time and updated the settings to point the Tsunami services as required.

In case of Remote Service installation, restart the Tsunami Remote Service after updating the Tsunami Service Settings.

If these services are installed in other machine, point to that machine with machine name or IP Address.

2. Click on **OK**.

1.4 POST INSTALLATION STEPS



This is needed only for version 6.x of AquaLogic Server.

This step grants SELECT permissions on Collab/Publisher tables to the portal database user.

This can be performed manually using the steps below or Exporter can perform this automatically for you. For more information, see **Table 2-4** on page **2-16**.

For Collaboration table:

If the AquaLogic Server has Collaboration component and you wish to export its contents or the contents published from Collaboration and/or Content Server to the Knowledge Directory, the Portal database user should be given the SELECT permission on specific tables in the Collaboration database. This should be done using the database scripts supplied with the setup, or manually by the database administrator. Separate scripts are provided for Collaboration table and Publishing table for Oracle Server and SQL Server.

Follow these steps to run this script to grant SELECT permissions on *Collaboration table* to portal database user on **Oracle Server**:

1. Copy the script *Oracle_Grant_Select_OnCollabTables_ToPortalUser.sql* to a directory in the Oracle Server machine hosting AquaLogic database or on a machine having Oracle client.
2. Open a command prompt window (**Start > Run**, type “cmd” and press **Enter**).
3. Switch to the directory containing the DB script copied in step 1.
4. Log in to Oracle with the collaboration database user credential by running the command.

```
sqlplus <collaboration DB user>/<collaboration user password>@<Portal SID>
```

<Portal SID> is the Oracle service name assigned to AquaLogic Server database.
5. You should receive the SQL prompt.
6. Execute the script by typing command
7. `@Oracle_Grant_Select_OnCollabTables_ToPortalUser.sql`
8. Enter Portal database user name when prompted and press Enter. The script should be executed successfully.

Follow these steps to run this script to grant SELECT permissions on Collaboration table to portal database user on **SQL Server**:

1. Copy the script *SQLServer_Grant_Select_OnCollabTables_ToPortalUser.sql* to a directory in the SQL Server machine hosting AquaLogic database or on a machine having SQL Server client.
2. Open the script in notepad and change the **portalusername** value (*portaluser*) in line `'SELECT @portalusername = 'portaluser''` to the portal database user created during installation.
3. Start Query Analyzer tool as the collaboration database user. Make sure that the collaboration database is shown in the database dropdown.
4. Browse to the directory containing the script copied in step1, and open the file.
5. Execute the script and make sure that it is successfully executed.

For Publisher table:

Similarly if the AquaLogic Server has Publisher (Content Server) component and you wish to export the contents published from the Publisher to the Knowledge Directory, the Portal database user should be given SELECT permission on specific tables in the Publisher database. Please note that this version of exporter can only export Publisher components published to the Knowledge Directory.

Follow these steps to run this script to grant SELECT permissions on *Publisher table* to portal database user on **Oracle Server**:

1. Copy the script *Oracle_Grant_Select_OnPublisherTable_ToPortalUser.sql* to a directory in the Oracle Server machine hosting Publisher database or on a machine having Oracle client..
2. Open a command prompt window (**Start → Run**, type “cmd” and press **Enter**).
3. Switch to the directory containing the DB script copied in step 1.
4. Log in to Oracle with the System database user credential by running the command:

```
sqlplus system/<system user password>@<Publisher SID>
```

<Publisher SID> is the Oracle service name assigned to Publisher database.

5. You should receive the SQL prompt.
6. Execute the script by typing command:
@Oracle_Grant_Select_OnPublisherTable_ToPortalUser.sql
7. Enter Portal database name, Portal database user name, Publisher database user name and password when prompted and press Enter. The script should be executed successfully.

Follow these steps to run this script to grant SELECT permissions on *Publisher tables* to portal database user on **SQL Server**:

1. Copy the script `SQLServer_Grant_Select_OnPublisherTable_ToPortalUser.sql` to a directory in the SQL Server machine hosting Publisher database or on a machine having SQL Server client.
2. Open the script in notepad and change portaluser in line `exec sp_grantdbaccess 'portaluser'` to your portal database user name.
3. Start Query Analyzer as Publisher database user. Make sure that the publisher database is shown in the database dropdown.
4. Browse to the directory containing the script copied in step1, and open the file.
5. Execute the script and make sure that it is successfully executed.
6. Please consult your database administrator prior to performing any changes to the AquaLogic server. For questions, contact the Tsunami Support Team at support@tsunami.com



The SQL Scripts for comes with the **Tsunami AquaLogic Exporter Setup**. By default, SQL Scripts for the *Collaboration table* and *Publisher table* is located at “C:\Program Files\Tsunami\Deployer 4.0\Exporters\AquaLogic\SQL Scripts”, or where **Tsunami AquaLogic Exporter** is installed.

1.5 UNINSTALL TZUNAMI AQUALOGIC EXPORTER

This section of the guide illustrates different ways to remove or uninstall Tsunami AquaLogic Exporter from your AquaLogic Server. Here are the two different ways to uninstall Tsunami AquaLogic Exporters:

- Uninstallation using Installer
- Uninstallation using Control Panel

To uninstall Tsunami AquaLogic Exporter, user needs to be a Local Administrator in the AquaLogic Exporter installed machine. Uninstalling Tsunami AquaLogic Exporter is simple and easy. You can remove or uninstall it in no time. You don't need to reboot your computer once the uninstalling process is complete.



Log files, licensing information files etc. will remain after uninstalling Tsunami AquaLogic Exporter. You can manually delete those files from your computer if needed. By default logs are located at the “C:\Program Files\Tsunami\Deployer 4.0\Exporter\Logs”, or where Tsunami AquaLogic Exporter is installed. Tsunami AquaLogic Exporter Options information will be available in “C:\Documents and Settings\All users\Application Data\Local\Tsunami” location.

1.5.1 Uninstallation using Installer

To uninstall Tsunami AquaLogic Exporter using Installer

1. Close **Tsunami AquaLogic Exporter**.

2. Unzip the zip file, and run `TsunamiAquaLogicExporter.msi`. The Tsunami AquaLogic setup wizard (Welcome window) will launch. To advance through the remove installation wizard, click “**Next**” at the bottom of the screen.
3. In the Change, repair or remove installation panel, click “**Remove**” button to proceed to remove Tsunami AquaLogic Exporter from your computer.
4. In the Ready to remove Tsunami AquaLogic Exporter panel, click “**Remove**” to remove Tsunami AquaLogic Exporter from your computer.
5. Click **Finish** to exit the setup wizard.



You can right-click Tsunami AquaLogic Exporter setup (`TsunamiAquaLogicExporter.msi`) file and select **Uninstall** to remove or uninstall Tsunami AquaLogic Exporter from your computer.

1.5.2 Uninstallation using Control Panel

To uninstall Tsunami AquaLogic Exporter using Control Panel

1. Close **Tsunami AquaLogic Exporter**.
2. Click **Start > Control Panel > Add or Remove Programs**.
3. In Add or Remove Programs window, right-click the Tsunami AquaLogic Exporter application you want to remove, and then click **Uninstall**.

2 TZUNAMI AQUALOGIC EXPORTER

This chapter contains information of Tzunami AquaLogic Exporter. It contains the following topics:

- *Overview*
- *Exporting from AquaLogic*
- *Command-line Export*
- *Logging settings*
- *Best Practices*

2.1 OVERVIEW

Tsunami AquaLogic Exporter enables migrating AquaLogic User Interaction content into SharePoint 2007, SharePoint 2010, SharePoint 2013, SharePoint 2016 or SharePoint Online using Tsunami Deployer.

To load AquaLogic content into Tsunami Deployer, you must first extract the content, using Tsunami AquaLogic Exporter, into TDX (Tsunami Deployer Export) and STDX (Separate Tsunami Deployer Export) files. You can then load this TDX file into a Deployer project.



When working with Tsunami Deployer on several machines, you can run an export on one machine and load the exported data on another.

Tsunami AquaLogic Exporter is an extension module of Tsunami Deployer. You can work with this module independently of Tsunami Deployer.

2.1.1 Supported Types

The Tsunami AquaLogic Exporter supports basically three types of content repositories:

Knowledge Directory: AquaLogic Interaction has an embedded, portal-specific document content management system called the Knowledge Directory. The Knowledge Directory includes facilities for importing and uploading existing documents, for storing, sharing, and managing them, and for helping users find them through search and navigation. The contents model for Knowledge Directory is built on content items. The content items that are exported by Tsunami AquaLogic Exporter are:

1. Documents
2. Links: these point to external or internal web contents
3. Shortcuts: these points to documents in other repositories like Collaboration Projects.
4. Published Documents
5. Content Service – Windows Files

Projects: Projects are part of a separate component Collaboration that interacts with Portal to provide tools for user interaction and work flow management. The items that are exported by AquaLogic Exporter are:

1. Folders and Documents
2. Tasks Lists and Tasks
3. Discussions and Messages
4. Calendars and Events
5. Announcements
6. Links and Shortcuts

Publisher/Content Server: Publisher is a web application that functions as a remote portlet server for AquaLogic Interactions. Publisher enables content creations, content publishing and workflow management.



Tsunami AquaLogic Exporter **does not support** extraction of contents from Publisher/Content Server. Only Published Documents in the Knowledge Directory are extracted.

2.1.2 Security

In addition to the structure and items, Tsunami AquaLogic Exporter extracts security information. The following permissions are used in the exporter:

- None
- Read
- Select
- Write
- Edit
- Admin

Each item is assigned an ACL defining the permissions of the various members according to the roles they were assigned.



The exporter automatically creates six default roles that are used during the deployment process. The roles include None (No permission), Read (Read permission), Select (Read and Select permissions), Write (Read, Select and Write permissions), Edit (Read, Select, Write and Edit permissions), and Admin (user has full permissions).

2.2 EXPORTING FROM AQUALOGIC

The Tsunami AquaLogic Exporter enables you to export BEA AquaLogic contents to a TDX file.



When exporting, keep the following in mind:

Export in small chunks: When exporting from your source system, perform the export in small chunks of about 40K-50K files each that have a common business logic or some other logic.

Ensure consistency: Make sure that the content of the different exports does not overlap and that, while exporting, no changes are made to the source data.

In order to handle the different type of AquaLogic installations and configurations, advanced settings and parameters are available in the `TsunamiExporter.exe.config` file. The file contains parameters which can be configured according to the AquaLogic setup against which the exporter needs to run. Please refer the **Appendices A-D** for the various possible setups and configurations parameter needed.

To export to a TDX file:

1. In Tsunami Deployer, right-click in the AquaLogic tab source store area and select **Export AquaLogic to TDX**.

Or

Click **Start > All Programs > Tsunami > Tsunami AquaLogic Exporter**.

The Welcome screen of the Export Wizard appears.

2. Click **Next**. The AquaLogic Configurations screen appears. Use this screen to enter the settings required for the exporter to connect to AquaLogic. The screen includes three tabs: Projects, Directory, and Database.
3. Click the **Projects** tab to configure how Projects and their contents are exported.

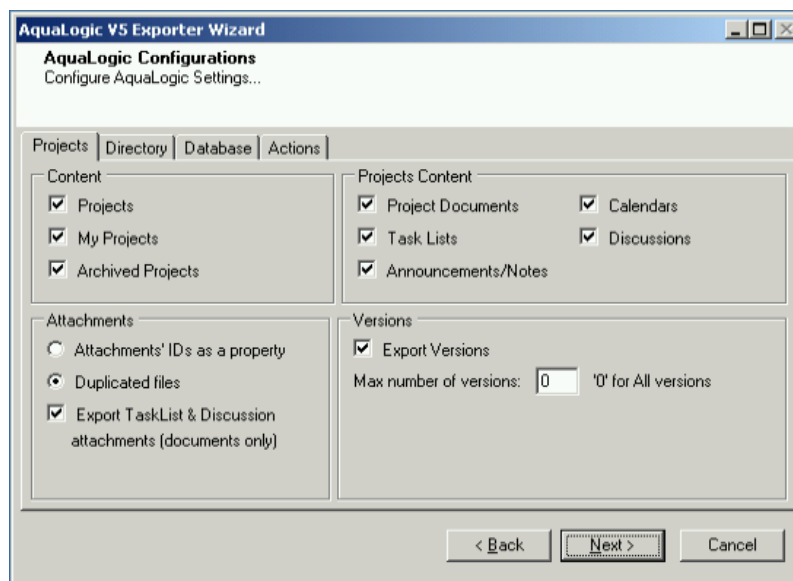






Figure 2-1: AquaLogic Configurations Screen – Projects Tab

Table 2-1: AquaLogic Configurations, Projects Tab – Description of Fields

Field	Description
Projects	
Projects	Check this option if you wish to export Projects
My Project	Check this option if you wish to export My Projects
Archived Projects	Check this option if you wish to export Archived Projects
Project Content	
Project Documents	Check this option if you wish to export documents inside Projects.
Task Lists	Check this option if you wish to export Task Lists and Tasks inside Projects.
Announcements/Notes	Check this option if you wish to export Announcements and Notes inside Projects.
Calendars	Check this option if you wish to export Calendars and Events inside Projects.
Discussions	Check this option if you wish to export Discussions, Topics and Replies inside Projects.

Field	Description
Versions	
Export Versions	<p>Check this option if you wish to export all versions of items.</p> <p> Uncheck this option, if you wish to export current versions of each item.</p>
Max number of Versions	<p>Enter the number of versions you would like to export for each item.</p> <p> Setting this value to zero will export all versions.</p> <p>If number of maximum versions is specified, number of versions from latest version are exported.</p>
Attachments	
Attachments' IDs a property	<p>Choose how to handle attachments:</p> <p>Check this option if you wish to handle Attachment IDs of items as property.</p>
Duplicated files	<p>Check this option if you wish to export duplicate attachment files.</p> <p> You can export Documents as attachments (other types of attachments will not be exported).</p> <p>The documents that are selected to be exported as both regular documents and as attachments will be duplicated. Since, SharePoint does not support attachments as a reference to another document.</p>
Export Task List & Discussion attachments (documents only)	<p>Check this option if you want to export Task List and Discussion attachments.</p> <p> You can export Documents as attachments (other types of attachments will not be exported)</p>

4. Click the **Directory** tab and configure how to handle Knowledge Directory content.

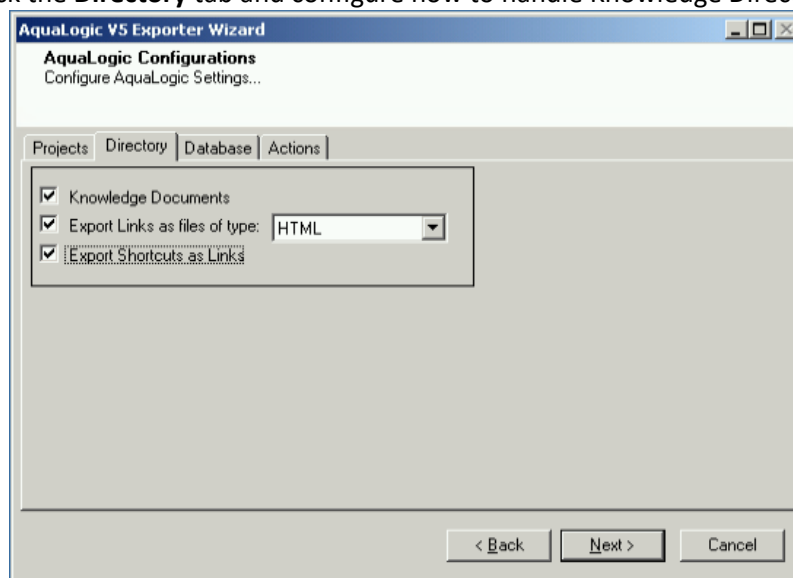


Figure 2-2: AquaLogic Configurations Screen – Directory Tab

Table 2-2: AquaLogic Configurations, Directory Tab – Description of Fields

Field	Description
Knowledge Documents	Check this option if you wish to export documents inside the Knowledge Directory folders.
Export Links as files	Check this option if you wish to export Links (Web Documents) as files. This allows the migration of the Web Documents into a SharePoint Documents Library, side-by-side with regular documents. In case of exporting Links as files, users can choose between HTML files with auto-redirection or ASPX files (which can be used with the MOSS\WSS 3.0 “Link to a Document” Content Type.
Export Shortcuts as Links	Check this option if you wish to export Document Shortcuts as links. If not checked, a copy of the original document is migrated for Shortcuts.

5. If the **AquaLogic Server is version 5.x** then, Click the **Database** tab and configure database access options as shown below:

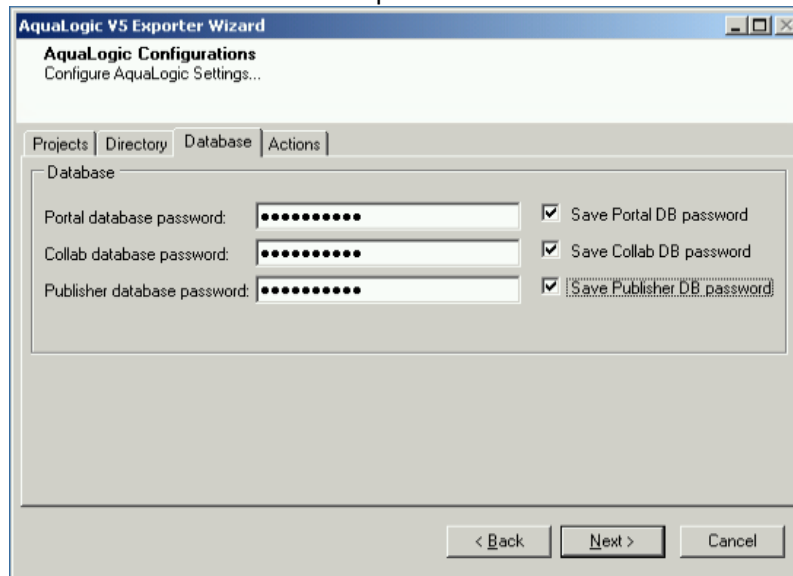


Figure 2-3: AquaLogic v5.x Configurations Screen – Database Tab

Table 2-3: AquaLogic v5.x Configurations, Database Tab – Description of Fields

Field	Description
Portal database password	Put the password for the Portal database user created during portal installation in this field.
Save Portal DB password	Check this option if you wish to save the Portal database password. If checked the database password is remembered when the exporter is run next time.
Collab database password	Put the password for the Collaboration database user created during collaboration installation in this field.
Save Collab DB password	Check this option if you wish to save the Collaboration database password. If checked the database password is remembered when the exporter is run next time.
Publisher database password	Put the password for the Publisher (or Content Server) database user created during installation in this field.

Field	Description
Save Publisher DB password	Check this option if you wish to save the Publisher database password. If checked the database password is remembered when the exporter is run next time.

If the **AquaLogic Server is version 6.x**, Click the **Database** tab and configure database access options.

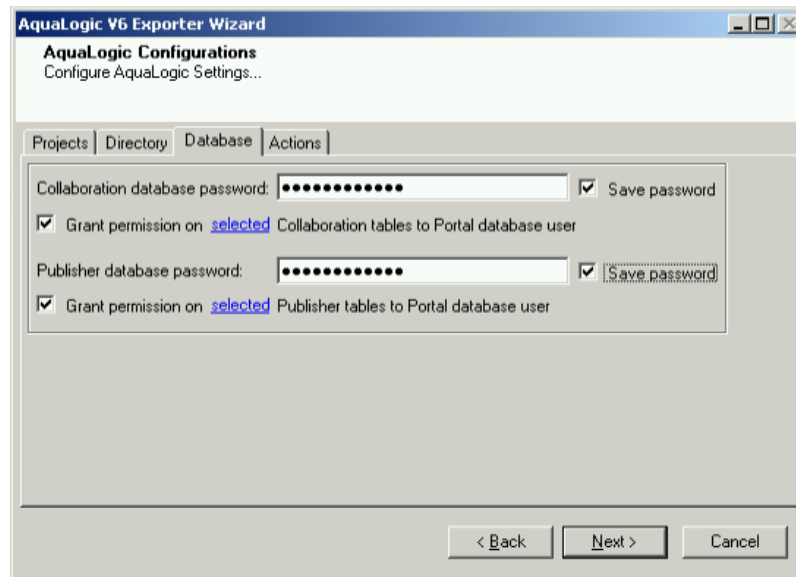





Figure 2-4: AquaLogic v6.x Configurations Screen – Database Tab

Table 2-4: AquaLogic v6.x Configurations, Database Tab – Description of Fields

Field	Description
Collaboration database password	Put the password for the Collaboration database user created during collaboration installation in this field.
Grant permission on selected Collaboration tables to Portal database user	<p>Check this option if you wish to grant required SELECT permission on Collaboration tables to Portal database user automatically. Certain configuration parameters will need to be filled up in 'TsunamiExpoter.exe.config' file, located in the exporter installation directory, as described in Appendix A and B below. Granting permission can also be done manually as described in Post Installation Steps.</p> <p>Granting SELECT permission to Portal database user on selected Collaboration database is required for extracting the contents from Collaboration.</p> <p> You can click on 'selected' link to see the list of Collaboration tables in the screen-tip for which the required permission will be granted.</p>
Save password	Check this option if you wish to save the Collaboration database password. If checked, the database password is remembered when the exporter is run next time.
Publisher database password	Put the password for the Publisher (or Content Server) database user created during installation in this field.

Field	Description
Grant permission on selected Publisher tables to Portal database user	<p>Check this option if you wish to grant required SELECT permission on Publisher tables to Portal database user automatically. Certain configuration parameters will need to be filled up in 'TsunamiExpoter.exe.config' file, located in the exporter installation directory, as described in Appendix A and B below. Granting permission can also be done manually as described in</p> <p>.</p> <p>Granting SELECT permission to Portal database user on selected Publisher database is required for extracting the documents published to Knowledge Directory from Publisher.</p> <p> You can click on 'selected' link to see the list of Publisher table(s) in the screen-tip for which the required permission will be granted.</p>
Save password	<p>Check this option if you wish to save the Publisher database password. If checked, the database password is remembered when the exporter is run next time.</p> <p> Portal database password is needed (in AquaLogic v5.x) for exporting Knowledge Directory contents.</p> <p>Collaboration database password is needed for exporting Collaboration contents and documents published to Knowledge Directory from Collaboration.</p> <p>Publisher database password is needed for exporting documents published to Knowledge Directory from Publisher.</p> <p>A message will prompt if the DB password is missing or incorrect. You can choose to ignore and proceed with the export but an error message will prompt if you try to export the component for which correct password was not supplied.</p>

6. Click on **Actions** Tab

The **Actions** tab allows you to use different actions that can be taken in the exporter.

- **Auto Pause:** The export process is paused and resumed using this functionality at a set time each day. The feature can be turned on or off using the **Use Auto Pause** check box. The feature can be checked by the user, who can also select the pause and resume times. The user can deselect it to turn off the feature.

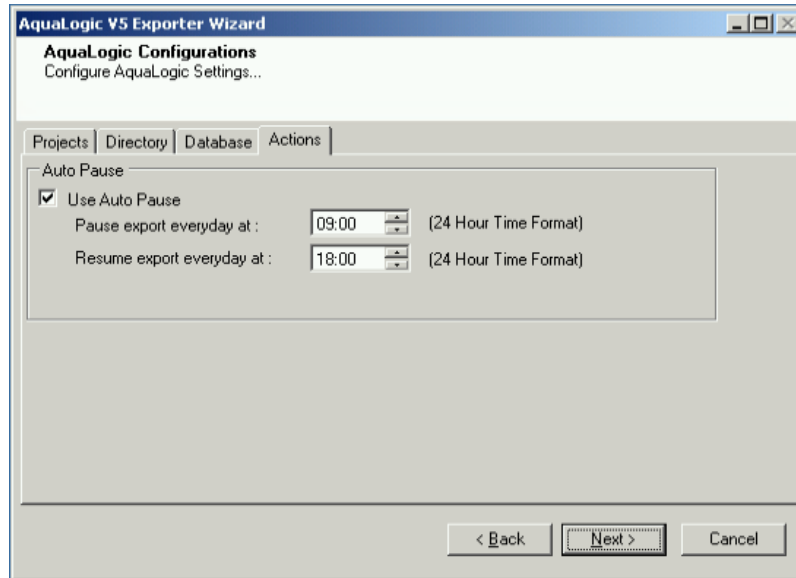


Figure 2-5: AquaLogic Configurations Screen – Actions Tab

Table 2-5: AquaLogic Configurations, Actions Tab - Description of fields

Field	Description
Auto Pause	
Use Auto Pause	To use the auto-pause and resume feature, select this option. To turn off this function, uncheck this box.
Pause export every day at	Set the daily time that the export process should pause.
Resume export every day at	Set the daily time for restarting the interrupted export operation.

The settings for actions are only applied to this exporter instance that is currently executing when the user clicks the **Next** button.

- Click **Next**. The Connection screen appears. You need to provide the required portal credential to connect to the AquaLogic server. If your AquaLogic server supports user authentication from an external source (like LDAP) other than ALUI database, and you want to use this user for connection, you need to provide username in the format: `<Authentication Source Category>\<username>` **i.e.** by providing the Authentication Source Category followed by the username.

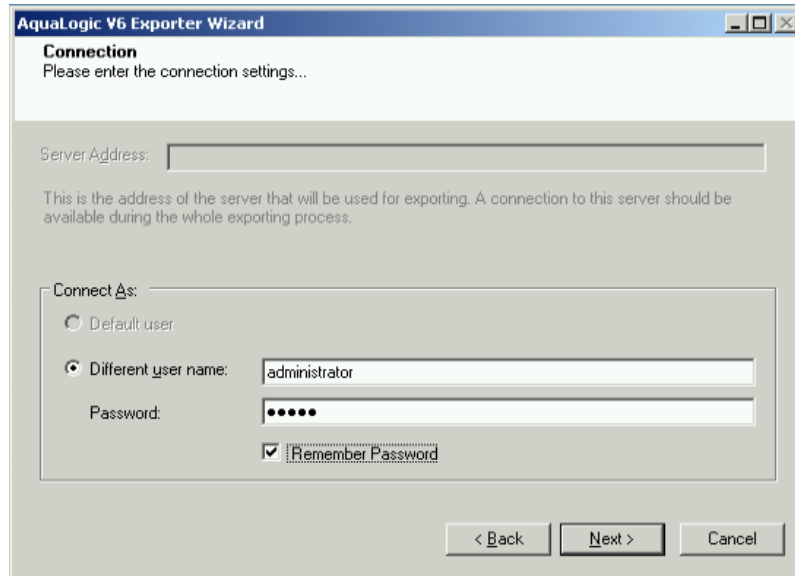


Figure 2-6: Connection Screen

Authentication source category is not required if the user is in local ALUI database.

8. Click **Next**. The Folders screen appears.

Tsunami Exporter provides quick analysis option before exporting to know the size, count of contents inside selected folder.

If you want to analyze the content: Check on the Folder(s) in tree view, then **Analyze** button is enabled. Click **Analyze**.

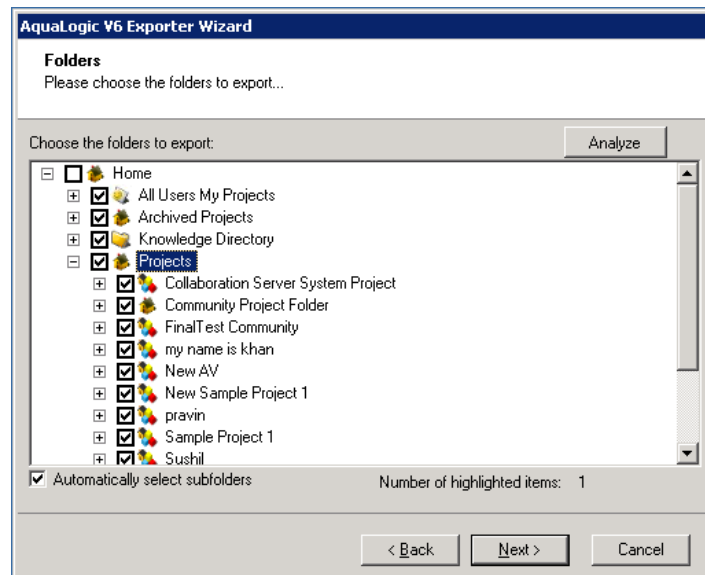


Figure 2-7 Analyze Option

Analyzer screen appears. Analyzer screen provides the detail information that helps to plan for the export (chunk size) based on File size and number of items.

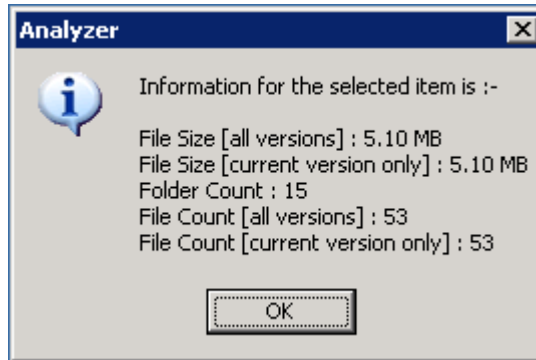


Figure 2-8 Analyzer Information

Table 2-6 Analyzer Information Description

Field	Description
File Size [all versions]	Provides the total size of files for all versions of documents.
File Size [current version only]	Provides the total size of files for current version of documents.
Folder Count	Provides the number of folders.
File Count [all versions]	Provides the total number of files for all versions of documents.
File Count [current version only]	Provides the total number of files for current versions of documents.
Data Item Count	Provides the total number of data item.

9. Select the folders to export.

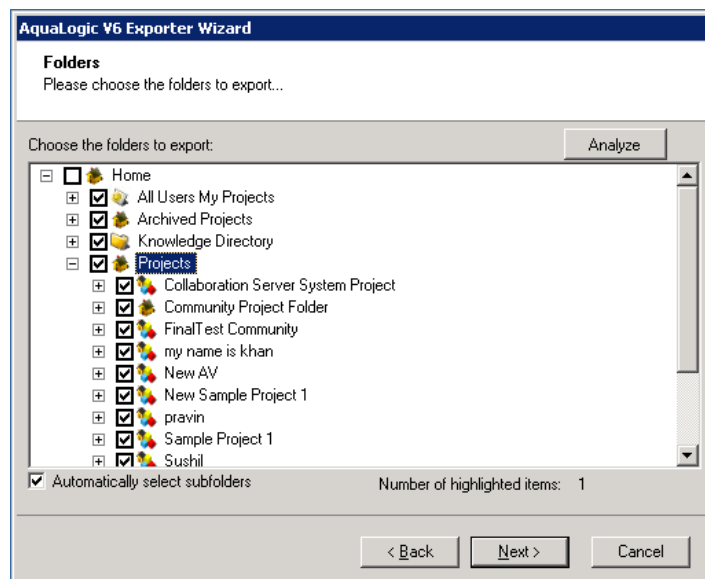


Figure 2-9: Folder Selection Screen



You can select all subfolders of a selected folder by checking Automatically select subfolders.

10. Click **Next**. The Filter screen appears.

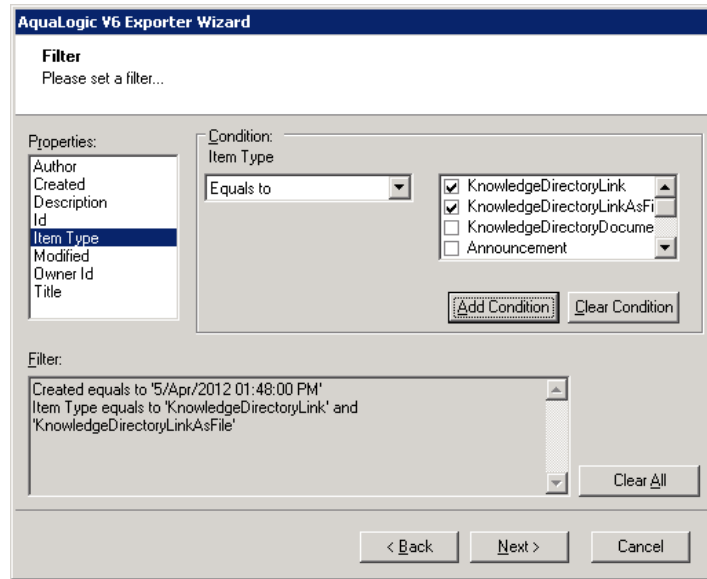


Figure 2-10: Filter Screen

11. Set up filtering as follows:

- a. In the Properties field, select a property.
- b. In the Condition field, select a condition from the drop down list and enter or select values in the corresponding field.
- c. Click **Add Condition**. The condition is added to the Filter area, displaying the full filter expression.



You can only add one condition per property.

You can edit a condition for a property by selecting the property and modifying the condition type or values that are currently assigned to it.

You can remove a condition from a property or all the conditions from all the properties by clicking Clear Condition or Clear All, respectively.

This option works only for Data Items.

If multiple conditions are applied, only items that match all conditions are exported.

12. Click **Next**. The Destination Folder screen appears.

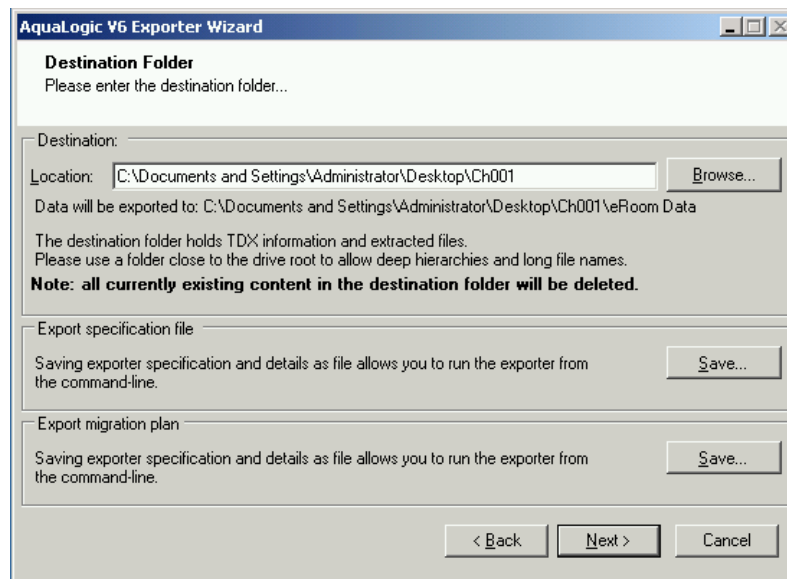


Figure 2-11: Destination Folder Screen

Specify where to export the files and generated TDX information. Make sure you are saving to a folder with a descriptive name and under a well-organized file system hierarchy. It is recommended to export to a folder that is as close to the root as possible.



When exporting deep hierarchy, the property which store the path for exported folder/files may exceed the maximum character supported by the property (typically 260 characters defined in the Windows API). To overcome such condition, it is recommended to export to a folder that is as close to the root as possible.

Starting in Windows 10, version 1607, MAX_PATH limitations have been removed from common Win32 file and directory functions. Please, refer information published by Microsoft from following link and consult with your system administrator to remove the limitation whenever possible.

<https://docs.microsoft.com/en-us/windows/win32/fileio/maximum-file-path-limitation?tabs=registry>

Click **Save** under **Export specification file** for saving export specification details as an XML file which can be used to run the exporter in command-line mode. See the section '**Command-line Export**' below for more details.

13. Click **Next**.



If the export folder already exists, a warning appears, informing you that the destination folder already exists and if you continue all existing information will be deleted.

Clicking **OK** confirms overwrite and clicking **Cancel** returns you to the Destination Folder screen to change the destination folder.

An Exporting screen appears with a progress bar and execution report, and the export process begins. During the export process, a **Pause** button is displayed. Users can manually pause and resume the export process (despite of scheduled pause/resume time) by clicking on **Pause/Resume** button.

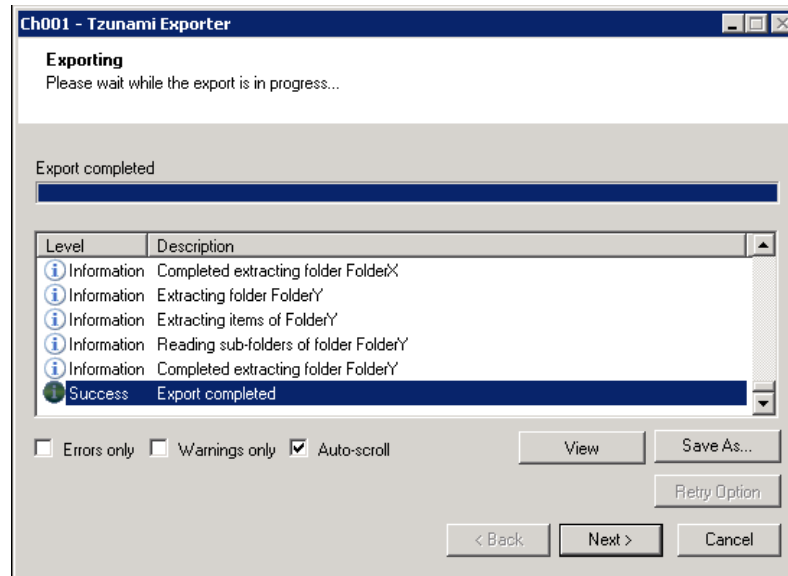


Figure 2-12: Exporter Progress Screen



You can save the export report by clicking **Save** as after export is complete.

You can check **Auto-scroll** to display the latest progress messages, as they appear.

You can display only export errors by checking **Errors only**.

You can display only export warnings by checking **Warnings only**.

14. Click **Retry Option**, if there are failed item(s).
15. Click **Next**. The Export Complete screen appears.
16. Click **Done**. The AquaLogic Export wizard is closed.

After the extraction process completes successfully, you are prompted to load the exported data into the current Tsunami Deployer project. Clicking '**Yes**' begins the process of loading the content from the previously exported TDX file into the project. For more information about loading sources, refer to the [Tsunami Deployer User Guide](#).

2.3 COMMAND-LINE EXPORT

Tsunami Exporter for AquaLogic provides ability to run export sessions non-interactively using command line instructions. This allows administrators to plan and schedule long running migration jobs through scripts, batch files and schedulers according to needs and organizational timetables. To run the exporter in batch mode you will need exporter specification file explained in the 'Choose Destination Folder' step of the export wizard. The file contains all the export option details including:

- Source ECM connectivity information (Server Address, User Name, Password etc.)

- Items to export
- Destination and Log Folder
- Filter
- Exporter specific options

This file can be edited to suit your needs however the XML schema of the file should not be altered. It is recommended that you generate a sample specifications file in the **Destination Folder Screen** selection step of the export wizard and use it as a template to create your own specification file.

Once the specification file is ready, you can run the exporter from command line using command:

TsunamiExporter.exe [-r <ResultFile>] -s <ExportSpecificationsFile>

Usage

Field	Description
-r	Outputs export results into an XML file [Optional]
-s	XML file containing export specifications

For example:

```
C:\User\Administrator> "C:\Program Files (x86)\Tsunami\Deployer 4.0\Exporters\AquaLogic
\TsunamiExporter.exe" -s "D:\Spec Files\specs1.xml"
```

```
C:\Program Files (x86)\Tsunami\Deployer 4.0\Exporters\AquaLogic> TsunamiExporter.exe -s
"D:\Spec Files\specs1.xml"
```

Based on your needs you can create number of specification files and use them to run multiple export sessions as batch commands.



You will need to provide absolute path for **TsunamiExporter.exe** and **ExportSpecificationsFile** in the command if you are not running from the exporter installation directory.

In Microsoft Windows Server 2003 environment, if USG (Universal Security Group) is enabled, Users with low privileges sometimes cannot export ECM contents. To export contents using command line, User must run with elevated or administrative privileges.

To export contents with elevated or administrative privileges, you can run the exporter from command line using command:

```
RUNAS /trustlevel: "Unrestricted" "<ExporterInstallationDirectory>\TsunamiExporter.exe"  
-s "<Spec file path>\Specfilename.xml" "
```

For example:

```
C:\> RUNAS /trustlevel:"Unrestricted" "C:\Program Files (x86)\Tsunami\Deployer  
4.0\Exporters\ AquaLogic \TsunamiExporter.exe " -s "D:\Spec Files\specs1.xml"
```

2.4 LOGGING SETTINGS

In Tsunami Exporter, log is written in a persistent medium having as much information as possible about events that occur while the software runs. That information plays a vital role while diagnosing if any issue occurs during the export process. Hence, it is worth mentioning that logger writes each and every details during.

Tsunami Inc provides the settings for writing logs. There are the following log levels that the user can change before running the tool.

1. Go to installation directory of the exporter and open **TsunamiExporter.exe.config** file in an editor.
2. Locate the key and set corresponding values as mentioned below:
 - **LogLevel:** Set the esteem to "Debug" or "High" or "Normal" or "low" or "none".

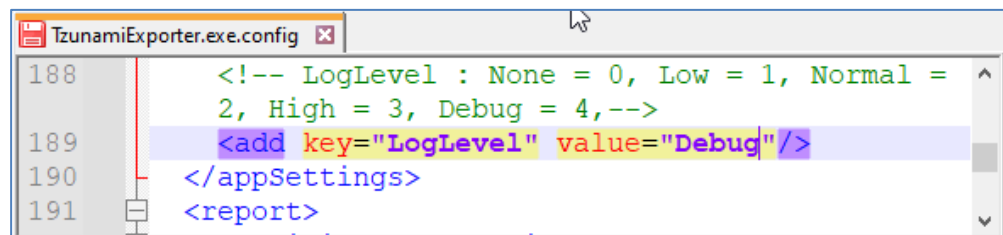


Figure 2-13 Log level Settings

- **Debug:** Writes logs as much as possible. So, this setting includes the maximum level of verbosity. By default, the tool is packaged with this setting.
 - **High:** Writes logs as much as possible for warnings and errors. However, it will not log possible diagnostic information.
 - **Normal:** Writes logs for anticipated errors and warnings.
 - **Low:** Critical errors are logged. There will be as low as possible information logged.
 - **None:** No such logs are written.
3. Save the file. Then run the exporter.

2.5 BEST PRACTICES

Due to the technological differences between AquaLogic and SharePoint, the following best practices should be taken into consideration:

- Migrate folders to their relative list types, based on the items in those folders:

Table 2-7: Target Structure Guidelines

AquaLogic Item Type	Relevant SharePoint Types
Projects/My Projects Projects/Archived Projects	<ul style="list-style-type: none">• Site Collection• Site
Project Documents	Documents inside Libraries
Task List	<ul style="list-style-type: none">• Tasks List• Folders inside Tasks Lists
Announcements	Announcements List
Calendars	Calendar List
Discussions	Discussion Board
Knowledge Folders	<ul style="list-style-type: none">• Document Library• Folders inside Document Libraries
Knowledge Documents	Documents inside a Document Library
Knowledge Links	<ul style="list-style-type: none">• Link inside a Links List.• Documents inside Document Libraries (with the Link to a Document Content Type)

- Knowledge Links can be migrated in two ways:
 - Migration as data-items in a Links List.
 - Migration as documents in a Document Library. MOSS/WSS3.0 provides a Content Type named Link to a Document, which functions in a similar way to a shortcut. For more information about migrating using this Content Type, please contact the Tsunami Support Team, at support@tsunami.com.

3 APPENDICES

3.1 APPENDIX A - AQUALOGIC 6.5 WITH SQL

Scenarios	Parameters	Notes
Portal, Collaboration, Publisher and Portal API service on the same machine	Mandatory: None	
[Local Collaboration, Publisher and Portal API service]	Optional: *CollabDBName *CollabDBHostName *PublisherDBHostName *PublisherDBVendor *PortalDBUser CollabDBUser LinkedDatabaseAlias CollabDocumentRepositoryPath PortalDocumentRepositoryPath PortalAPIServicePort PortalAPIServiceHostName PublisherURL PublisherDBName PublisherDBUserName	

Scenarios	Parameters	Notes
<p>Collaboration and/or Publisher on a machine other than the Portal machine. Portal API service host on the same machine as the portal.</p> <p>[Remote Collaboration and Publisher but local Portal API service]</p>	<p>Mandatory:</p> <ul style="list-style-type: none"> *CollabDBName *CollabDBHostName *PublisherDBHostName *PublisherDBVendor *PortalDBUser <p>CollabDBUser LinkedDatabaseAlias PublisherURL PublisherDBName PublisherDBUserName</p> <p>Optional:</p> <ul style="list-style-type: none"> CollabDocumentRepositoryPath PortalDocumentRepositoryPath PortalAPIServicePort PortalAPIServiceHostName 	<p>CollabDBName, CollabDBUser, LinkedDatabaseAlias are required only if Collaboration is installed and its content should be extracted.</p> <p>PublisherURL, PublisherDBName, PublisherDBUserName are required only if Publisher is installed and its content published to the Knowledge Directory should be extracted.</p>
<p>Collaboration and/or Publisher on machines other than the Portal machine. Portal API service also on a separate machine than the portal.</p> <p>[Remote Collaboration, Publisher and Portal API service]</p>	<p>Mandatory:</p> <ul style="list-style-type: none"> *CollabDBName *CollabDBHostName *PublisherDBHostName *PublisherDBVendor *PortalDBUser <p>CollabDBUser LinkedDatabaseAlias PortalAPIServicePort PortalAPIServiceHostName PublisherURL PublisherDBName PublisherDBUserName</p> <p>Optional:</p> <ul style="list-style-type: none"> CollabDocumentRepositoryPath PortalDocumentRepositoryPath 	<p>CollabDBName, CollabDBUser, LinkedDatabaseAlias are required only if Collab is installed and its content should be extracted.</p> <p>PublisherURL, PublisherDBName, PublisherDBUserName are required only if Publisher is installed and its content published to the Knowledge Directory should be extracted.</p>

*These parameters are not required in exporter configuration file (`TsunamiExporter.exe.config`) located in exporter installation folder, if user grants SELECT permissions on Collaboration and Publisher database manually as specified in Post Installation Step.

If parameter values are left blank, the exporter will try to auto-detect the settings from local Portal server. Remote components (Collaboration/Publisher etc.) will fail to be extracted in this case. These parameters have therefore been listed under mandatory parameters.

Export should work without optional parameters. However if there is an issue in export, these parameters can be configured for better results. For details on how to find the different parameters needed, please refer to the '`TsunamiExpoter.exe.config`' file in the exporter installation folder.

3.2 APPENDIX B - AQUALOGIC 6.5 WITH ORACLE

Scenarios	Parameters	Notes
Portal, Collaboration, Publisher and API Service on the same machine	Mandatory: None	
[Local Collaboration, Publisher and Portal API service]	Optional: *CollabDBName *PortalDBUser *PublisherDBVendor CollabDBUser LinkedDatabaseAlias CollabDocumentRepositoryPath PortalDocumentRepositoryPath PortalAPIServicePort PortalAPIServiceHostName PublisherURL PublisherDBName PublisherDBUserName	
Collaboration and/or Publisher on a machine other than the Portal machine. Portal API service host on the same machine as the portal.	Mandatory: *CollabDBName *PortalDBUser *PublisherDBVendor CollabDBUser LinkedDatabaseAlias PublisherURL PublisherDBUserName	CollabDBUser, LinkedDatabaseAlias are required only if Collaboration is installed and its content should be extracted. PublisherURL, PublisherDBUserName are required only if Publisher is installed and its content published to the Knowledge Directory should be extracted.
[Remote Collaboration and Publisher but local Portal API service]	Optional: CollabDBName PublisherDBName CollabDocumentRepositoryPath PortalDocumentRepositoryPath PortalAPIServicePort PortalAPIServiceHostName	
Collaboration and/or Publisher on machines other than the Portal machine. Portal API service host also on a separate machine than the portal.	Mandatory: *CollabDBName *PortalDBUser *PublisherDBVendor PortalAPIServicePort PortalAPIServiceHostName PublisherURL PublisherDBUserName	CollabDBUser, LinkedDatabaseAlias are required only if Collaboration is installed and its content should be extracted. PublisherURL, PublisherDBUserName are required only if Publisher is installed and its content published to the Knowledge Directory should be extracted.
[Remote Collaboration, Publisher and Portal API service]	Optional: PublisherDBName LinkedDatabaseAlias CollabDocumentRepositoryPath PortalDocumentRepositoryPath	

*These parameters are not required in exporter configuration file (`TsunamiExporter.exe.config`) located in exporter installation folder, if user grants SELECT permissions on Collaboration and Publisher database manually as specified in Post Installation Step.

If parameter values are left blank, the exporter will try to auto-detect the settings from local Portal server. Remote components (Collaboration/Publisher etc.) will fail to be extracted in this case. These parameters have therefore been listed under mandatory parameters.

Export should work without optional parameters. However if there is an issue in export, these parameters can be configured for better results. For details on how to find the different parameters needed, please refer to the '`TsunamiExpoter.exe.config`' file in the exporter installation folder.

3.3 APPENDIX C - AQUALOGIC 6 WITH SQL

Scenarios	Parameters	Notes
Portal, Collaboration, Publisher and Portal API service on the same machine	Mandatory: None	
[Local Collaboration, Publisher and Portal API service]	Optional: *CollabDBName *CollabDBHostName *PublisherDBHostName *PublisherDBVendor *PortalDBUser CollabDBUser LinkedDatabaseAlias CollabDocumentRepositoryPath PortalDocumentRepositoryPath PortalAPIServicePort PortalAPIServiceHostName PublisherURL PublisherDBName PublisherDBUserName	
Collaboration and/or Publisher on a machine other than the Portal machine. Portal API service host on the same machine as the portal.	Mandatory: *CollabDBName *CollabDBHostName *PublisherDBHostName *PublisherDBVendor *PortalDBUser CollabDBUser LinkedDatabaseAlias PublisherURL PublisherDBName PublisherDBUserName	CollabDBName, CollabDBUser, LinkedDatabaseAlias are required only if Collaboration is installed and its content should be extracted. PublisherURL, PublisherDBName PublisherDBUserName are required only if Publisher is installed and its content published to the Knowledge Directory should be extracted.
[Remote Collaboration and Publisher but local Portal API service]	Optional: CollabDocumentRepositoryPath PortalDocumentRepositoryPath PortalAPIServicePort PortalAPIServiceHostName	

Scenarios	Parameters	Notes
Collaboration and/or Publisher on machines other than the Portal machine. Portal API service also on a separate machine than the portal.	Mandatory: *CollabDBName *CollabDBHostName *PublisherDBHostName *PublisherDBVendor *PortalDBUser CollabDBUser LinkedDatabaseAlias PortalAPIServicePort PortalAPIServiceHostName PublisherURL PublisherDBName PublisherDBUserName	CollabDBName, CollabDBUser, LinkedDatabaseAlias are required only if Collab is installed and its content should be extracted. PublisherURL, PublisherDBName, PublisherDBUserName are required only if Publisher is installed and its content published to the Knowledge Directory should be extracted.
[Remote Collaboration, Publisher and Portal API service]	Optional: CollabDocumentRepositoryPath PortalDocumentRepositoryPath	

*These parameters are not required in exporter configuration file (`TsunamiExporter.exe.config`) located in exporter installation folder, if user grants SELECT permissions on Collaboration and Publisher database manually as specified in Post Installation Step.

If parameter values are left blank, the exporter will try to auto-detect the settings from local Portal server. Remote components (Collaboration/Publisher etc.) will fail to be extracted in this case. These parameters have therefore been listed under mandatory parameters.

Export should work without optional parameters. However if there is an issue in export, these parameters can be configured for better results. For details on how to find the different parameters needed, please refer to the '`TsunamiExpoter.exe.config`' file in the exporter installation folder.

3.4 APPENDIX D - AQUALOGIC 6 WITH ORACLE

Scenarios	Parameters	Notes
Portal, Collaboration, Publisher and API Service on the same machine	Mandatory: None	
[Local Collaboration, Publisher and Portal API service]	Optional: *CollabDBName *PortalDBUser *PublisherDBVendor CollabDBUser LinkedDatabaseAlias CollabDocumentRepositoryPath PortalDocumentRepositoryPath PortalAPIServicePort PortalAPIServiceHostName PublisherURL PublisherDBName PublisherDBUserName	
Collaboration and/or Publisher on a machine other than the Portal machine. Portal API service host on the same machine as the portal.	Mandatory: *CollabDBName *PortalDBUser *PublisherDBVendor CollabDBUser LinkedDatabaseAlias PublisherURL PublisherDBUserName	CollabDBUser, LinkedDatabaseAlias are required only if Collaboration is installed and its content should be extracted. PublisherURL, PublisherDBUserName are required only if Publisher is installed and its content published to the Knowledge Directory should be extracted.
[Remote Collaboration and Publisher but local Portal API service]	Optional: CollabDBName PublisherDBName CollabDocumentRepositoryPath PortalDocumentRepositoryPath PortalAPIServicePort PortalAPIServiceHostName	
Collaboration and/or Publisher on machines other than the Portal machine. Portal API service host also on a separate machine than the portal.	Mandatory: *CollabDBName *PortalDBUser *PublisherDBVendor PortalAPIServicePort PortalAPIServiceHostName PublisherURL PublisherDBUserName	CollabDBUser, LinkedDatabaseAlias are required only if Collaboration is installed and its content should be extracted. PublisherURL, PublisherDBUserName are required only if Publisher is installed and its content published to the Knowledge Directory should be extracted.
[Remote Collaboration, Publisher and Portal API service]	Optional: PublisherDBName LinkedDatabaseAlias CollabDocumentRepositoryPath PortalDocumentRepositoryPath	

*These parameters are not required in exporter configuration file (`TsunamiExporter.exe.config`) located in exporter installation folder, if user grants SELECT permissions on Collaboration and Publisher database manually as specified in Post Installation Step.

If parameter values are left blank, the exporter will try to auto-detect the settings from local Portal server. Remote components (Collaboration/Publisher etc.) will fail to be extracted in this case. These parameters have therefore been listed under mandatory parameters.

Export should work without optional parameters. However if there is an issue in export, these parameters can be configured for better results. For details on how to find the different parameters needed, please refer to the '`TsunamiExpoter.exe.config`' file in the exporter installation folder.

3.5 APPENDIX E - AQUALOGIC 5 WITH SQL

Scenarios	Parameters	Notes
<p>Portal, Collaboration, Publisher and Portal API service on the same machine</p> <p>[Local Collaboration, Publisher and Portal API service]</p>	<p>Mandatory:</p> <p>None</p> <p>Optional:</p> <p>CollabDBName CollabDBUser LinkedDatabaseAlias CollabDocumentRepositoryPath PortalDocumentRepositoryPath PortalAPIServiceHostName PortalDBHostName PublisherURL PublisherDBName PublisherDBUserName PortalDBName PortalDBUser CollabDBHostName PublisherDBHostName PublisherDBVendor</p>	
<p>Collaboration and/or Publisher on a machine other than the Portal machine. Portal API service host on the same machine as the portal.</p> <p>[Remote Collaboration and Publisher but local Portal API service]</p>	<p>Mandatory:</p> <p>CollabDBName CollabDBUser LinkedDatabaseAlias PublisherURL PublisherDBName PublisherDBUserName CollabDBHostName PublisherDBHostName PublisherDBVendor</p> <p>Optional:</p> <p>CollabDocumentRepositoryPath PortalDocumentRepositoryPath PortalAPIServicePort PortalDBHostName PortalDBName PortalDBUser</p>	<p>CollabDBName, CollabDBUser, LinkedDatabaseAlias, CollabDBHostName are required only if Collaboration is installed and its content should be extracted.</p> <p>PublisherURL, PublisherDBName, PublisherDBUserName, PublisherDBHostName, PublisherDBVendor are required only if Publisher is installed and its content published to the Knowledge Directory should be extracted.]</p>

<p>Collaboration and/or Publisher on machines other than the Portal machine. Portal API service also on a separate machine than the portal.</p> <p>[Remote Collaboration, Publisher and Portal API service]</p>	<p>Mandatory:</p> <p>PublisherURL PublisherDBName PublisherDBUserName CollabDBHostName PublisherDBHostName PublisherDBVendor</p> <p>Optional:</p> <p>PortalDBUser</p>	<p>CollabDBName, CollabDBUser, LinkedDatabaseAlias, CollabDBHostName are required only if Collaboration is installed and its content should be extracted.</p> <p>PublisherURL, PublisherDBName, PublisherDBUserName, PublisherDBHostName, PublisherDBVendor are required only if Publisher is installed and its content published to the Knowledge Directory should be extracted.</p>
---	--	---

If parameter values are left blank, the exporter will try to auto-detect the settings from local portal server. Remote components (Collaboration/Publisher etc.) will fail to be extracted in this case. These parameters have therefore been listed under mandatory parameters.

Export should work without optional parameters. However if there is an issue in export, these parameters can be configured for better results. For details on how to find the different parameters needed, please refer to the 'TsunamiExpoter.exe.config' file in the exporter installation folder.

3.6 APPENDIX F - AQUALOGIC 5 WITH ORACLE

Scenarios	Parameters	Notes
Portal, Collaboration, Publisher and Portal API service on the same machine	Mandatory: None Optional: CollabDBName CollabDBUser	
[Local Collaboration, Publisher and Portal API service]	LinkedDatabaseAlias CollabDocumentRepositoryPath PortalDocumentRepositoryPath PortalAPIServiceHostName PortalDBHostName PublisherURL PublisherDBName PublisherDBUserName PortalDBName PortalDBUser CollabDBHostName PublisherDBHostName PublisherDBVendor	
Collaboration and/or Publisher on a machine other than the Portal machine. Portal API service host on the same machine as the portal.	Mandatory: CollabDBName CollabDBUser LinkedDatabaseAlias PublisherURL PublisherDBName PublisherDBUserName PublisherDBVendor	CollabDBName, CollabDBUser, LinkedDatabaseAlias are required only if Collaboration is installed and its content should be extracted. PublisherURL, PublisherDBName, PublisherDBUserName, PublisherDBVendor are required only if Publisher is installed and its content published to the Knowledge Directory should be extracted.
[Remote Collaboration and Publisher but local Portal API service]	Optional: CollabDocumentRepositoryPath PortalDocumentRepositoryPath PortalAPIServicePort PortalAPIServiceHostName PortalDBHostName PortalDBName PortalDBUser CollabDBHostName PublisherDBHostName	

Scenarios	Parameters	Notes
Collaboration and/or Publisher on machines other than the Portal machine. Portal API service also on a separate machine than the portal.	Mandatory: CollabDBName CollabDBUser LinkedDatabaseAlias PortalAPIServiceHostName PublisherURL PublisherDBName PublisherDBUserName PublisherDBVendor Optional: CollabDocumentRepositoryPath PortalDocumentRepositoryPath PortalDBHostName PortalDBName PortalDBUser CollabDBHostName PublisherDBHostName	CollabDBName, CollabDBUser, LinkedDatabaseAlias are required only if Collaboration is installed and its content should be extracted. PublisherURL PublisherDBName PublisherDBUserName, PublisherDBVendor are required only if Publisher is installed and its content published to the Knowledge Directory should be extracted.
[Remote Collaboration, Publisher and Portal API service]		

If parameter values are left blank, the exporter will try to auto-detect the settings from local portal server. Remote components (Collaboration/Publisher etc.) will fail to be extracted in this case. These parameters have therefore been listed under mandatory parameters.

Export should work without optional parameters. However if there is an issue in export, these parameters can be configured for better results. For details on how to find the different parameters needed, please refer to the 'TsunamiExpoter.exe.config' file in the exporter installation folder.

4 COPYRIGHT AND TRADEMARK

© Copyright 2024. Tsunami Inc. All rights reserved.

All intellectual property rights in this publication are owned by Tsunami, Inc. and protected by United States copyright laws, other applicable copyright laws and international treaty provisions. Tsunami, Inc. retains all rights not expressly granted. No part of this publication may be reproduced in any form whatsoever or used to make any derivative work without prior written approval by Tsunami, Inc.

No representation of warranties for fitness for any purpose other than what is specifically stated in this guide is made either by Tsunami, Inc. or by its agents.

Tsunami, Inc. reserves the right to revise this publication, and/or make improvements or changes in the product(s) and/or the program(s) described in this documentation at any time without prior notice.

Any software on removable media described in this publication is furnished under a license agreement included with the product as a separate document. If you are unable to locate a copy, please contact Tsunami, Inc. and a copy will be forwarded to you.

Tsunami is either a registered trademark or a trademark of Tsunami, Inc. in the United States and/or other countries.

All other brand or product names are trademarks or registered trademarks of their respective companies.

For further information, you can contact Tsunami Inc. at:

Tsunami Inc.

601 108th Avenue, NE

Suite 1900

Bellevue, WA 98004, USA

Email: sales@tsunami.com, support@tsunami.com

Web: <http://www.tsunami.com>